

Basalt^{1:1}

Formerly known as **Rondite and Hemilite**. Updated September 2004

50W, 70W HPS-E E27	80W MBF E27	IP54 EN 60598		20 joules	
------------------------	-----------------	-----------------	--	-----------	--

Complementary, unobtrusive bollards with high vandal resistance.

- Choice of two heads: Basalt R gently curving top with steps running around the head. Basalt H distinct hemispherical head shape
- Vandal resistant aluminium castings and polycarbonate visor
- Head retained by recessed tamper-resistant bolt
- Low glare at normal viewing angles

Materials/Finish

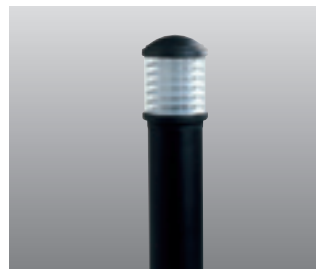
Body: Heavy duty extruded LM6 aluminium.
 Head: Heavy duty, thick LM6 aluminium castings.
 Optics: Anodised high purity aluminium concentric louvres protected by UV stabilised polycarbonate sleeve.
 Paint finish: Powder coating in black.
 Retaining bolt: Small triangular headed bolt in recess, supplied with special key.
 Gear tray: Zinc plated steel.

Installation/Mounting

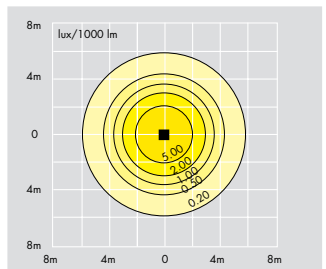
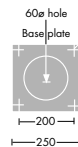
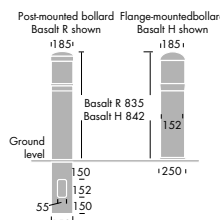
Standard version is root mounted and has an underground cable entry slot. Termination bar has provision for looping of SWA cable and includes an earthing point. Gear tray has plug and socket connection. Lamp and head unit secured by triangular headed tamper-resistant bolt. 250mm flange plate version fixes via four 15mm Ø holes at 200mm centres. 60mm Ø central hole for wiring.

Specification

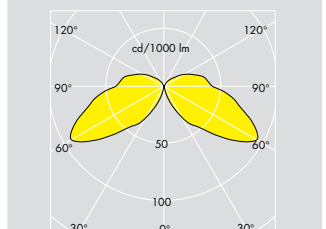
To specify state:
 Circular section bollard of high vandal resistance with polycarbonate sleeves covering high purity anodised aluminium louvre optical system. Material to be LM6 aluminium alloy. To have a single triangular tamper resistant bolt for access to lamp and gear. Sealed to IP54. As Thorn Basalt R/H.



Basalt R



Cat. No. BOLR + BOLGTNB1070.4
 Mounting height: 0.70m



Cat. No. BOLH + BOLGTNB1070.4
 Lamp: 70W HPS-E
 DLOR: 0.37 LOR: 0.51

Ordering Guide

Lamps to be ordered separately.

Lamp type & rating	Description	Weight (kg)	Cat. No.
HPS-E 50W	Bollard gear tray	1.81	BOLGTNB1050.4
HPS-E 70W	Bollard gear tray	1.95	BOLGTNB1070.4
MBF 80W	Bollard gear tray	1.83	BOLGTB1080.4
	Basalt R bollard, root mounted	7.25	BOLR
	Basalt R bollard, flange mounted	6.40	BOLRFP
	Basalt H bollard, root mounted	7.75	BOLH
	Basalt H bollard, flange mounted	6.90	BOLHFP

Note: To specify complete fitting select bollard & gear tray. All bollards supplied with key. Export voltages available, refer to page 553 for details.