



Heritage Lighting
by DW Windsor.



Contents

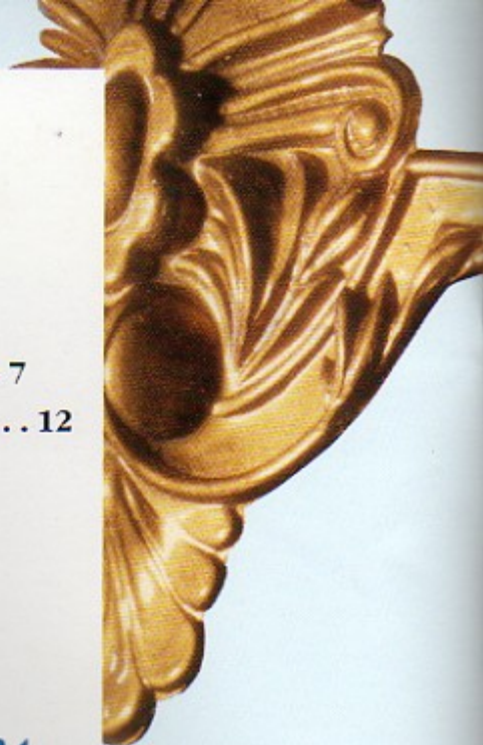
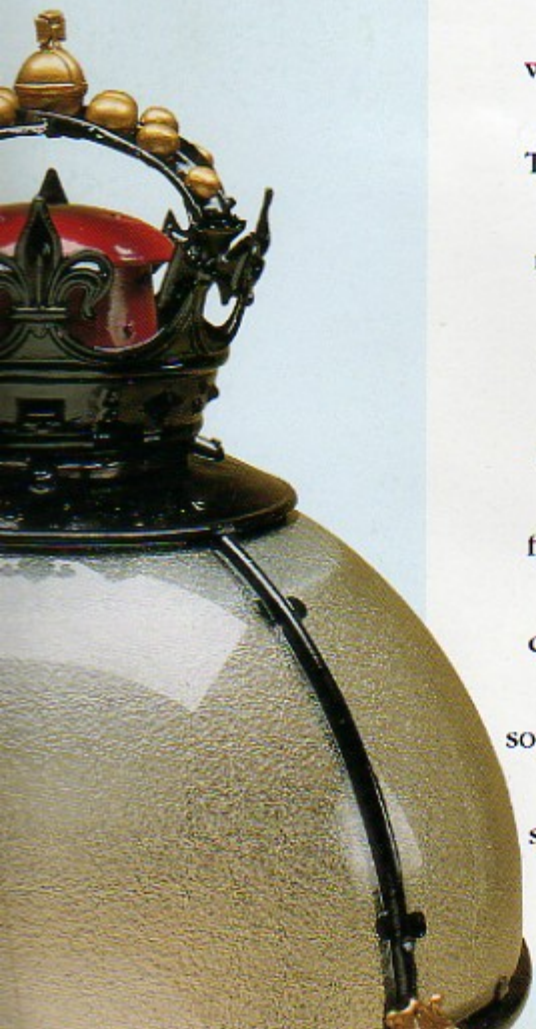
Lantern Styles . . .	2
Road Lighting . . .	6
A Whole Range of Applications . . .	7
Special Designs & Restoration Work . . .	12
Practical Data . . .	13
Mounting Options . . .	16
Street Furniture . . .	21

A style to suit your location

D W Windsor offer the widest available choice of heritage-style road and amenity lighting.

An extensive range of complementary posts, pedestals and brackets will give a combination that is exactly right for any location.

This brochure is designed to help you select the ideal lantern and mounting, with each style illustrated both in close-up detail and in a typical location. At the end of the lighting section there are three pages of technical data, briefly explaining lantern sizes, finishes and light sources. At the back of the brochure, the specifying chart sets out viable combinations of lanterns, mountings and light sources. If you require further technical information and full specification on any products, please contact D W Windsor's sales staff.





The elegance of Regent Street, Cheltenham, called for the installation of Windsor Street lanterns on Oxford lamp posts.



Suspended special Knightsbridge lanterns were specified for this refurbished arcade in Tunbridge Wells.
Courtesy of Speybawk Land and Estates Ltd.



The exclusive quality of this Kenilworth estate was enhanced by Windsor Street lanterns on Oxford lamp posts.
Courtesy of Bovis Homes.



Westminster lanterns on Gloucester lamp posts brighten the gardens of the Wheelwright Arms Public House at Goffs Oak.



Windsor Terrace lanterns are attractive features in gardens by day and night, also improving security.



Illuminated bollards are ideal for low-level lighting in pedestrian areas.
Courtesy of Royco plc.

Lantern Styles



Windsor



Lancaster

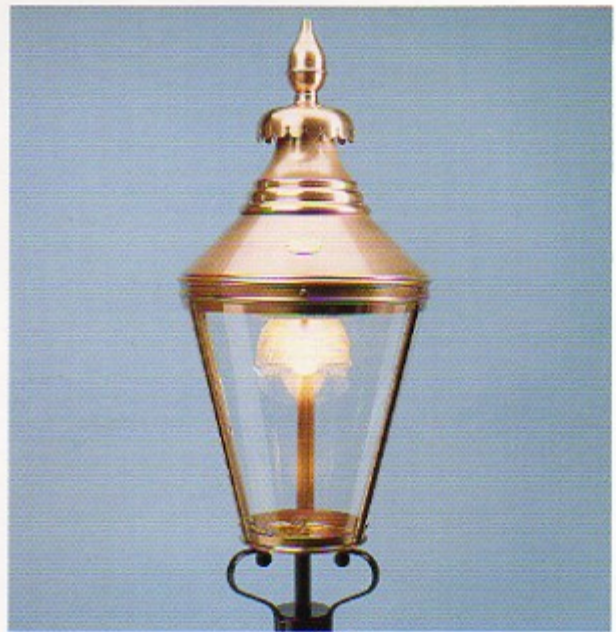


Strand (IP54)

The next few pages show the full range of lantern styles. They are available in various sizes and finishes, with a wide choice of lamp types and mounting options. Please see the specifying chart for full details.



Westminster



Pall Mall



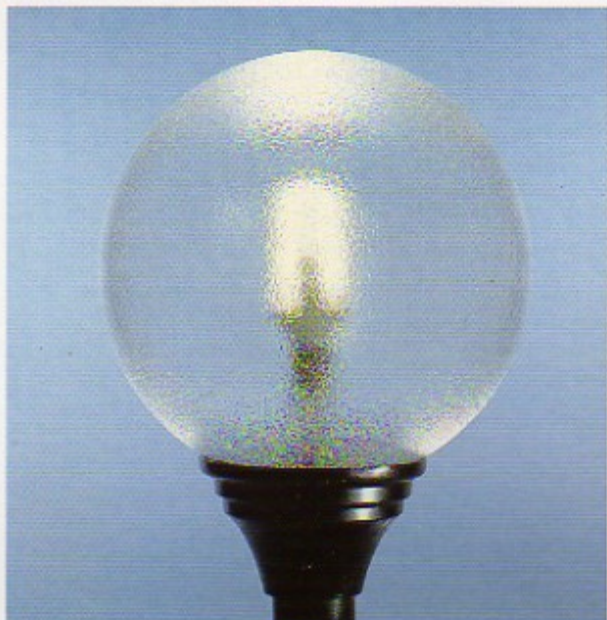
Berkeley



Knightsbridge



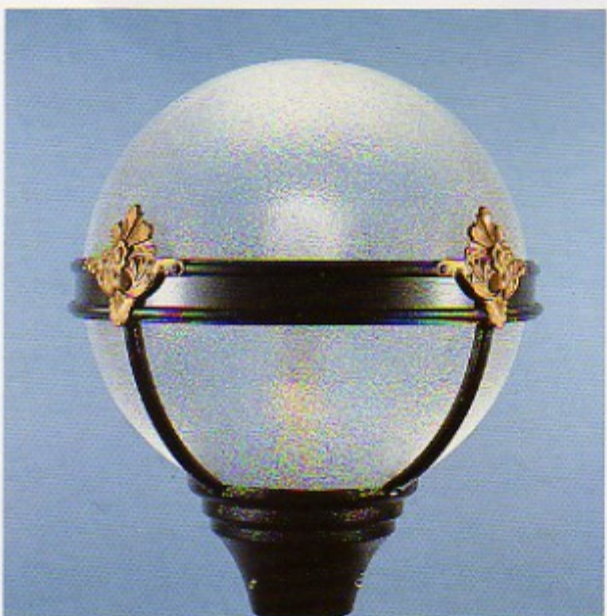
Portland



Brighton



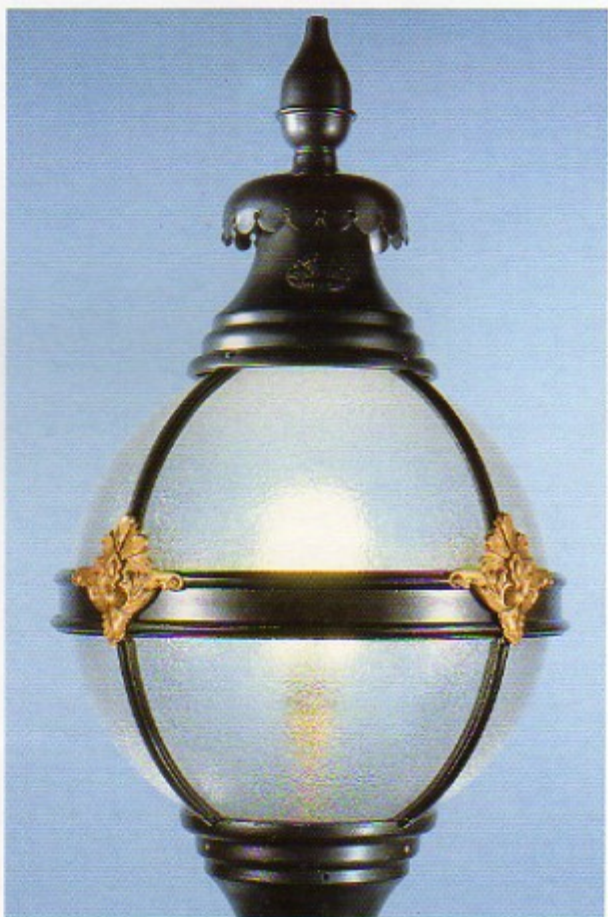
Highbeam globe



Kingston



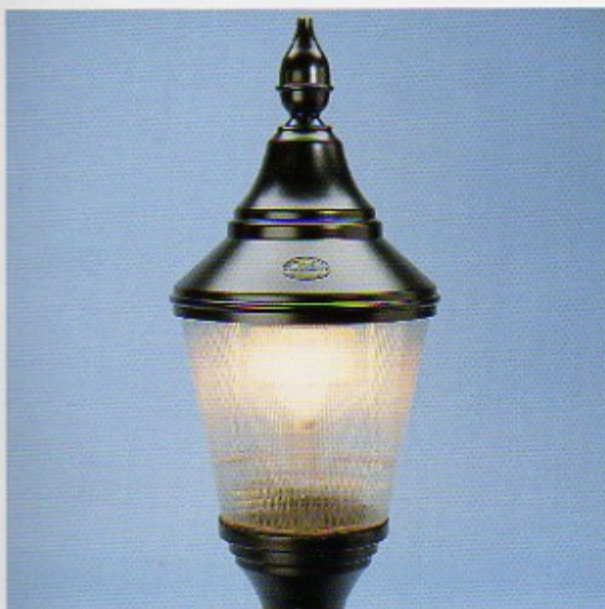
Richmond



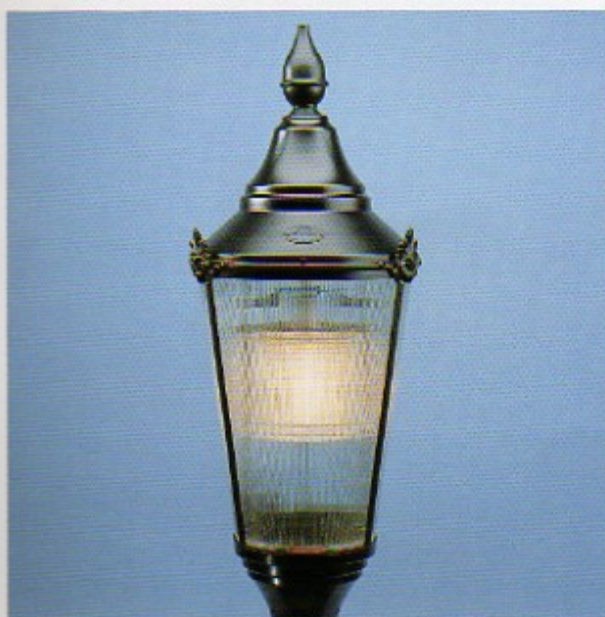
Victoria



Warwick long (IP64)



York short plain (IP64)



York long ornate (IP64)



Burlington



Paddington

Pimlico

Road Lighting

Effective road lighting is ever more important in our towns and cities; ideally it is aesthetically pleasing as well as functional. Here are some examples of how DW Windsor products have been used to reconcile the needs for high standards of lighting and environmental enhancement.



The reconstruction of Old York Road in the London Borough of Wandsworth included the installation of Strand B lanterns on Edinburgh columns.



DW Windsor lanterns on Oxford lamp posts line a road through a park.



Westminster Boulevard lanterns have been mounted on original pedestals in Wallingford.
Courtesy of Oxford County Council.



The Victorian architecture of this group of buildings in Castle Road, Nottingham, is emphasised by the double-arm mounted Richmond globes on Oxford lamp posts.
Courtesy of Nottingham City Council.

The larger sizes of almost all lanterns can be used for road lighting, using the large columns and in some cases, wall brackets. Mounting heights along traffic routes are usually 8 or 10 metres, with heights of 4–6 metres along subsidiary roads.



Windsor lanterns on wall brackets illuminate a street in Oxford, where lamp posts would be intrusive.
Courtesy of Oxford County Council.

A Whole Range of Applications

Housing Developments

In an increasingly competitive market, many developers are looking for cost-effective ways to add value to their properties. Elegant heritage-style lighting by DW Windsor can lift the development into a higher market bracket, bringing benefits far higher than the actual cost involved. A DW Windsor installation can meet local authority requirements in terms of lighting performance, controls, economy, vandal resistance and ease of maintenance.



Pall Mall lanterns were chosen to complement this development by Robert Hitchens Homes.

Arcades and Shopping Malls



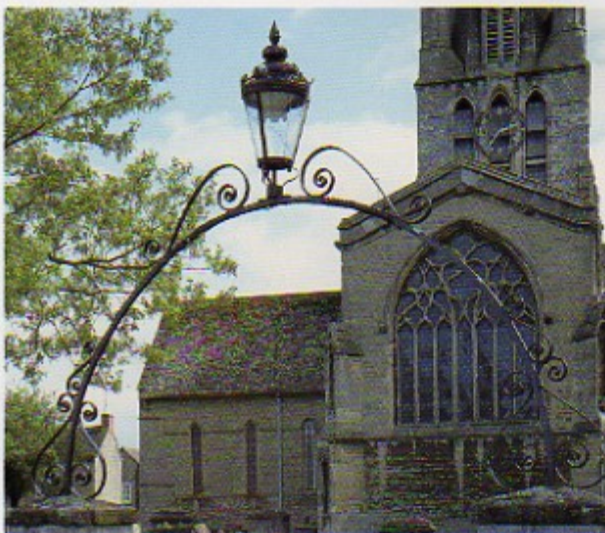
A special installation for the Luton Arndale Centre.

DW Windsor lanterns are an excellent choice for retail centres, whether traditional or modern.



Burlington lanterns ideally match the style and proportions of The Arcade in Bristol.

Churches



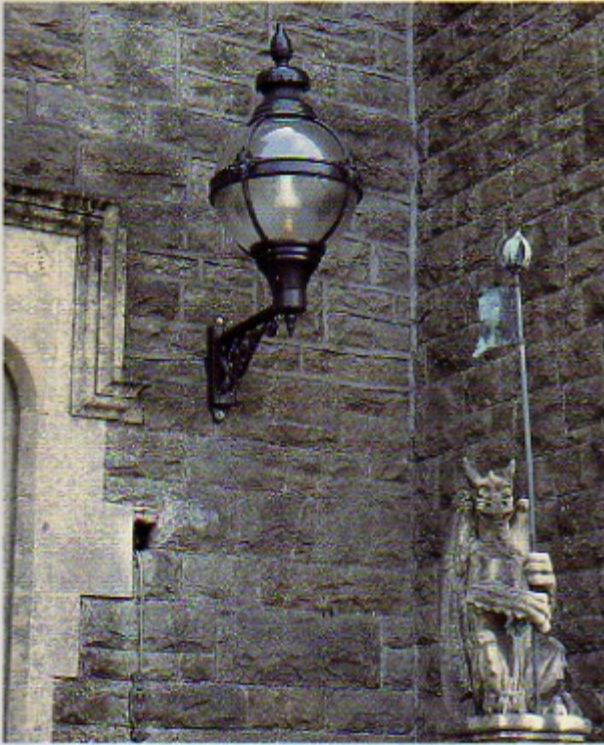
Westminster lantern at Witney Church, Oxfordshire.

A DW Windsor installation will blend harmoniously with the dignified surroundings of a church or cathedral.

Norwich, Exeter, Salisbury, Winchester and Birmingham cathedrals have all used DW Windsor products to light their surrounds.

Historic Buildings

Commercial or security interests can conflict with the need to preserve the character of a fine period building. DW Windsor's superb reproductions solve the problem of conserving the historic atmosphere.



The ancient stones of Miskin Manor, mid-Glamorgan, are illuminated by Victoria globes.



A screen-printed Windsor Court lantern on an ornate wall bracket at a doctor's surgery in Hertford.

Inns and Restaurants

DW Windsor products are often used to emphasise the visual features of inns and restaurants, and to extend the commercial usefulness of garden areas.



The Three Horseshoes Public House at Hooks Cross, Hertfordshire has a patio lit by Westminster Garden lanterns with opal glazing, on Lincoln pedestals.



McMullens brewery commissioned Paddington lanterns with specially screen-printed glazing.

Commercial Buildings

DW Windsor lighting provides a welcoming and secure environment, and whatever the setting, it will add character.

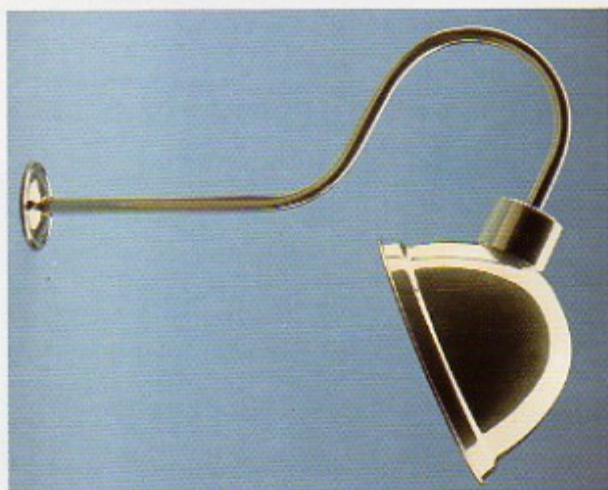


DW Windsor's products are equally suitable for new buildings. At Melvyn Rutter's Morgan garage near Little Hallingbury, specially adapted Lincoln columns have been imaginatively used as pillars.

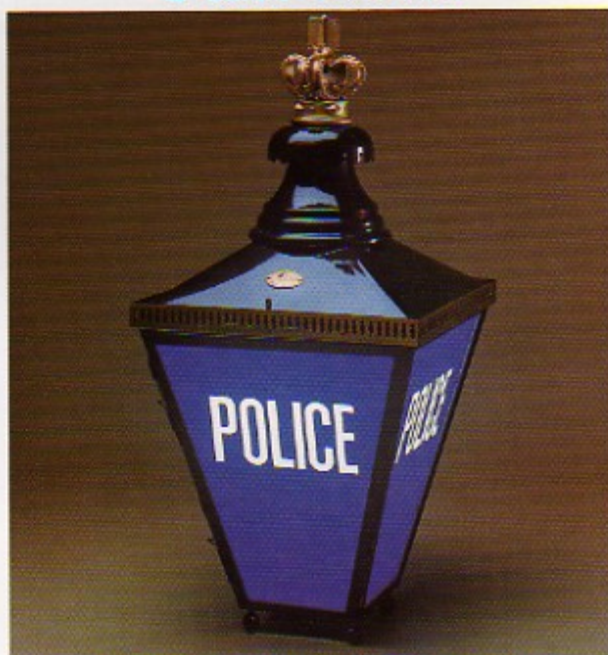


At The Chantry, Bishop's Stortford, the colour theme of green has been followed through on the Worcester lamp posts and small ornate pendant wall brackets which support Westminster lanterns.

Police Stations



Cowl lights are an elegant means of illuminating sign boards.



The classic "blue lamp" is back in demand from many police authorities.

Railway Stations

A Victorian railway station can keep its character when lighting styles of the period are incorporated in the restoration.



Windsor and Eton Central Station is also home to the Royalty and Empire tableaux. They have used Windsor lanterns on Oxford lamp posts with double-arm brackets for a very impressive effect.

Parks and Gardens

Any park or garden setting can be enhanced by installing DW Windsor lighting, which also adds to the security.



The tranquil surroundings of Haberdasher's Aske School have been lit with Pall Mall Avenue lanterns on Worcester lamp posts.



A Windsor Terrace lantern on a Wells lamp post is perfectly proportioned for a garden setting.

Special Designs and Restoration Work

The choice at DW Windsor does not end at their standard range. Because every piece is built by hand, rather than on mass production lines, skills are retained which enable them to produce special designs to order. Unusual locations sometimes demand specific sizes, proportions or ornamentation; the designers and craftsmen at DW Windsor welcome such challenges and will be

glad to submit quotations for special requirements.

Original lanterns can be restored to their former glory at DW Windsor, with new lighting and control equipment. Antique lamp posts will be shot blasted to remove old paint, ready for renewal. If for any reason it is impractical to refurbish a lantern, authentic reproductions can be made, retaining all the details of the original.



The original Edwardian lanterns from Imperial College – before and after restoration by DW Windsor.



A special variant on the Westminster lantern, with ornamental crown.



DW Windsor's skills are by no means restricted to reproducing antiques. They are equally at home with modern styling, as can be seen from these globes and pedestals made for the London Bridge City development.

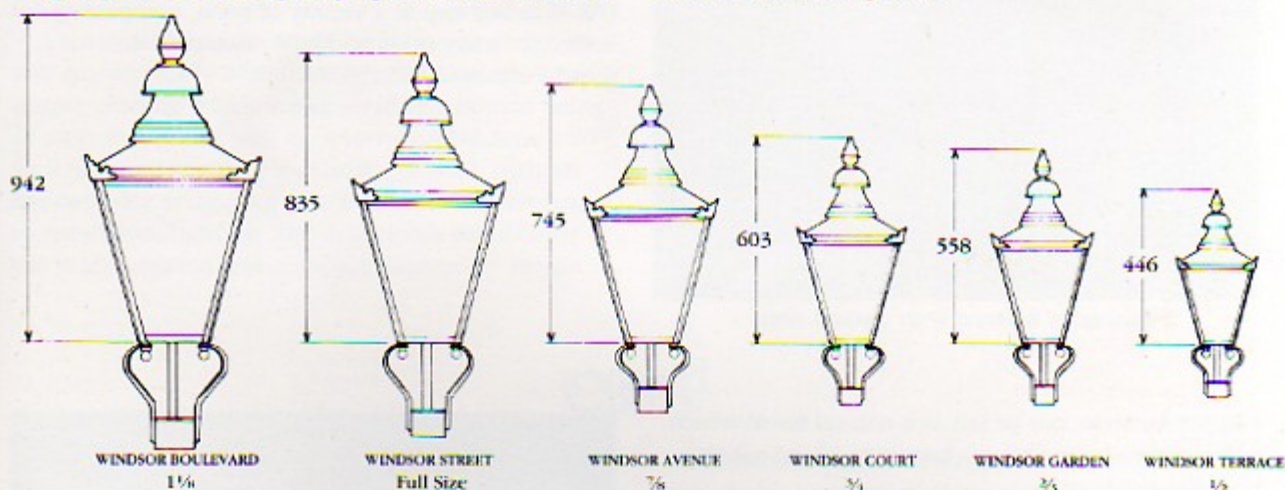
Practical Data

The suitability of a lantern for a particular location depends on the lantern size, light source and mounting height.

Sizing

"Full Size" refers to the standard size of lanterns used at a 4m or 5m mounting height. The Windsor Street lantern is approximately 40cm across at the top. Use of the other sizes is related to the mounting height; please see the specifying chart at the back of

this brochure for full details of appropriate sizes at varying heights. The table below shows the Windsor lantern in its full range of sizes. Many other lantern styles are also offered in these sizes; the specifying chart defines the options.



Light Sources

Typical applications

Location

Gardens, patios etc.

Driveways and minor roads

Major roads

Lamp Type

Tungsten filament (GLS)
Compact fluorescent (SL)

High pressure mercury (MBF)
High pressure sodium (SON)

High pressure sodium (SON)
Low pressure sodium (SOX)

Please refer to the specifying chart to see which light sources are appropriate in different sizes and styles of lantern. Other lamp types may also be available if required.

Photo-electric cells, which automatically control the switching, are available on most styles. Passive infra-red movement detectors, suitable for use with tungsten or compact fluorescent lamps, can be discreetly mounted beneath the lanterns to provide security lighting.

Optical Controls

The DW Windsor Standard Refractor improves the distribution of light consistent with the need for glare control, and is fitted as standard on most of the larger lanterns.

For extra high performance DW Windsor have developed the Highbeam Refractor* with the aid of an Arts Council grant. The lens of this unique, computer-designed glass refractor has a complex faceted combination, to be used with a light source of up to 100W SON-E. Its superior light distribution allows greatly increased spacing between columns, giving significant cost savings on larger lighting schemes.



Highbeam refractor*

* Registered Design.

Optical Controls



Lancaster lantern with optical unit.

Advanced optical units, such as the one illustrated, are designed for maximum light efficiency. The reflectors are long-life coated for protection, made with high-purity aluminium or metallised engineering plastic.

Fitting these units gives benefits in terms of increased efficiency and glare control, and possible cost savings in that lower wattage lamps may be used, or spacings increased.

DW Windsor can fit a variety of units, compatible with light sources up to 250W, to satisfy the requirements of BS5489.

Finishes

Copper lanterns can be left in a natural finish which will weather to an antique brown to blend subtly with the surroundings.

Alternatively, they can be polished and stove lacquered to preserve the bright finish, or supplied in black stove enamel.

Aluminium lanterns and globes are supplied in black polyester powder-coated finish as standard.

All lanterns can be supplied in any BS or RAL colour if required.



Detail of a weathered copper lantern.

Computer Design Service

Most of the high performance units have their photometric data logged in a computer programme, to enable DW Windsor's technical staff to work out a lighting design exactly to the customer's needs. Several different lighting configurations can be

evaluated, to work out the best possible solution.

The company has also invested in a computer-aided design system, which is being developed to offer the customer a faster and more efficient service.

Maintenance

All DW Windsor styles are designed with ease of maintenance in mind.

On the Windsor Street lanterns a rigidly built frame has a robust hinged access door for lamp changing. The glazing is held firmly in place with special tabs and further sealed against dust with permanently elastic glazing strips.

The Strand lantern, when fitted with certain optical units, offers total protection against dust and water ingress. The optical compartments and the lantern glazing are sealed for their entire life,

thereby eliminating all need for internal cleaning.

On the Victoria and Richmond globes, the decorative metalwork and polycarbonate glazing lift off as a one-piece unit for lamp changing.

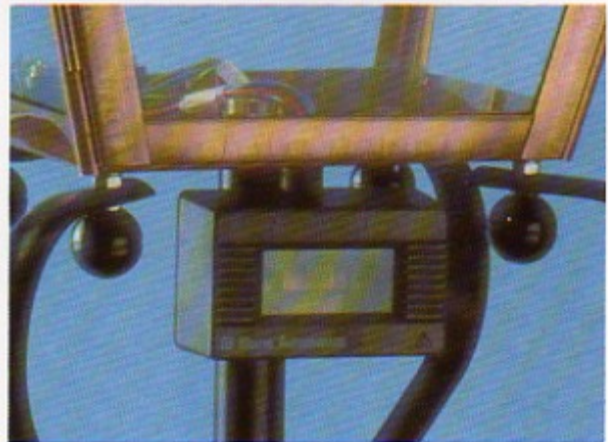
Certain of the lanterns have been tested by an independent NAMAS laboratory, and have been certificated as passing the requirements for BS5490:1977. As examples, the York/Warwick range achieved IP64 (Category 1), while the Strand range was awarded IP54 (Category 1).

Security

Recent studies show a direct link between increased lighting levels and decreased crime rates. This is particularly important when planning the regeneration of inner cities and developing new housing estates; as well as living in a pleasant environment during daylight hours, residents must feel confident and secure after dark. A DW Windsor installation will provide a high standard of lighting without intruding visually into the setting it safeguards.

A lantern fitted with a passive infra-red detector will automatically illuminate when it senses a heat source coming within range – either a human being or a car engine. As well as deterring intruders, it will welcome and reassure legitimate visitors, without the complex setting-up of active infra-red sensors, or harsh floodlighting. The detector is suitable for use with tungsten and compact fluorescent lamps.

DW Windsor lanterns are built to keep vandals at bay with tough polycarbonate glazing panels fitted to many styles as an option.



Quality

Quality and craftsmanship of the highest calibre are apparent throughout in the way in which traditional skills are combined with modern technology. DW Windsor build their products to last for many years, with the same high standards that were employed in making lanterns of a century ago, many of which are still in use today.

DW Windsor lanterns have several features which exemplify their lasting quality, and which the company believes put them in a class apart from their competitors:

- Hand finished for immaculate appearance.
- Rigid structure for robustness.
- Lanterns with frogs have cable shrouded in conduit for electrical safety.
- Certain of the lanterns have ingress protection ratings of 54 and 64 for guaranteed weather resistance.

Continuous quality control is implemented through the production cycle, with batch testing of electrical components, to ensure the highest standards are maintained.

The individually numbered plate on each DW Windsor lantern is a record of its creator, build specification and date. This is a characteristic touch that tells a great deal about the company and its philosophy. The quality statement is carried all through the DW Windsor product range, from lanterns to columns, pedestals, and street furniture, where fine casting ensures that the smallest design details are faithfully reproduced every time.

The manufacturing side of DW Windsor is backed up by helpful and experienced sales office and field sales staff – all qualified to offer constructive technical advice. With the specifying chart as a starting point, they can help the customer to think creatively about heritage-style lighting.



Welding a Scroll bracket.



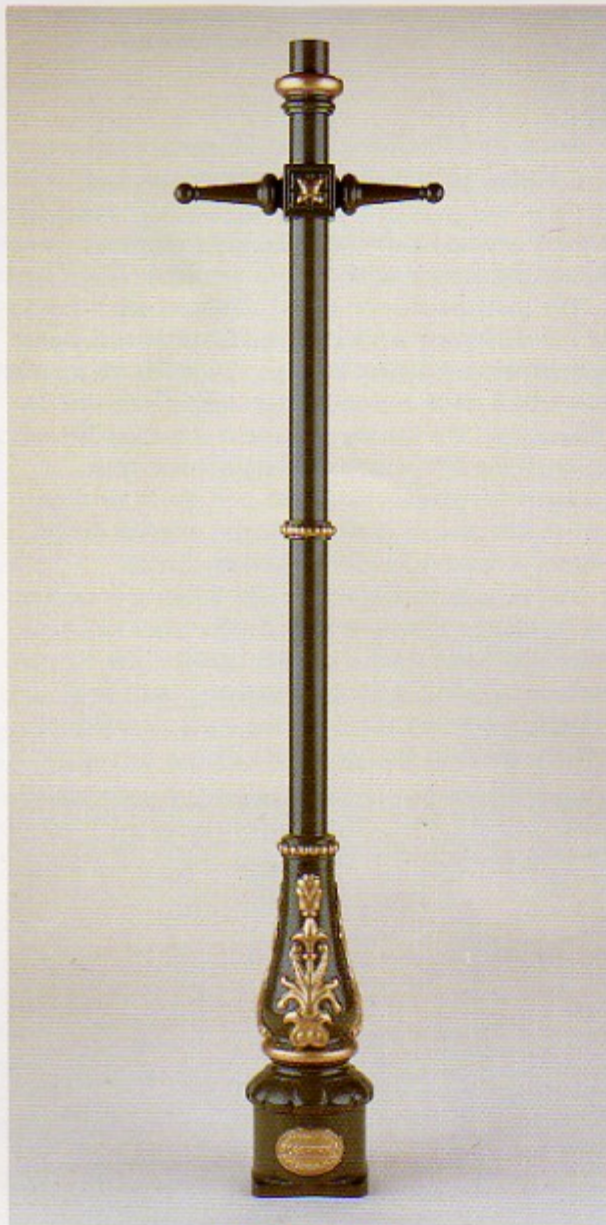
Soldering a lantern frame.

Mounting Options

Lamp Posts

DW Windsor offer a wide range of lamp posts to optimise the effectiveness of a lantern in any location. They combine cast iron decorations for a traditional effect, with steel shafts to reduce weight for handling purposes and to allow for variations in height. Control gear compartments are lockable for security.

Most lanterns can be mounted on the top of posts; alternatively they can be suspended from or mounted on column brackets. Plain or ornate multi-arm brackets can allow up to five lanterns to be mounted on a single post.



Wells lamp post.



Oxford – top details.



Oxford – base detail.

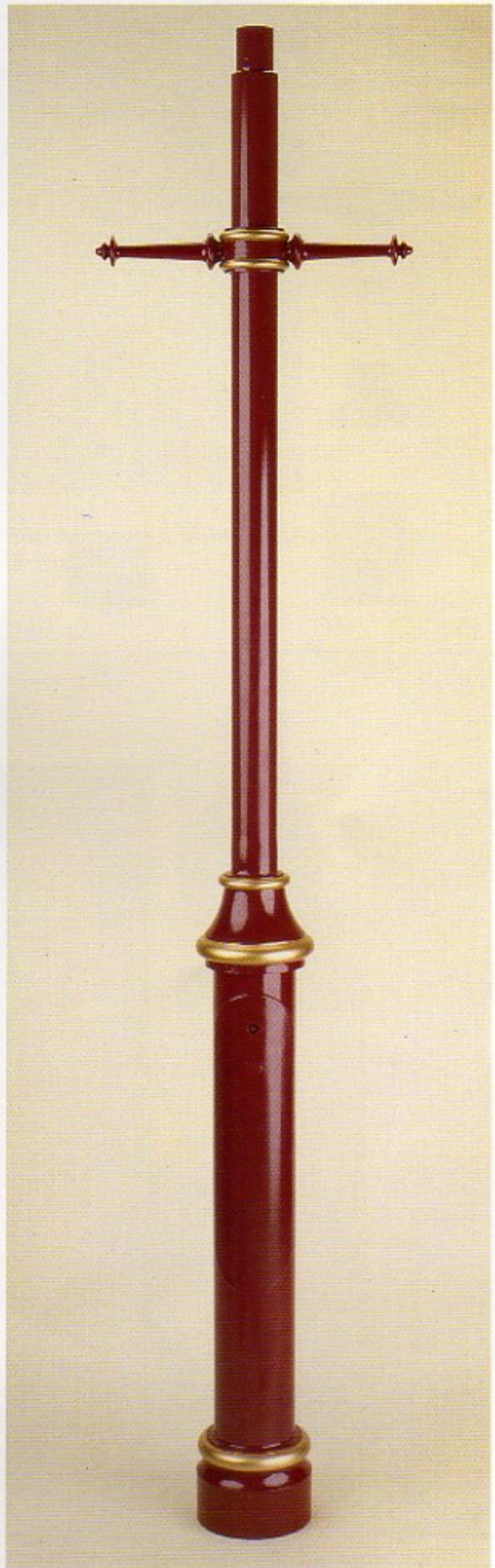
The Oxford is a classic design which epitomises the traditional lamp post, complete with ladder bar. The Norwich, Gloucester, Salisbury, Worcester, Lincoln and Wells are more compact versions of the same design.



Cambridge - top detail.



Cambridge - base detail.

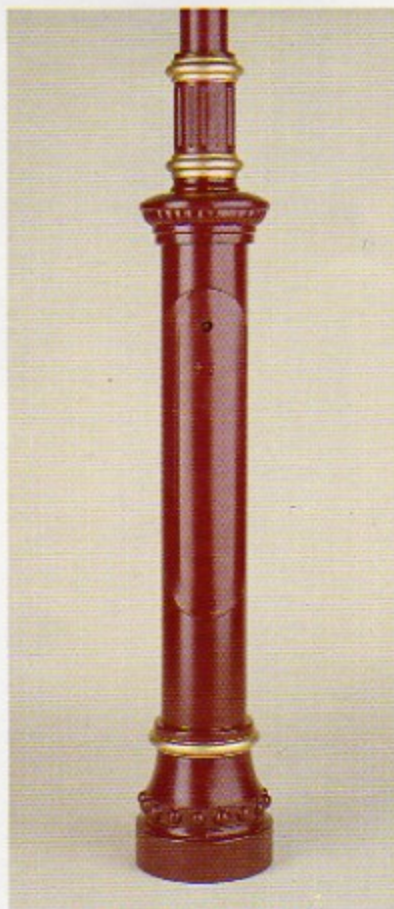
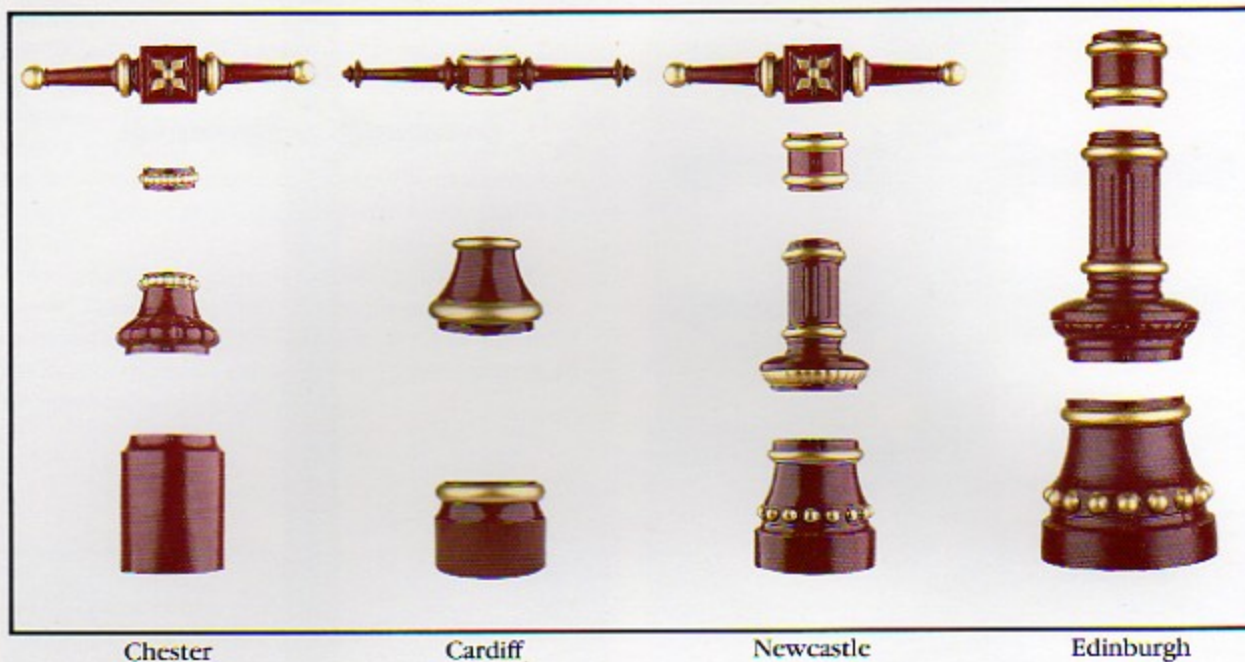


Cardiff lamp post.

The Chester, Cardiff, Newcastle and Edinburgh lamp posts are available in a wide range of mounting heights, either ready-assembled or as column kits. The kits comprise sets of decorative cast iron components to transform plain steel columns into

traditional looking lamp posts, and assembly can be done on site.

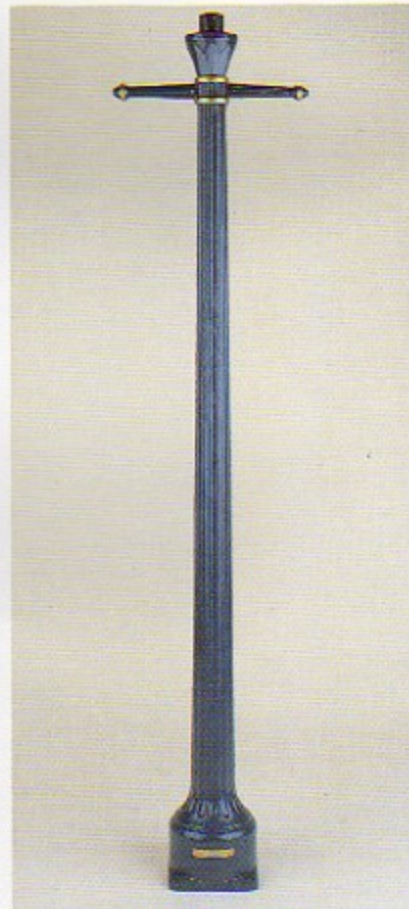
Chester, Cardiff and Newcastle are available with or without the ladder bar.



Newcastle - base detail.



The base compartment doors can, if required, be supplied with special castings featuring an emblem or coat of arms.



London lamp post.



AN BN CN DN EN FN GN HN IN

For those who prefer an "original", DW Windsor hold large stocks of salvaged antique lamp posts, which are supplied re-conditioned.

Pedestals

Pedestals are ideal for mounting lanterns on walls or gateposts, or free-standing in a garden. The designs are derived from the lamp post bases.



Norwich 150 pedestal.

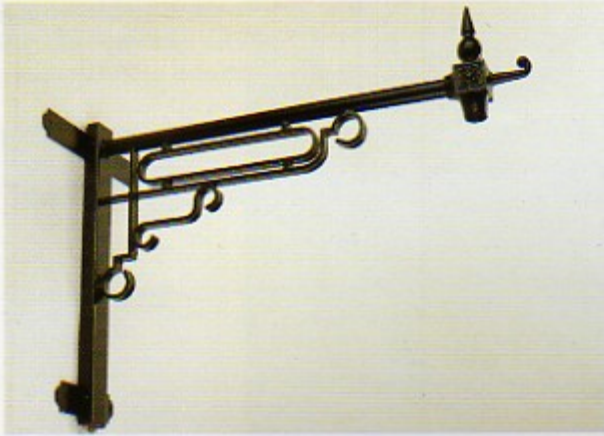


Worcester pedestal.



London and Terrace pedestals
273 and 120mm high respectively.

Brackets



Edinburgh Art Deco wall bracket.

Wall brackets are useful where pavement space is too restricted for a lamp post, or where a building has features that call for lighting emphasis. They are available in a variety of styles, in support or pendant forms.

Lamp post brackets can be used in single or multi-arm configurations, to offset the mounting where necessary.

Throughout this brochure, it is only feasible to illustrate a small selection of the compatible combinations of lanterns, lamp posts and brackets. Please refer to the specifying chart to see the full range of possibilities. Special designs can be made if required.



Large Scroll wall bracket.



Large Plain Cast wall bracket



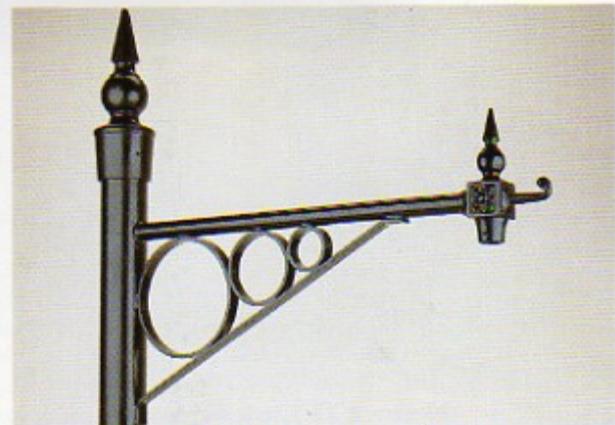
Large Ornate wall bracket.



Small Ornate Pendant wall bracket.



Newcastle Scroll lamp post bracket.



Edinburgh Hoop lamp post bracket.

Street Furniture

A Harmonising Range

For complete design integrity throughout a scheme, DW Windsor offer a range of traditional street furniture to harmonise with their lighting products, giving the customer the convenience of one-source specifying. DW Windsor street furniture can be specified with confidence that the castings are consistently of top quality, so that all the superb

design details are retained.

Delivery of most items is ex-stock from complete ranges kept on the premises.

The following are just a few examples from the DW Windsor range: please ask for the street furniture brochure for full specifications and the complete choice of designs.

Bollards

DW Windsor bollards combine practicality with the enhancement of a hard landscape. They are made from cast iron for strength and durability, and by restricting vehicle access, ensure pedestrian safety.

All can be supplied with a galvanised socket so that they can be located in position and removed when required.



Medium Cannon bollard at Northwick Park in Gloucestershire.

Courtesy of Clarendon Properties Ltd.



Round Head bollards harmonise with the Westminster lanterns on Worcester lamp posts at The Chantry, Bishop's Stortford.

Guard Posts



Hinged guard posts protect the tranquility of Courtyard Mews, Chapmore End in Hertfordshire.



Light Cannon and Short Cannon bollards.



Fluted, Octagonal, Octagonal Hoop and Round Head bollards.



Illuminated bollards –
Fluted, Medium Cannon (with special bolt-down base)
and Octagonal Hoop.

In pedestrian areas, it is useful to have low-level lighting to define potential hazards. DW Windsor illuminated bollards feature robust luminaires, and vandal-resistant screws safeguard the doors into base compartments.

NEW NAMES FOR BOLLARDS
Please note the following amendments
to the text on this page:

<u>WAS</u>	<u>NOW</u>
Octagonal	Bolton
Octagonal Hoop	Octagonal
New Oxford	Rochdale
Oxford	Gloucester

Feeder Pillars

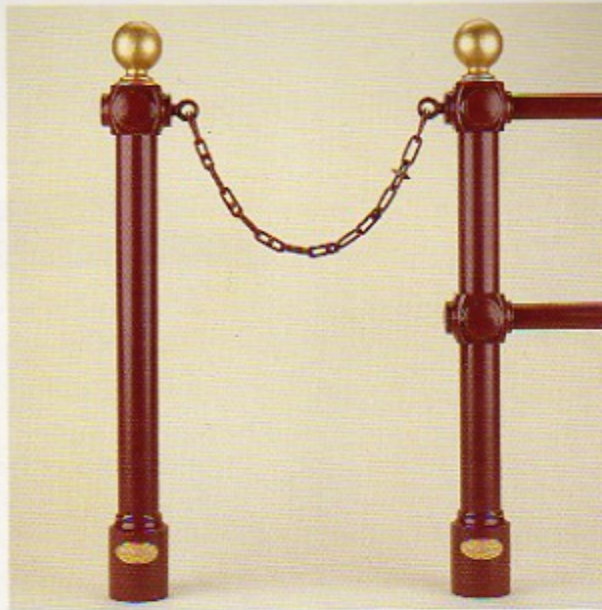


Modern feeder pillars for the electrical supply can strike a discordant note. DW Windsor feeder pillars, however, have been designed to match the ornate features of their lighting columns. Illustrated are the Chester and Newcastle feeder pillars, also available as bollards, i.e. without doors.



New Oxford and Oxford bollards.

Rail and Chain Posts



These are modular systems, so the number of rails, rail heights and post centres can be varied to suit the application. Adaptors allow lighting columns to be incorporated.



Pall Mall lanterns and Chester columns with specially-designed archways are integrated with Windsor hand rails for a scheme at Hastings.



Kerb posts and chains.
Courtesy of Robert Hitchins Homes.

Litter Bins

DW Windsor litter bins are made of robust cast iron, and have lockable galvanised steel liners, for ease of emptying.



Pedestal litter bin.



Octagonal litter bin.

To avoid the possibility of damage to a painted finish in transit, most DW Windsor street furniture is supplied in red oxide primer for painting on site.

These are just a few examples from the DW Windsor range: please ask for the Street Furniture brochure for full specifications and the complete choice of designs.

Sign Posts

Traditional sign posts with cast finger arms are available in plain or ornate configurations, to match other DW Windsor products.



Worcester Ornate sign post.

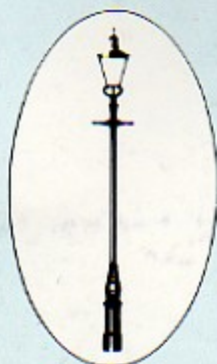
Seating



The Regent seat features hardwood slats and a beautifully detailed cast iron frame.



Each D W Windsor lantern
carries its individually numbered plate as a
record of its creator,
build specification and date.



D.W. Windsor

D W Windsor Limited, Pindar Road, Hoddesdon, Hertfordshire, EN11 0EZ.
Telephone: 0992 445666. Fax: 0992 440493.

