

anaheim®

With lamp wattages ranging from 50W to 150W, Anaheim is suitable for applications on minor as well as major roads. A choice of post-top or side entry mounting adds further flexibility to this robust luminaire. Quick release latches grant tool-free access to lamp and control gear, and the removable gear tray facilitates maintenance work even further, saving time and costs.

Features and Benefits

- Robust construction
Durability
- Post-top or side entry mounting
Flexibility
- Tool-free access to lamp gear
Ease of maintenance
- Removable gear tray
Ease of maintenance


Lamp Types (not supplied)

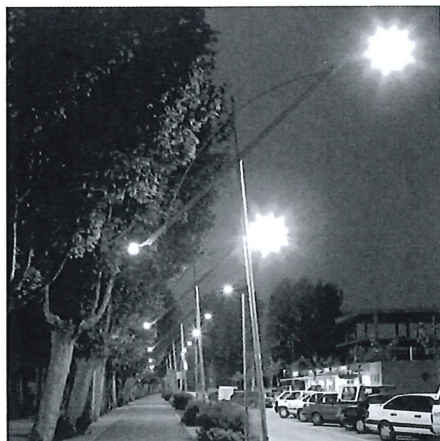
- 50W - 150W
high pressure sodium
- 57W - 70W
compact fluorescent

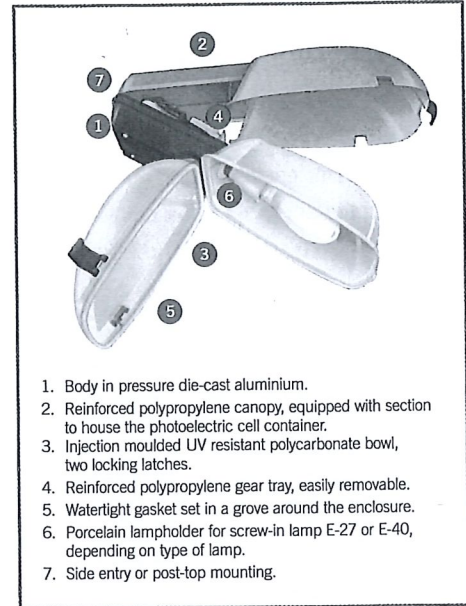
IP Rating

- Optic: IP65 
- Gear compartment: IP44 

Approvals

- Designed to EN60598-2-3
- 

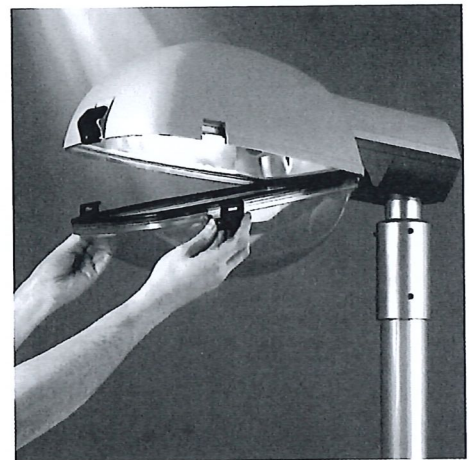




1. Body in pressure die-cast aluminium.
2. Reinforced polypropylene canopy, equipped with section to house the photoelectric cell container.
3. Injection moulded UV resistant polycarbonate bowl, two locking latches.
4. Reinforced polypropylene gear tray, easily removable.
5. Watertight gasket set in a groove around the enclosure.
6. Porcelain lampholder for screw-in lamp E-27 or E-40, depending on type of lamp.
7. Side entry or post-top mounting.



Easy Maintenance



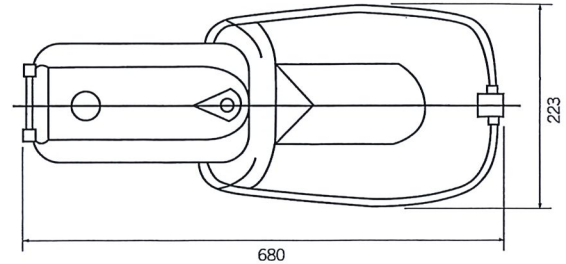
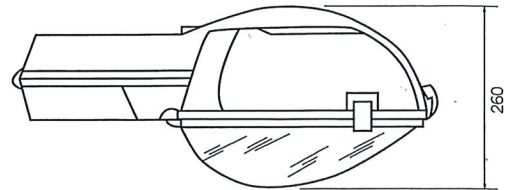
Tool-free access to lamp and control gear via quick release latches



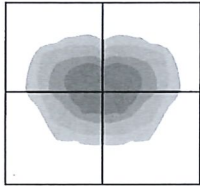
Specification

The luminaire shall consist of a pressure die-cast aluminium body, giving access to the lamp and control gear from the top, and a gear access canopy made of injection-moulded polypropylene. The optic shall consist of an aluminium reflector enclosed by a injection-moulded polycarbonate bowl, sealed to IP65 (optic) and IP44 (gear compartment). The luminaire shall be suitable for 34mm or 42mm side entry and 60mm post-top mounting and be finished in grey.

Dimensions (mm)



Light Distribution



Photometric data is available on the Holophane cd-rom or at www.holophane.co.uk

Windage

Code

Anaheim 0.150m²

Weights & Thermal Data

Lamp Type	Weight (kg)	Minimum Operating Temperature (°C)
50W & 70W High Pressure Sodium	5.5	-30
100W & 150W High Pressure Sodium	6.5	-30

Maximum ambient temperature for the range: 25°C.

Please contact Holophane for maximum temperatures of specific versions.

Ordering Details - Luminaire

Code

ANA Anaheim

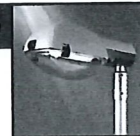
Code	Lamp Type (not supplied)
50XT	50W Clear Tubular High Output HPS Lamp (E27) Base
70XT	70W Clear Tubular High Output HPS Lamp (E40) Base
100XT	100W Clear Tubular High Output HPS Lamp (E40) Base
150XT	150W Clear Tubular High Output HPS Lamp (E40) Base
57TRT	57W Triple Tube 4000K Compact Fluorescent 4-pin Lamp (GX24q-5) Base
70TRT	70W Triple Tube 4000K Compact Fluorescent 4-pin Lamp (GX24q-6) Base

Code	Fixing System
.SE1	34/42mm Side Entry (spigot length required 100mm min.)
.PT60	60mm Diameter Post Top (spigot length required 70mm min.)

Code	Lamp
.LL	Less Lamp

Code	Options
.T1	Complete with NEMA Photocell Socket
.T2	Complete with Miniature Integral Photocell
.MPS	Mains Plug and Socket
.FS	Canopy Fixing Screw

ANA 100XT .PT60 .LL .T1 Example



Note: Luminaires are supplied as standard for use on 240V 50Hz supply.
For 230Hz add prefix 'N'. Other voltages available on request.

Accessories

(Order separately for on site installation by others)

Code

HEL.NEMA	NEMA Photocell
HEL.76	76mm Post Top Adaptor
HEL.SAA42	120mm long x 50mm OD side arm adapters for use on 80mm x 42mm OD side arm brackets
HEL.SAA34	120mm long x 50mm OD side arm adapters for use on 80mm x 34mm OD side arm brackets

Spares

(Order separately for on site installation by others)

Code

ANA.PB	Spare Polycarbonate Bowl
ANA.IT	Spare Latches (Set of 3)

