



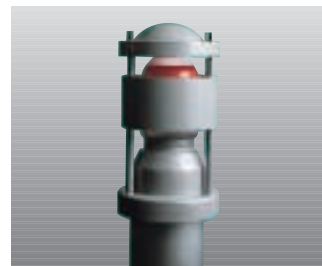
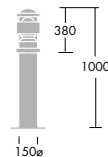
# Johanna & Johanna 2<sup>1:2</sup>

 50W, 80W, 125W | MBF | E27
  50W, 70W | HPS-E | E27
  100W | HPS-E | E40
  100W | White HPS-T (Philips SDW-T) | PG12-1

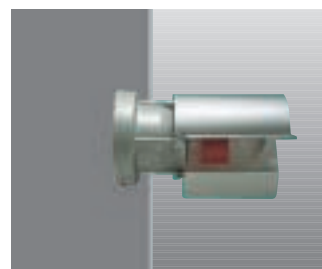
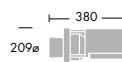
IP44 | EN 60598 |  

Range comprising post-top lantern, bollard and wall mounted bulkhead.

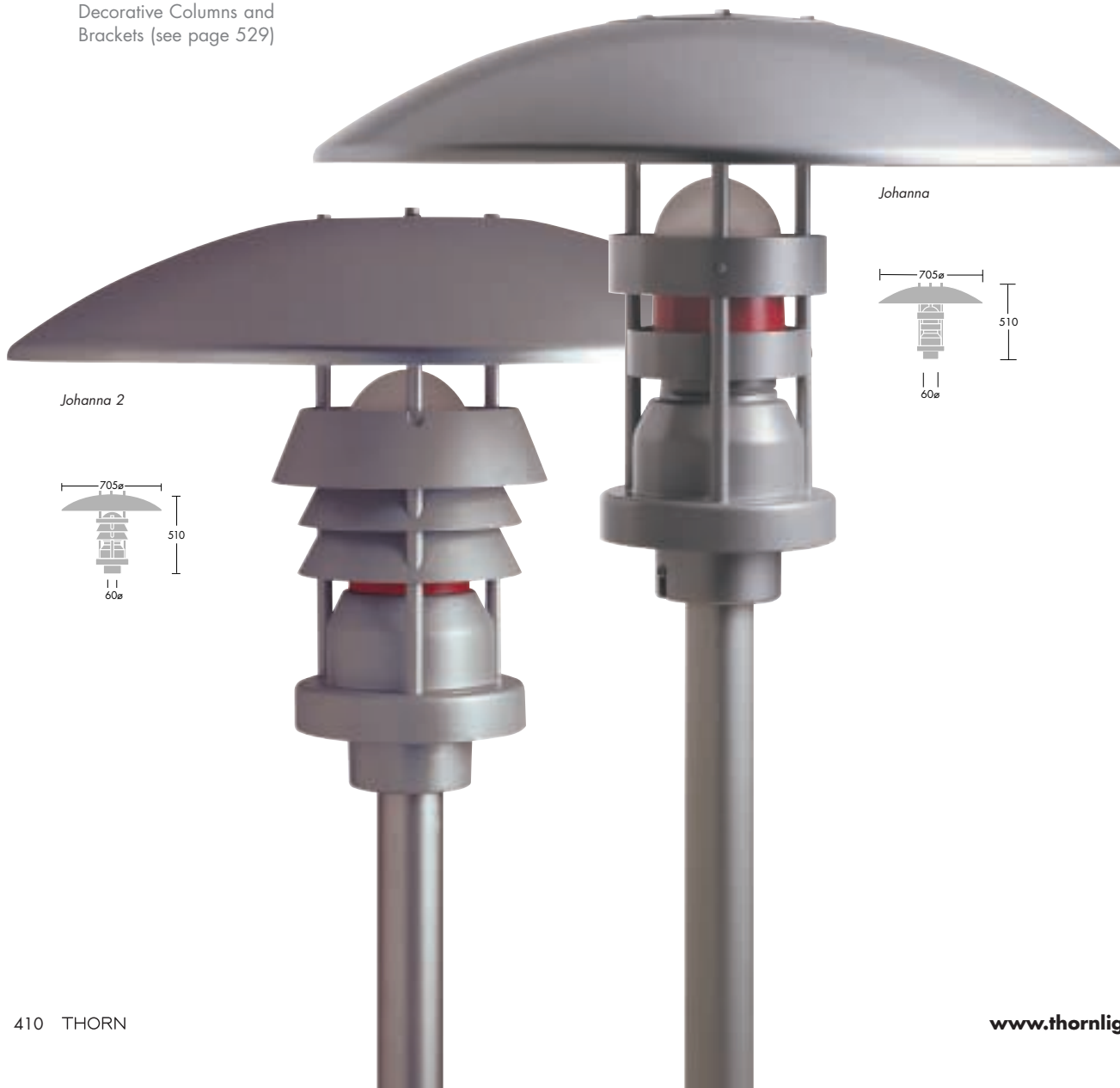
- Distinctive modern style and finish
- 3 mounting options, with a consistent design theme
- Additional louvred post-top lantern available (Johanna 2)
- Design minimises the spread of light above the horizontal
- Post top versions can be mounted onto Cityscape Decorative Columns and Brackets (see page 529)



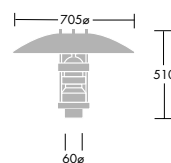
Bollard



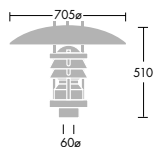
Wall mounted



Johanna



Johanna 2





**Materials/Finish**

Body: Aluminium, stove enamelled silver grey.  
 Top Cover: (lantern only) ABS plastic, top silver grey, underside white.  
 Bowls: Johanna - clear glass with red decorative ring.  
 Johanna 2 - frosted glass.

**Installation/Mounting**

Post top lantern: Suitable for a 60mm Ø spigot, 60mm long. Recommended height 4-5m for lantern. Lanterns for dual wattages have control gear wired for the higher rating, but can be reconnected easily on site.

**Specification**

To specify state:  
 Decorative, aluminium post-top/louved/lantern/wall bulkhead/bollard exterior luminaire.  
 As Thorn Johanna/Johanna 2.

**Ordering Guide** Lamps to be ordered separately.

Lamp type & rating	Description	Weight (kg)	Cat. No.
<b>Post Top Lantern</b>			
<b>Johanna</b>			
HPS-E 50/70W	Standard lantern with gear assembly*	4.5	QGJ 1070.4
HPS-E 100W	Standard lantern with gear assembly*	6.7	QGJ 1100.4
MBF 80/125W	Standard lantern with gear assembly*	4.5	QGJ 1125.4
<b>Johanna 2</b>			
HPS-E 50/70W	Louved lantern with gear assembly*	4.9	QGJ2 1070.4
HPS-E 100W	Louved lantern with gear assembly*	4.6	QGJ2 1100.4
HPS-T White 100W	Louved lantern with gear assembly*	4.7	QGJ2 1100W.4
MBF 80/125W	Louved lantern with gear assembly*	4.7	QGJ2 1125.4
	Canopy* (for Johanna or Johanna 2)	2.0	QGJF
<b>Bollard</b>			
HPS-E 50/70W	Bollard with gear assembly†	4.6	QGJA 1070.4
MBF 80W	Bollard with gear assembly†	4.6	QGJA 1080.4†
	Bollard base	4.0	QGJA
<b>Wall Mounted Bulkhead</b>			
HPS-E 50/70W	Bulkhead with integral control gear	3.9	QGJW NB1070.4
MBF 50/80W	Bulkhead with integral control gear	3.9	QGJW B1080.4

Note: Windage (post top lantern) 0.1m<sup>2</sup>  
 \* Order lantern and canopy for complete fitting.  
 † Order bollard gear assembly and base for complete fitting.  
 All lanterns are supplied with the control gear wired to the higher of the dual wattage ratings. For the lower wattage, the gear can be easily reconnected on site by the installing contractor.  
 A matching Johanna 2 style louved bollard is available to order.  
 Export voltages available, refer to page 553 for details.

