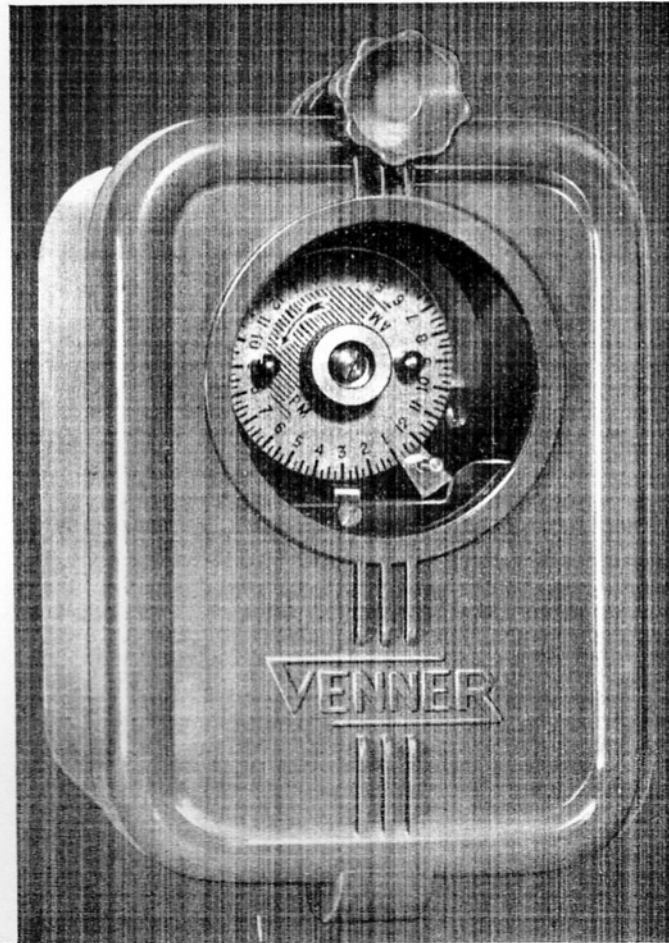


VENNER

TYPE MD1DC

LEAFLET L5

SYNCHRONOUS MOTOR DRIVEN 15 AMP DOUBLE CIRCUIT TIME SWITCH HAND SET FOR SOLAR DIAL IN CAST METAL CASE



This time switch will control two separate lighting circuits or two groups of lamps in one fitting.

The standard contact arrangement switches both circuits ON at a set time, one circuit OFF at, say, midnight, and the other circuit OFF at, say, 7 a.m.

The three adjustable hands on the dial may be set to any desired time, but must always obey the same sequence, i.e. both circuits ON, one circuit OFF, second circuit OFF.

The minimum ON period for both circuits is 30 minutes the interval between the two OFF hands two hours.

The switch is of plug-in design and may be instantly removed from the case without disconnecting the wiring.

SPECIFICATION

Self-starting synchronous motor driven, keeping accurate mains time.

DIAL 24-hour dial fitted with three adjustable hands held in position by thumb nut. This nut is slightly slackened, hands set to desired times, and nut made hand tight.

MINIMUM SETTING Both circuits ON 30 minutes, between two OFF switchings 2 hours.

CASE Aluminium die-cast, type C.150, with thumb screw fastening on hinged front cover fitted with glass window. Normally supplied for surface mounting, this case can be supplied suitable for flush mounting at slight extra cost.

Alternative cases :-

Weatherproof wall-mounting case with tapped bosses for conduit entry top and bottom, type C.118A.

Weatherproof wall-mounting case with tapped bosses for conduit entry top and bottom and space for s.p. or d.p. fuses, type C.322.

MANUAL KNOB Manual knob enables circuits to be switched ON or OFF without affecting normal dial operation.

TERMINAL BLOCK A four-way terminal block is fitted as standard.

RATING 15 amps, i.e. 7.5 amps each circuit, 100/120 or 200/250 volts, 50 cycles AC only. (Other Voltages and Frequencies to special order).

DIMENSIONS $4\frac{1}{8}$ " wide \times $4\frac{5}{16}$ " deep \times $6\frac{9}{16}$ " high. (10.48 cm. \times 10.95 cm. \times 16.67 cm.).



VENNER LIMITED · KINGSTON BY-PASS · NEW MALDEN · SURREY · MALDEN 2442