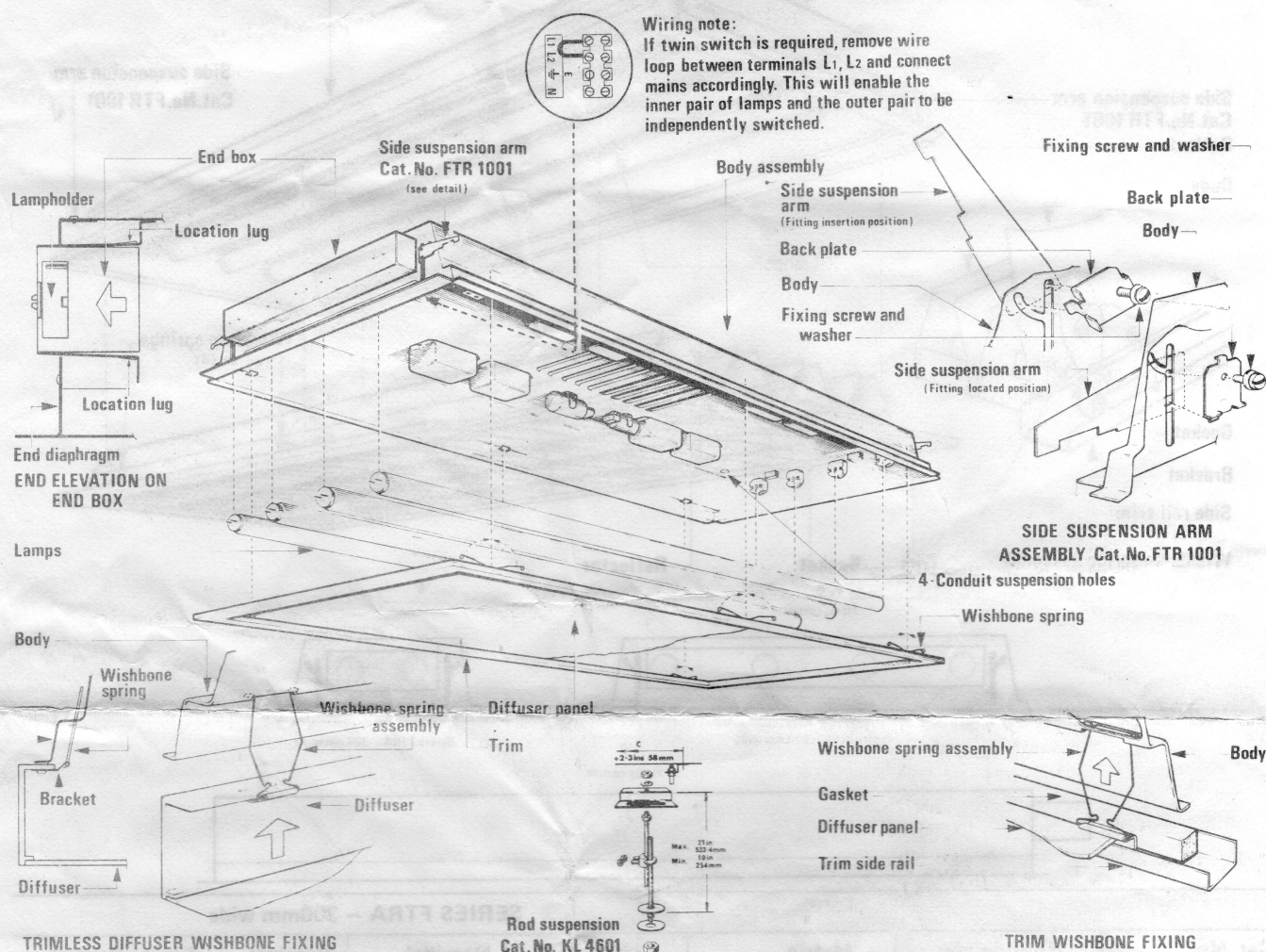


Installation and Wiring Instructions for

NEW FORMAT RANGE



INSTALLATION

The electrical installations are normally carried out before the suspended ceiling is installed, and reference should be made to the dimensions table for the normal fixing centres of the fitting. Fitting bodies are designed for use with standard grid systems on both Metric and Imperial modules. Whilst the body is common to both modules, separate Metric or Imperial attachments are required.

METHODS OF SUSPENSION

A. Using Conduit

1. Suspend conduits from the structural ceiling at the centres shown in the table of dimensions and bring mains supply leads through the entry which will be adjacent to the mains terminal block in the fitting.
2. Attach one locknut and one washer to each conduit and adjust to give approximate troffer alignment with suspended ceiling.
3. Insert troffer body through ceiling aperture (from below), locate all four suspension conduits and secure with conduit washers and locknuts.
4. Release end box from temporary installation position and push out until it "snaps" into place in the end diaphragm.

B. Using Rod Suspension

A rod suspension unit (Cat. No. KL 4601) is available as an alternative suspension, using same holes as for conduit suspension.

1. Attach rod to 'first-fixings' in structural ceiling (see dimensions table).
2. Loosely assemble the suspension adjusters and fix lower rods to the troffer body, pass the fitting through the ceiling aperture and screw the adjusters on to the suspension rods. Bring mains lead into the fitting, through cable entry adjacent to mains terminal block.
3. Align fitting with suspended ceiling level to allow for diffuser frame and lock suspension adjuster nuts.
4. Release end box from temporary installation position and push out until it "snaps" into place.

C. Side Suspension (Set of 4 side suspension arms Cat. No. FTR 1001)

1. Raise the side suspension arms into the 'tilted-up' position and tighten screw just sufficiently to hold these in place. (See diagram).
2. Insert fitting into ceiling opening and bring mains cable into the fitting adjacent to mains terminal block.
3. Loosen screw of suspension arm until the arm is approximately horizontal and locates on the top of the Tee bar.
4. Adjust fitting relative to suspended ceiling level to allow for diffuser frame and tighten screws to secure.
5. Release end box from temporary installation position and push out until it 'snaps' into place

ATTACHMENTS

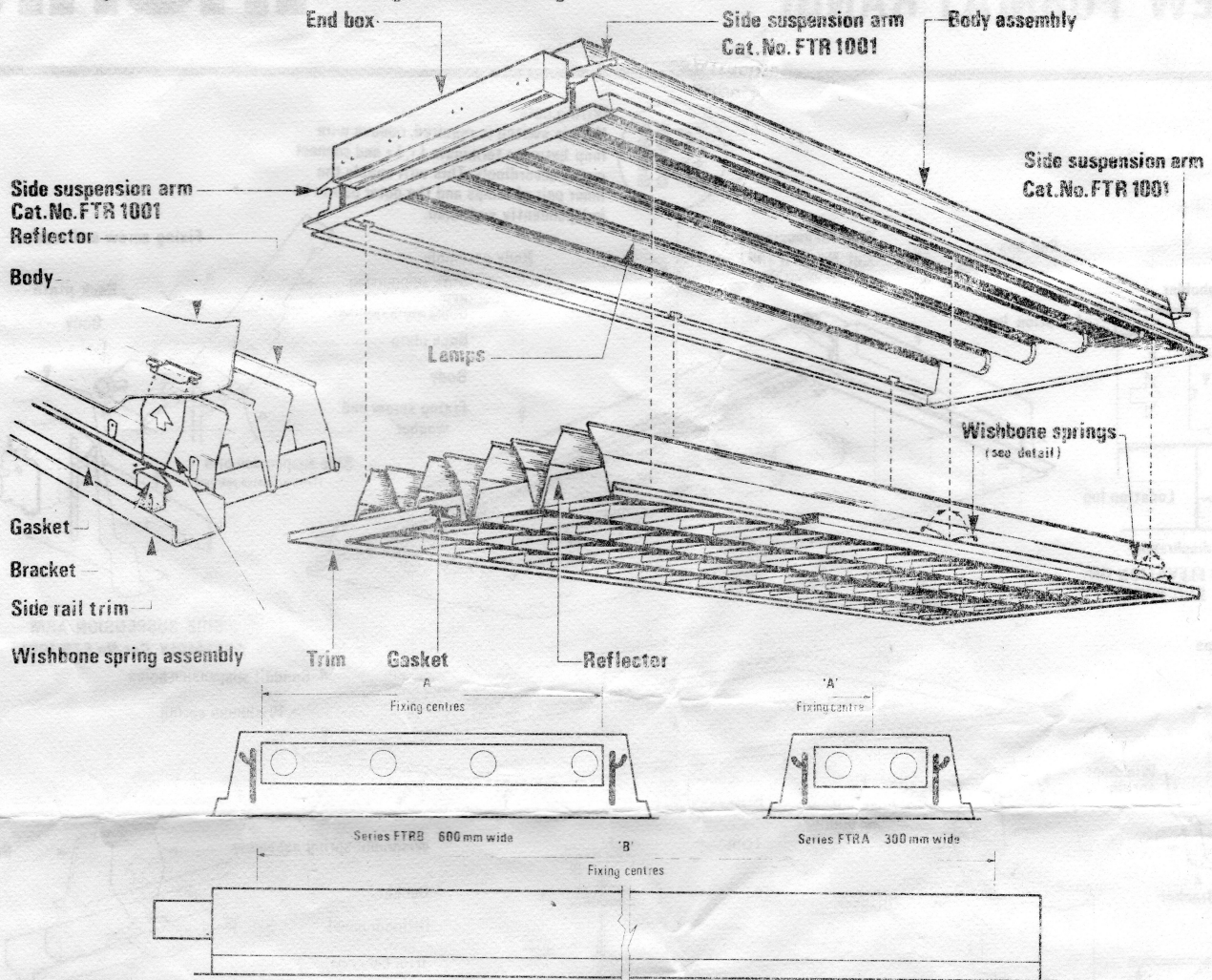
Three categories of attachment are available for use with the Recessed Troffer Range.

1. Diffuser panels and controllers c/w frame
2. Fabricated, frameless diffusers
3. Reflector systems — for 4-tube versions only.

These are available in Metric or Imperial sizes for use with each size of common body. (Nominal 600mm Series FTRB).

All these are fitted with "wishbone" springs for attachment to the body.

See diagram for method of attaching frame to fitting.



SERIES FTBA — 300mm wide

| Cat. No. | Housing c/w Gear Cat. No. | Metric Attachment Cat. No. | Imperial Attachment Cat. No. | Nominal Metric Dimension | Nominal Imperial Dimension | Fixing Centres | |
|-------------|------------------------------|-------------------------------|---------------------------------|--------------------------|----------------------------|----------------------------|--------|
| | | | | | | A (mm) | B (mm) |
| FTRA/O 140 | FTRA 140 | FTRO 34 | FTRO 14 | 300 x 1200mm | 1' x 4' | Suspensions on centre line | 900 |
| FTRA/O 1685 | FTRA 1685 | FTRO 36 | FTRO 16 | 300 x 1800mm | 1' x 6' | | 1350 |
| FTRA/O 240 | FTRA 240 | FTRO 34 | FTRO 14 | 300 x 1200mm | 1' x 4' | Suspensions on centre line | 900 |
| FTRA/O 2685 | FTRA 2685 | FTRO 36 | FTRO 16 | 300 x 1800mm | 1' x 6' | | 1350 |

SERIES FTRB — 600mm wide

| Cat. No. | Housing c/w Gear Cat. No. | Metric Attachment Cat. No. | Imperial Attachment Cat. No. | Nominal Metric Dimension | Nominal Imperial Dimension | Fixing Centres | |
|-------------|------------------------------|-------------------------------|---------------------------------|--------------------------|----------------------------|----------------|--------|
| | | | | | | A (mm) | B (mm) |
| FTRB/O 320 | FTRB 320 | FTRO 62 | FTRO 22 | 600 x 600mm | 2' x 2' | 450 | 450 |
| FTRB/O 340 | FTRB 340 | FTRO 64 | FTRO 24 | 600 x 1200mm | 2' x 4' | 450 | 900 |
| FTRB/O 3685 | FTRB 3685 | FTRO 66 | FTRO 26 | 600 x 1800mm | 2' x 6' | 450 | 1350 |
| FTRB/O 420 | FTRB 420 | FTRO 62 | FTRO 22 | 600 x 600mm | 2' x 2' | 450 | 450 |
| FTRB/O 440 | FTRB 440 | FTRO 64 | FTRO 24 | 600 x 1200mm | 2' x 4' | 450 | 900 |
| FTRB/O 4685 | FTRB 4685 | FTRO 66 | FTRO 26 | 600 x 1800mm | 2' x 6' | 450 | 1350 |

Letter O denotes Opal diffuser c/w frame with "wishbone" attachment to body housing.

P denotes K12 Prismatic controller c/w frame.

H denotes K19 Prismatic controller c/w frame.

Z denotes Polarized Panel c/w frame.

D denotes Diffuser attachment; Opal base and Opal sides.

E denotes Diffuser attachment; K12 base and Opal sides.

| | | | | | | | |
|-------------|-----------|---------|---------|--------------|---------|-----|------|
| FTRB/L 420 | FTRB 420 | FTRL 62 | FTRL 22 | 600 x 600mm | 2' x 2' | 450 | 450 |
| FTRB/L 440 | FTRB 440 | FTRL 64 | FTRL 24 | 600 x 1200mm | 2' x 4' | 450 | 900 |
| FTRB/L 4685 | FTRB 4685 | FTRL 66 | FTRL 26 | 600 x 1800mm | 2' x 6' | 450 | 1350 |

Letter L denotes Low brightness attachment c/w frame for attachment to body housing.

X denotes symmetrical louvre (with batwing distribution) attachment c/w frame for attachment to body housing.