



Instruction Leaflet
Bedienungsanleitung
Hojas de instrucciones
Feuille d'instructions
Foglio d'istruzioni
Betjeningsvejledning
Instructies
Instruktionsfolder

Remote Mounting Photo-cell and Controller **(GB)**

Entfernt montierte Fotozelle mit Steuergerät **(D)**

Fotocélula y Controlador para Montaje a Distancia **(E)**

Photocellule deportable et contrôleur **(F)**

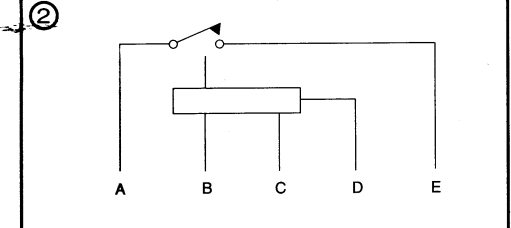
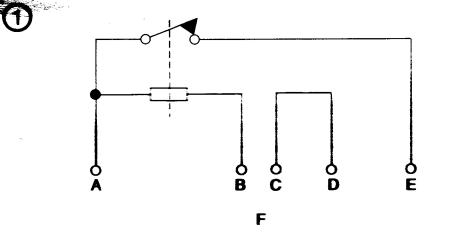
Fotocellula e controller con montaggio a distanza **(I)**

Fjernmontering af fotocelle og controller **(DK)**

Apart te bevestigen fotocel en regelaar **(NL)**

Fotocell och kontroll för avståndsmontering **(SE)**

Figures / Abbildung / Figura / Figurer / Afbeeldingen



(GB) Thermal

- A. Line Brown
- B. Cell 1
- C. Cell 2
- D. Neutral Blue
- E. Load Large White
- F. Small White

(D) Thermisch

- A. Brauner Leiter
- B. Zelle 1
- C. Zelle 2
- D. blauer Nulleiter
- E. Breites weißes Lastkabel
- F. Schmales weißes Lastkabel

(E) Térmico

- A. Línea, marrón
- B. Célula 1
- C. Célula 2
- D. Neutro azul
- E. Carga, blanco grande
- F. Blanco peque

(F) Thermique

- A. Ligne marron
- B. Cellule 1
- C. Cellule 2
- D. Neutre bleu
- E. Charge blanc grande
- F. Petit blanc

(I) Termico

- A. Linea marrone
- B. Cellula 1
- C. Cellula 2
- D. Neutro blu
- E. Carico grande bianco
- F. Lille piccolo

(DK) Termisk

- A. Linje brun
- B. Celle 1
- C. Celle 2
- D. Neutral blå
- E. Stor belastning hvid
- F. Lille hvid

(NL) Thermisch

- A. Leiding bruin
- B. Cel 1
- C. Cel 2
- D. Neutraal blauw
- E. Belasting groot Wit
- F. Kleine witte

(SE) Termisk

- A. Linje Brun
- B. Cell 1
- C. Cell 2
- D. Neutral Blå
- E. Belastning Stor Vit
- F. Liten vit

(GB)

- Electronic
- A. Line Brown
- B. Cell 1 Red
- C. Cell 2 Violet
- D. Neutral Blue
- E. Load White

(D)

- Elektronisch
- A. Brauner Leiter
- B. Zelle 1 rot
- C. Zelle 2 lila
- D. blauer Nulleiter
- E. weißes Lastkabel

(E)

- Electrónico
- A. Línea, marrón
- B. Célula rosso 1
- C. Célula violet 2
- D. Neutro, azul
- E. Carga, blanco

(F)

- Électronique
- A. Ligne marron
- B. Cellule 1 rouge
- C. Cell 2 violet
- D. Neutre bleu
- E. Charge blanc

(I)

- Elettronico
- A. Linea marrone
- B. Cellula 1 rosso
- C. Cellula 2 viola
- D. Neutro blu
- E. Carico bianco

(DK)

- Elektronisk
- A. Linje brun
- B. Celle 1 rød
- C. Celle 2 violet
- D. Neutral blå
- E. Belastning hvid

(NL)

- Elektronisch
- A. Leiding bruin
- B. Cel 1 rood
- C. Cel 2 paars
- D. Neutraal blauw
- E. Belasting wit

(SE)

- Elektronisk
- A. Linje Brun
- B. Cell 1 Röd
- C. Cell 2 Lila
- D. Neutral Blå
- E. Belastning Vit



Electronic	472-1492
Electronic	215-9609

General

The unit comprises a controller and a photo-cell separated by a lead length of 300mm in order to facilitate greater mounting flexibility. The unit is designed to automatically switch lighting loads ON and OFF depending on the ambient lighting levels. It is designed to be built into an enclosure and is particularly suited for incorporating within a bulkhead fitting or road sign.

Installation

The sensor unit, containing the light sensitive photo-cell, is supplied complete with two neoprene washers and a 20mm plastic nut and is designed to be mounted through a 20mm diameter hole. It is important that the photo-cell is mounted in such a way that it is not influenced by any light, direct or reflected, emitted from the luminaire or fitting it is controlling. If however after installation, the controlled light is switching ON and OFF periodically, then light from the fitting is Affecting the controller and the position of the sensor should be moved.

Connections

Brown - Line
Blue - Neutral
White - Load

No earth connection is required on the unit. However the fitting into which the unit is incorporated may need an earth and reference to the manufacturer's instructions should be made.

Testing

To check the correct operation of the photo-cell, cover the sensor lens for approximately 1 minute, the unit will then switch ON. Remove the cover and wait for approximately 45 seconds, the unit will then switch OFF.

WARNING: When the unit is first switched ON, the lamp circuit will be energised and the lamp holder contacts will be LIVE until the unit has switched OFF in daylight, approximately 45 seconds later. At ALL times whilst the power is applied, the sensor will have an a.c. voltage across it which can be as high as 230 Volts. The sensor connections will at all times be AT MAINS POTENTIAL RELATIVE TO EARTH. SWITCH OFF MAINS SUPPLY BEFORE REMOVING SENSOR OR CONTROLLER. It is important that the mains supply to the unit is maintained at all times and that before removing the cover for maintenance or any change to sensor or controller, the mains supply is isolated. Insulation testing by a suitable instrument can be carried out on circuits including photo-cells, but not continuity tests, as high voltage used may damage the photo-cell.

Technical Specification

Type of Control:	Electronic	Electronic
Supply Voltage:	230V 50/60Hz	230V 50/60Hz
Rating:	5A resistive 2 x 250W	8A resistive 3 x 400W
Temperature Range:	-15° to + 65°C	-20° to + 80°C
Power Consumption:	Day 3.2W Night 0.01W	0.25W
Switching Differential:	1:1.5	1:0.5
Switch On Level:	70 lux	70 lux
Switch Off Level:	105 lux	35 lux

RS Components shall not be liable for any liability or loss of any nature (howsoever caused and whether or not due to RS Components' negligence) which may result from the use of any information provided in RS technical literature.

