

PRT 5/10/15 ^{1:2}

Formerly known as **Haline 5/10/15**. Updated September 2004

 500W, 1000W, 1500W	QT-DE12 R7s	IP55	EN 60598	  
--	-------------	------	----------	---

A range of compact enclosed tungsten halogen floodlights for small area floodlighting.

- Ideal for building sites, advertising hoardings, and security applications
- For 500, 1000 and 1500W linear halogen lamps
- Suitable for interior as well as exterior use
- Fully adjustable mounting stirrup
- Hinged front frame for easy maintenance access



PRT 5

Materials/Finish

Body: Die-cast aluminium LM6, finished in black polyester powder coat paint.

Front glass: Tempered soda lime.

Glass: 5mm (500W), 4mm (1000 and 1500W).

Reflector: Aluminium, dimpled texture, anodised.

Wiring box: Glass reinforced nylon.

Mounting stirrup: Galvanised steel, painted black.

Gasket: Silicone rubber.

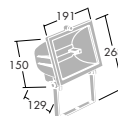
Ordering Guide

Lamps to be ordered separately.

Lamp type & rating	Description	Projection area (m ²)	Windage (m ²)	Weight (kg)	Cat. No.
QT-DE12 500W	PRT 5	0.048	0.10	2.1	ODWC500
QT-DE12 1000W	PRT 10	0.079	0.12	3.1	ODWC1000
QT-DE12 1500W	PRT 15	0.094	0.14	3.4	ODWC1500

Accessories For dimensional details see p 379.

Description	Cat. No.
Light duty wall mounting bracket for use with 500, 1000 and 1500W types	SUB
Heavy duty wall mounting bracket for use with 500, 1000 and 1500W types	OHA4601
Mounting cap for 76 Ø x 76 min. depth spigot, mounts 1 x PRT	OHA4612





Installation/Mounting

Adjustable over a wide range of angles.

Wiring box must not be mounted directly above floodlight body. Cable gland into wiring box suitable for 8-12mm circular section cable.

Two way terminal block suitable for 2.5mm cable, plus earth stud. Maximum ambient temperature 25°C.

Mounting stirrups are drilled with central plus 2 outer holes, as follows:

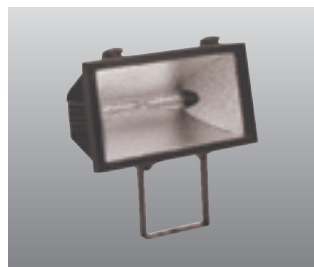
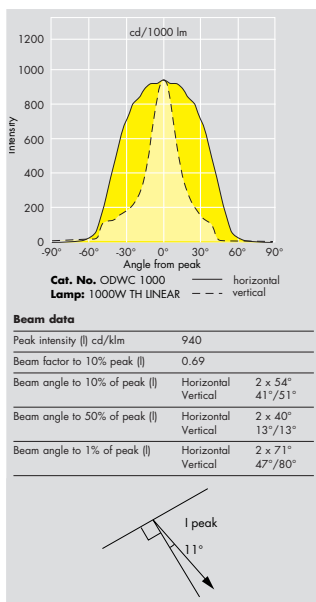
500W central 8mm Ø, outers 2 x 6.5mm at 60mm centres
 1000/1500W central 9mm Ø, outers 2 x 9mm at 70mm centres.
 Front frame secured by screw (500W), and by toggle requiring flat blade to open (1000/1500W).

Specification

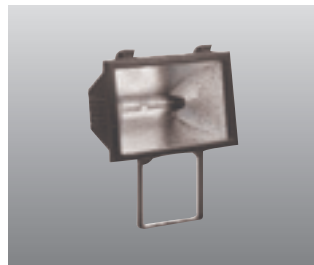
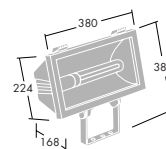
To specify state:

Enclosed tungsten halogen floodlight in LM6 cast aluminium, finished in black polyester paint with adjustable stirrup and integral wiring box.

As Thorn PRT.



PRT 15



PRT 10

