
STOP PRESS

Page

Hermes 2
High-bay luminaires for 150W-400W
discharge lamps 435

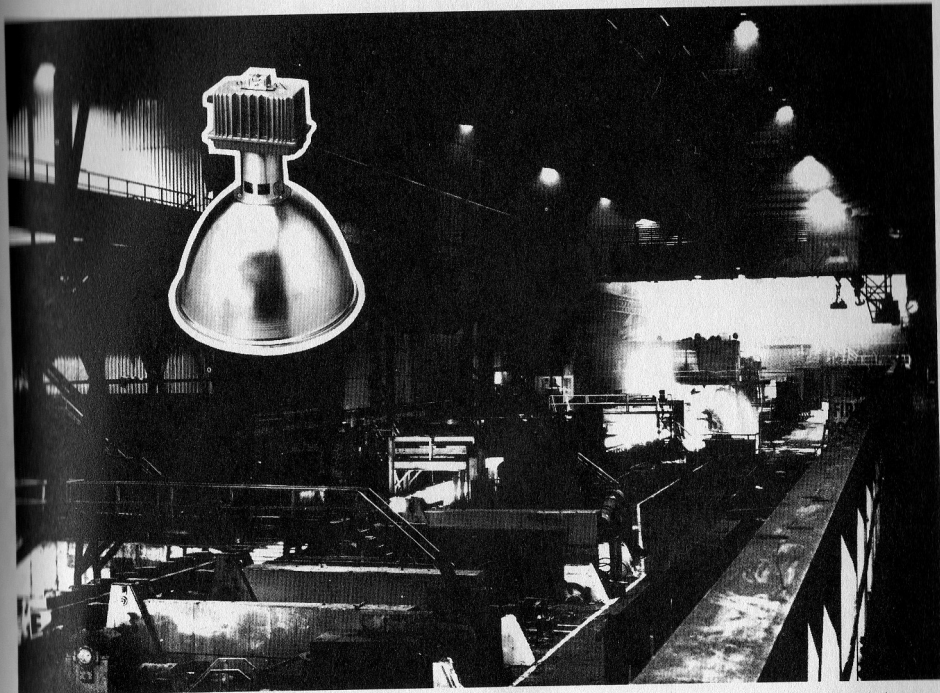
Hermes 2
Prewired gearbox 150W-400W 439

Products offered for sale may differ from those described or illustrated in the **STOP PRESS** section due to later production changes in specifications, components or place of manufacture. The contents of this section are therefore not to be treated as representations as to the current availability of products as described, or as to products actually offered for sale.

CI/SFB (63.1)

UDC
696.6:628.972**STOP PRESS**

HERMES 2

**High-bay luminaires for
150W-400W discharge lamps**

A high-bay luminaire which accommodates SON, HPL-N or HPI discharge lamps in ratings from 150W to 400W. An adjustable lamp-holder assembly permits the user to set any required light distribution from WideSpread through dispersive to concentrated, using the same reflector. The lampholder can also be used with a reflective skirt, permitting the use of HPL-R and SON R reflector lamps.

Range

The luminaire accommodates the following lamp types:—

150W SON	250W HPL-N
250W SON	250W HPL-R
250W SON R	400W HPL-N
400W SON	400W HPL-R
400W SON R	400W HPI/V

A simple ordering code specifies the correct components from the following options:—

- 5 Hermes cast alloy gear boxes
- Universal reflector with adjustable lampholder

Reflective skirt and adjustable lamp-holder

Wireguard (optional) for reflector

Dust-resistant Makrolon seal and lamp-holder gaiter for reflector

Mounting plate for use with remote gear.

Handbook Ref.

2.3.1.

To reorder this data sheet quote PL 1867

Replaces

NEW

DISCHARGE FITTINGS

Applications

For use wherever high-bay discharge lighting is appropriate, particularly at luminaire mounting heights over 3m and in high ambient temperatures, in situations such as:-

- Stores and warehouses
- Foundries and drop forging plants
- Factory production areas
- Railway and bus termini
- Loading bays
- Hypermarkets and Cash & Carries
- Indoor sports halls and complexes

Features

- Simple lampholder adjustment permits the user to accommodate a wide range of discharge lamps in the same reflector, and to set any required light distribution.
- Since the lampholder moves with respect to the reflector and gear, the adjustment can be made at any time after installation to suit changing requirements.
- The variable spacing/mounting height ratio provided by the adjustable distribution eliminates compromise. It permits the lighting designer to install the correct number of luminaires for the required illuminance level and then set them to give the optimum uniformity of illumination. No more luminaires are used than are strictly necessary, thus saving energy, and the design of the installation is greatly simplified.
- Slots in the lampholder housing allows a through current of air to render the luminaire self-cleaning. An optional Makrolon cover and dust-resisting lampholder gaiter can be used to seal the reflector in very dirty environments.
- Rugged cast-alloy gear box assembly (IP54) withstands ambient temperatures up to 45°C; the system retains full efficiency at this temperature (35°C if reflector is fitted with Makrolon cover).
- Simple, speedy installation; all components are positively supported before any wiring has to take place.
- Optional wireguard protects the lamp assembly against knocks etc.
- Reflective skirts permit the use of internal reflector lamps.
- Very few components complete the entire range, helping availability and greatly simplifying ordering by means of an easily-understood code.
- Optional mounting plate carries the lampholder assembly, permitting the gear box to be mounted remotely.

Approximate Lumen Packages	Power consumption (Watts)	
	SON	HPL-N
13,000	150	250
21,000	250	400
40,000	400	700

Lamp Comparison Table

The Hermes 2 150W-400W industrial high bay luminaire is available with control gear to operate the following discharge lamps:-

Universal reflector luminaire

High-pressure sodium (SON) 150W, 250W, 400W.

Mercury fluorescent (HPL-N) 250W, 400W.

Mercury halide (HPI/V) 400W.

Reflective skirt luminaires

High-pressure sodium reflector

(SON R) 250W, 400W.

Mercury fluorescent reflector (HPL-R) 250W, 400W.

Mercury fluorescent lamps provide the traditional cool white light normally associated with high bay luminaires. Energy-saving high-pressure sodium lamps provide a warmer light, and have colour rendering properties that are suitable for many industrial applications.

The table below gives the wattage of mercury and sodium lamps of comparable lumen output, and shows the significant savings in energy consumption that can be gained by changing to high-pressure sodium.

Ordering Data

Catalogue No.	Description	Weight (kg/lb)
Reflectors		
R.0010	Universal reflector	1.7/3.7
R.0020	Reflective skirt	1.1/2.4
Accessories		
W.0001	Wireguard	0.6/1.3
W.0002	Makrolon dust cover/gaiter	1.0/2.2
W.0003	Mounting terminal plate	0.1/0.2
Hermes 2 pre-wired gear boxes		
S.1500	Gear box for 150W SON lamp	
S.2500	Gear box for 250W SON & SON/R lamps	7.5/16.5
S.4000	Gear box for 400W SON & SON/R lamps	8.7/19.1
H.2500	Gear box for 250W HPL-N & HPL-R lamps	6.0/13.2
H.4000	Gear box for 400W HPL-N & HPL-R lamps	7.1/15.6
H.4000/1	Gear box for 400W HPI/V lamp	7.2/16.0

Notes:

1. The ordering code for the Universal reflector or reflective skirt also calls up the adjustable lampholder assembly, which attaches directly to the Hermes 2 gear box to provide a luminaire with integral gear. The mounting terminal plate secures the lampholder assembly directly to the conduit drop, and is usually required when the gear box is mounted remotely.
2. The maximum permissible distances between SON/HPI lamps, and remote-mounted gear boxes are given in Technical Information Sheet No. 6.
3. A complete Hermes 2 luminaire is ordered by means of a four-digit code number made up by straightforward addition of the catalogue numbers of the component parts. A prefix letter denotes the type of lamp (S for sodium; H for mercury).
i.e. Gearbox S.4000
Reflector R.0010
Makrolon cover W.0002

Complete ordering code S.4012

The discharge lamp must always be ordered separately.

The luminaire in the example above is ordered as follows:-

Philips Hermes 2 high-bay luminaire S.4012 and 400W SON lamp.

4. Individual parts and accessories can be ordered separately under the Catalogue Numbers given above.

Data Sheet Reference

Complete information on Hermes 2 high-bay luminaires for lamps rated from 150W-400W is contained in the following Data Sheets:-

PL 1867 (this sheet)

PL 1868 - Hermes 2 pre-wired gear boxes 150W-400W.

PL 1869 - Photometric information on Hermes 2: 150W-400W lamps.

PL 1870 - Accessories for use with Hermes 2 high-bay luminaires.

Complete information on Hermes 2 high-bay luminaires for lamps rated from 700W-1kW is contained in the following Data Sheets:-

PL 1870 - Accessories for use with Hermes 2 high-bay luminaires

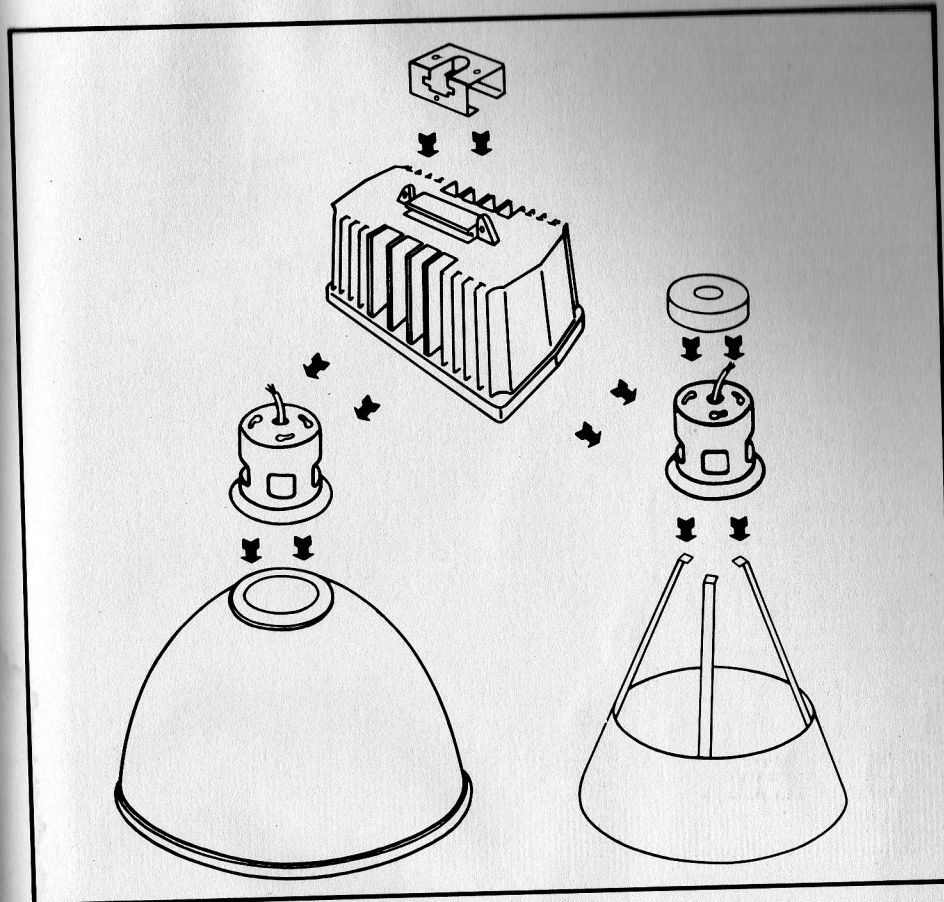
PL 1871 - General information on Hermes 2 high-bay luminaires for lamps rated from 700W-1kW.

PL 1872 - Hermes 2 pre-wired gear boxes 700W-1kW.

PL 1873 - Photometric information on Hermes 2: 700W-1kW lamps.

Lamp: Made in UK.

Luminaire: Made in UK.



Note:
UK Marking = Philips
International Marking HPI
UK MBF = HPL-N
MBFR = HPL-R

Specification

Degrees of Protection:

Gear box IP54;

To specify state:

- Industrial high-bay luminaire with adjustable lampholder to permit any light distribution to be set before or after installation and pre-wired cast aluminium gear box with the Degree of Protection IP54. Similar to Philips Hermes 2.

Range of Operation

240V 50Hz supplies.

Normal indoor and outdoor applications.

Materials & Finish

Gear box: Pre-wired with potted ballasts, housed in corrosion-resistant aluminium alloy casting with integral cooling fins.

Reflector, reflective skirt and lampholder assembly: Aluminium.
Lampholder: Porcelain GES.

Dimensions & Weights

Catalogue No.	Description	Dimensions (mm)			Weight (kg/lb)
		L	W	H	
R.0010	Concentrating/dispersing reflector	270	170	200	7.5/16.5
R.0020	Reflective skirt	345	276		1.1/2.4
W.0001	Wireguard	8	544		0.6/1.3
W.0002	Makrolon dust cover	15	544		1.0/2.2
W.0003	Mounting terminal plate	30	120		0.1/0.2

STOP PRESS

CI/SFB	(63.9)
UDC	696.6:628.94

HERMES 2

Pre-wired gear box 150W-400W

A range of 5 pre-wired cast alloy gear boxes, containing potted ballasts, for use with high-pressure sodium lamps 150W-400W, mercury fluorescent lamps 250W-400W and 400W mercury halide lamps. The gear boxes also form an integral part of Hermes 2 high-bay luminaires 150W-400W.

Range

- S.1500 (150W SON)
- S.2500 (250W SON, 250W SON-R)
- S.4000 (400W SON, 400W SON-R)
- H.2500 (250W HPL-N, 250W HPL-R)
- H.4000 (400W HPL-N, 400W HPL-R)
- H.4000 + PFC Kit P.0000/1 for 400W HPI/V
- H.4000 + Ignitor Kit P.0000/2 for 400W HPI/H

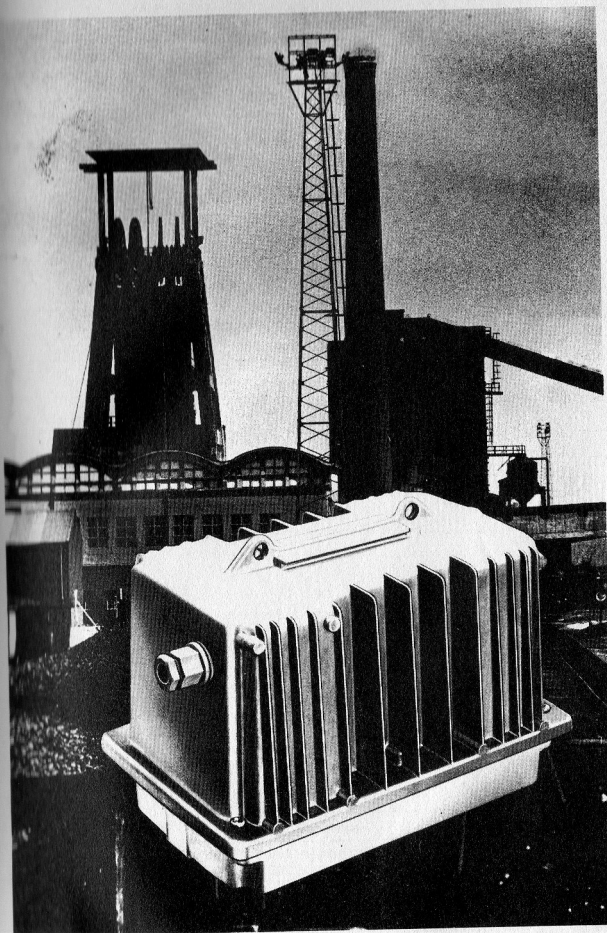
Applications

For use with Hermes 2 high-bay luminaires, mounted either remotely or integrally to the luminaire, in situations such as:-

- Stores and warehouses
- Foundries and drop forging plants
- Factory production areas
- Railway and bus termini
- Loading bays
- Hypermarkets and Cash & Carries
- Indoor sports complexes

Also for use with Philips remote-gear luminaires in a wide range of applications, including:-

- Area floodlighting (with HNF001, HNF003, W5000, NLF011 and NNF010 luminaires)
- Stadia floodlighting (with HNF001, HNF003, HNF006 and NNF010 luminaires)
- Security lighting (with HNF001, HNF003, NLF011 and NNF010 luminaires)



Handbook Ref.

2.3.2.

To reorder this data sheet quote PL 1868

Replaces

NEW

DISCHARGE FITTINGS

Features

- Sturdy, high-grade aluminium alloy housing for outdoor and aggressive indoor environments. The gear box has the Degree of Protection IP54.
- Pre-wired and factory tested for easy, labour-saving installation.
- Low wattage losses from high-quality components reduce energy waste.
- Rated for ambient temperatures up to 45°C – excellent performance with high-bay luminaires mounted over hot factory processes.
- Remote or integral use with high-bay luminaires – the control gear can be located in the most convenient position.
- Easy high-bay installation – the hinged lid gives ready access to the simple wiring and supports the lamp-holder assembly while connections are being made.
- Available for use with the full range of Philips mercury fluorescent (HPL-N) and high-pressure sodium (SON) lamps; also for 400W mercury halide lamps (HPI/H and HPI/V)

Data Sheet Reference

Information on Hermes 2 pre-wired gear boxes for high-pressure sodium and mercury fluorescent lamps rated from 700W to 1kW is contained in Data Sheet PL 1872

Complete information on Hermes 2 high-bay luminaires is contained in the following Data Sheets:–

- PL 1867 – General information on Hermes 2 high-bay luminaires for lamps rated from 150W–400W.
- PL 1868 – (this sheet)
- PL 1869 – Photometric information on Hermes 2: 150W–400W.
- PL 1870 – Accessories for use with Hermes 2 high-bay luminaires.
- PL 1871 – General information on Hermes 2 high-bay luminaires for lamps rated from 700W–1kW.
- PL 1872 – Hermes 2 pre-wired gear boxes 700W–1kW.
- PL 1873 – Photometric information on Hermes 2: 700W–1kW.

Materials & Finish

Gear box housing: Corrosion-resistant aluminium alloy casting with integral cooling fins.

Components: Pre-wired, with potted ballast and high-quality components.

Specification

Degree of Protection IP54.

Range of Operation

240V 50Hz supplies.

Normal indoor and outdoor applications.

Ordering Data

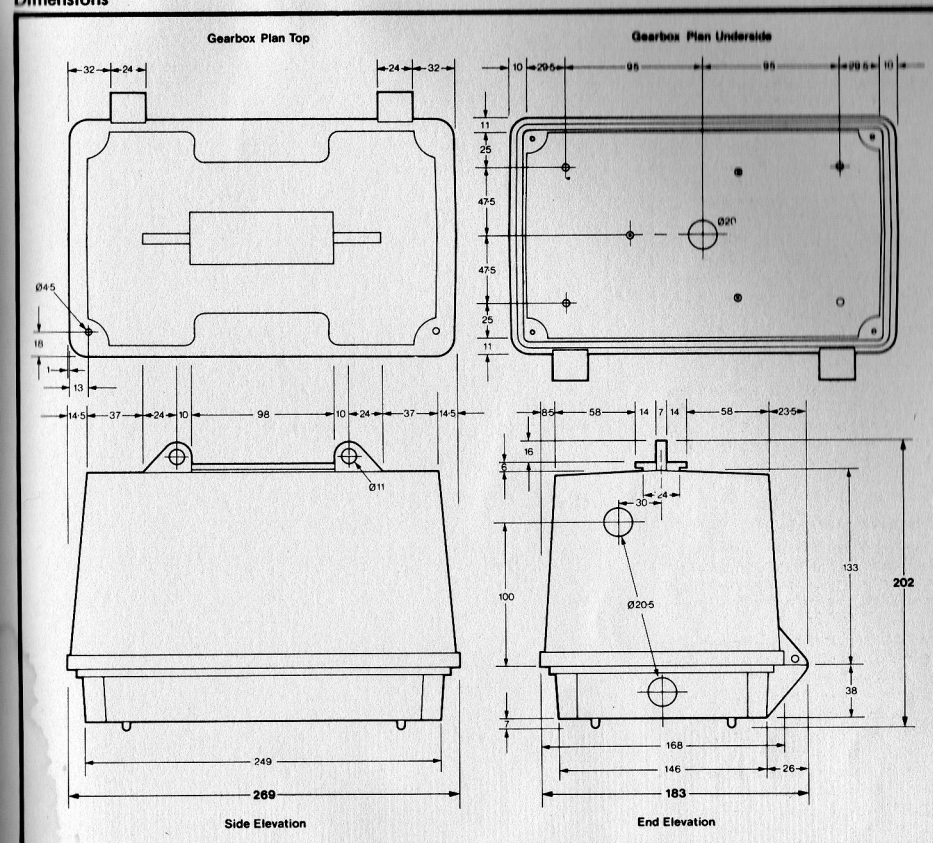
Catalogue No.	Description
S.1500	Gear box for 150W SON lamp
S.2500	Gear box for 250W SON & SON-R lamps
S.4000	Gear box for 400W SON & SON-R lamps
H.2500	Gear box for 250W HPL-N & HPL-R lamps
H.4000	Gear box for 400W HPL-N & HPL-R lamps
H.4000 + PFC Kit P.0001	Gear box for 400W HPI/V lamp
H.4000 + Ignitor Kit P.0002	Gear box for 400W HPI/H lamp

Notes: All items are individually packed.

Please order in the form given in the following example:–
6 Philips pre-wired gear boxes S.2500

Gear boxes for integral use with Hermes 2 high-bay luminaires are called up by a composite ordering code that also specifies the luminaire and accessories. Details are included in Data Sheets PL 1867 and 1871.

Dimensions



Weights & Electrical Data

Catalogue No.	For lamp type	Lamp Voltage V	Lamp Current A	Circuit Current Start	Circuit Current Run	Total Circuit Watts	Weight (kg/lb)
S.1500	150W SON	100	1.8	1.2	0.9	174	8/15
S.2500	250W SON & SON-R	100	3.0	1.8	1.3	280	7.5/16.5
S.4000	400W SON & SON-R	105	4.4	3.2	2.2	440	8.7/19.1
H.2500	250W HPL-N & HPL-R	135	2.0	2.1	1.3	268	6.0/13.2
H.4000	400W HPL-N & HPL-R	140	3.2	3.5	2.1	424	7.1/15.6
H.4000 + PFC Kit P.0001	400W HPI/V	125	3.4	3.3	1.9	424	7.2/15.8
H.4000 + Ignitor Kit P.0002	400W HPI/H	125	3.4	3.3	1.9	424	7.3/16.0