

Installation and Wiring Instructions for

PRECINCT FITTING

THORN

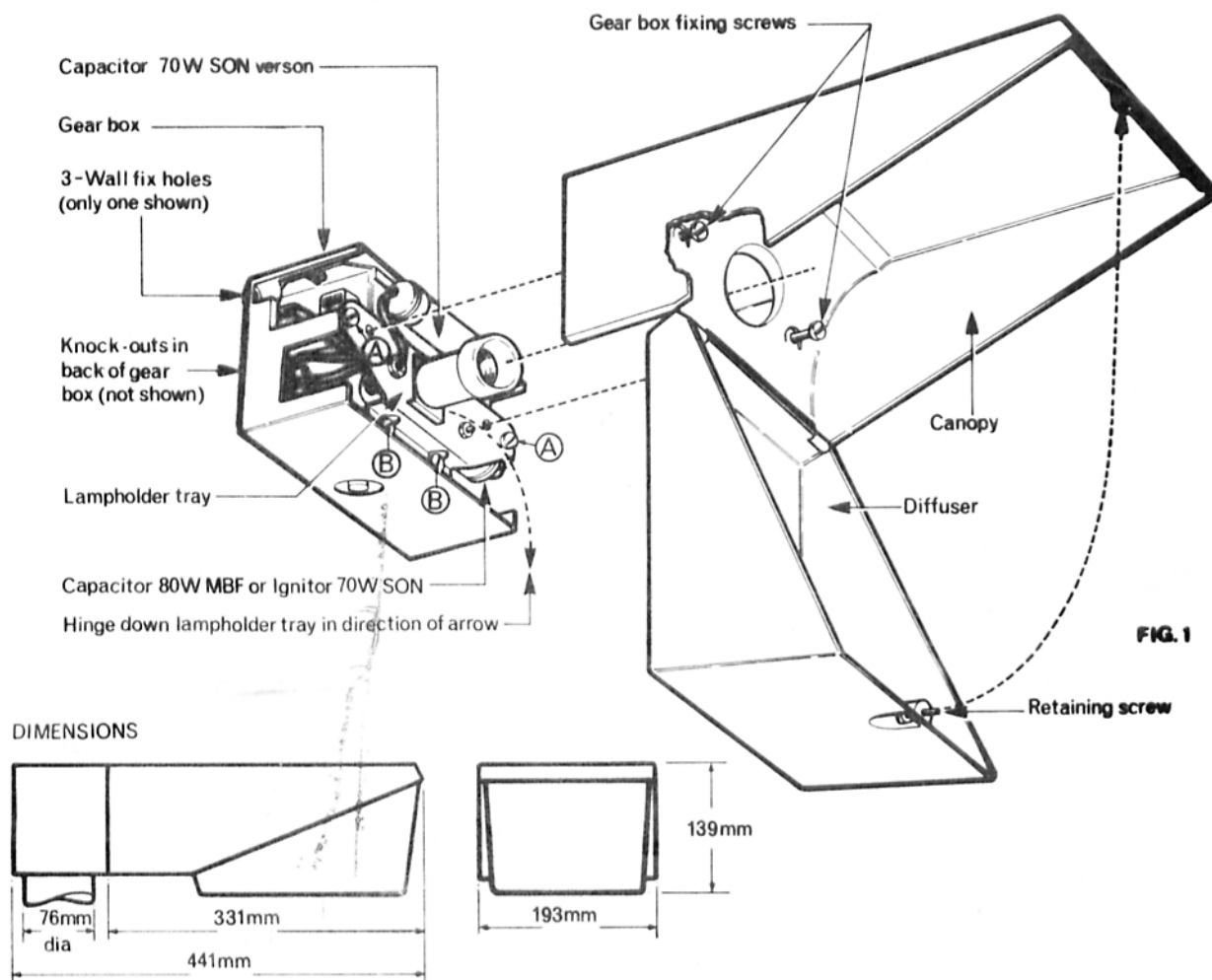


FIG. 1

The fitting is supplied with lamp unless marked 'LL'. Control gear is wired to lampholder ready for connection to incoming mains. For reliable performance in all conditions, high-temperature mains cable is preferred.

IMPORTANT

Different control gear is used for 70W SON & 80W MBF. The correct lamp **MUST** be used as detailed on the label inside the fitting.

Lamp wattages are not interchangeable.

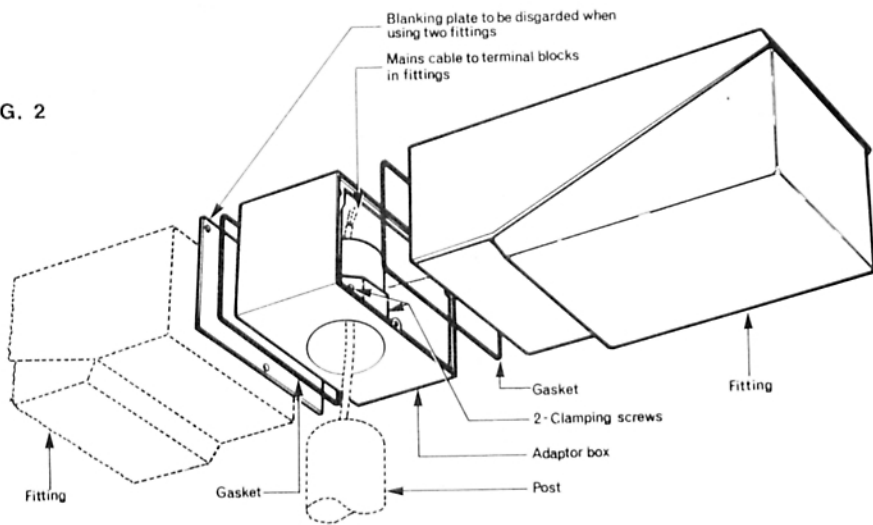
INSTALLATION WALL MOUNTING VERSION Fig. 1

1. Release diffuser by unfastening single Retaining Screw, hinge open and remove lamp.
2. Remove two gear box fixing screws in back of canopy and detach gearbox.
3. Remove the two screws 'A' and slacken screws 'B' in lampholder tray.
4. Hinge down tray and remove Capacitor or Ignitor from clip. Do not disconnect.
5. Mark off three holes on wall for fixing.
6. After drilling and plugging fixing holes, feed cable through appropriate knock-out, through cable clamp and connect to **terminal block** and earth terminal.
7. Fix gear-box securely to wall.
8. Check choke is wired for correct voltage.
9. Replace capacitor and screw back gear tray.
10. Screw canopy.
11. Insert lamp and test.
12. Fix diffuser in position with Retaining Screw.

IN THE UNLIKELY CASE OF BOWL REPLACEMENT THE FOLLOWING PROCEDURE SHOULD BE ADOPTED.

1. Tap hinge pins further into the diffuser and remove.
2. The new diffuser should be put into position and roll pins inserted and tapped flush with casting surface.

FIG. 2



POST TOP VERSION Fig. 2.

1. Feed cable through adaptor at top of 3" O/D Post and secure adaptor to post by means of clamping screws.
2. Ensure rubber gaskets are fitted before mounting gearbox, and in the case of an adaptor with two fittings, remove blanking plate and ensure cable to each lamp is fed through appropriate sides of adaptor.
3. Follow procedure for 'Wall Mounting' version (1) (2) (3) and (4).
4. Feed cable through knockout in gear box.
5. Screw gear box(s) to adaptor with set screw provided, ensuring that gasket(s) is correctly located.
6. Fix cable by cable clamp and connect to terminal block and earth terminal. Follow procedure for 'Wall Mounting' version (7).

MOUNTING

Recommended mounting height: 3-6m. Recommended column QC4 or QC3 both with QCS 76 and OCA 1/2.

COMPLIANCE WITH BS 4533 and IEC 598

This luminaire complies with BS 4533:3.3

Luminaires for which safety-mark approval has been granted by British Standards Institution are identified by a suitable label on the product.

CLASSIFICATION FOR PROTECTION

Against electric shock: Class 1

Against ingress of dust or moisture: IP 23 Rainproof.

OPERATING CONDITIONS

In the interests of safety, it is essential that the mains supply is disconnected before re-lamping or servicing this luminaire.

LAMP

One 70W SON, or 80W MBF.

RANGE DETAILS

Cat. No.	Description	Approx Wt (kg)
Luminaires complete with control gear and lamp (unless marked LL)		
OC 1080	80W MBF Precinct c/w gear	4.1
OC 1070.T	70W SON Precinct c/w gear	4.9
OCA 1/2	Adaptor mounting	1.59

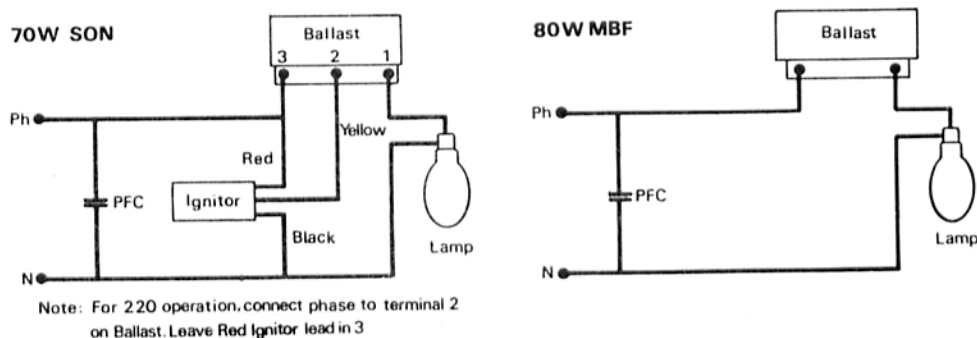
REPLACEMENT ITEMS

OCV	Vandal resistant bowl	0.23
GL 1194	Lampholder	0.11

REPLACEMENT CONTROL GEAR

G 53333.2	80W MBF 220V 50Hz
G 53333.4	80W MBf Choke (240V) 50Hz
G 53320.T	70W SON Choke (220/240V 50Hz)
G 53353/4	70W SON Ignitor
GC 2382	80W MBF/70W SON Capacitor

CIRCUIT DIAGRAMS



The right is reserved to change specifications without prior notification or public announcement.