



Faber

STREET /
INTERIOR
LIGHTING
CONTROL
Q4ACD

RTE/Q4ACD

The RTE/Q4A is a photo-electric control unit designed to control either internal or external lighting loads, where adjustable levels are required between 40 and 1500 Lux.

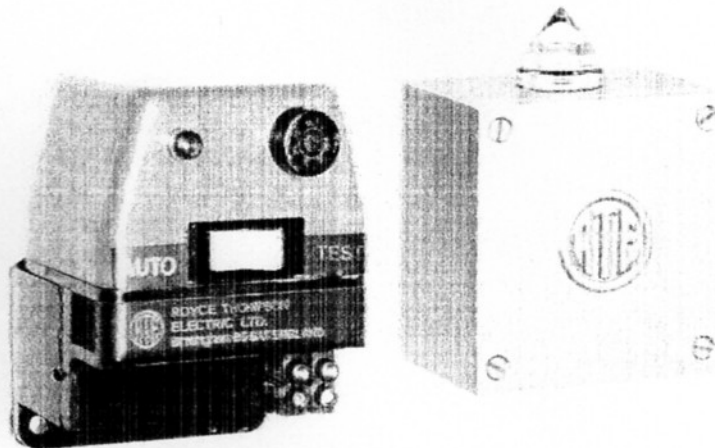
Typical applications are passages and stairways, balconies, outside floodlighting or any application where it may be necessary to adjust lighting levels to meet individual requirements

The Q4A unit can be used with the waterproof Die Cast Detector with no filters as illustrated or with the waterproof Miniature Detector as illustrated with the Q4/Q4N Unit

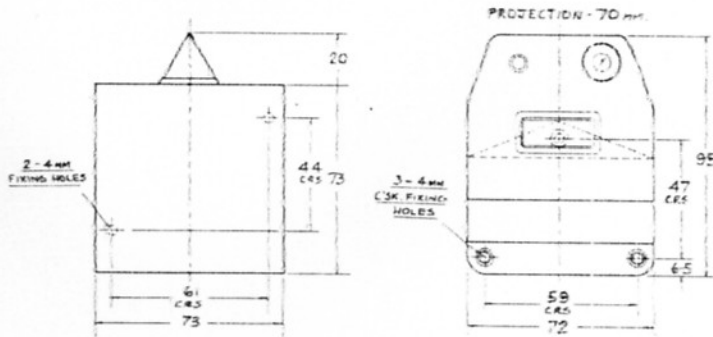
Specification:

- Voltage range 180/260v AC 50Hz.
- Maximum load 5 amps lamp load. 10 amps pure resistive.
- Temperature range -15°C to +60°C.
- Close switching differential 1 — 1.5
- 2 Year Guarantee.

Auto/test switch mounted on front of unit. Easy single potentiometer adjustment. Full installation and setting up details supplied with each unit.



Can also be used with miniature detector as used with RTE/Q4



WARNING

Note that when first switched on, these units will energise the lamp circuit, and lamp holder contacts will therefore be "live" until the unit has switched off in daylight. **INSULATION TESTING BY "MEGGER"** can be carried out on circuits including photo-electric cells, but not continuity tests, as the high voltage used may damage the cell.

ROYCE THOMPSON ELECTRIC LTD



320 CHEAPSIDE
BIRMINGHAM B5 6AX - ENGLAND
Tel: 021-622 7441/2/3