

# SS4E (Nema Fixing) & SS54E (Two Part)

The Zodion SS4E one part electronic photo control is the simplest unit in the range of Zodions. This particular unit has been developed and introduced as a direct result of BS 5972 1980.

The performance/load requirements of BS 5972 1980 are such that any basic thermal photo electric control is stretched towards the limits of its capabilities. The conflicting requirements of switching differential and load switching requirements can under certain operating conditions give cause for concern.

The introduction of a relatively simple electronic circuit (for a very modest increase in cost) ensures a performance and expected accurate life capability in excess of the BS 5972 1980 requirements.

A clear U.V. Inhibited polycarbonate cone ensures that the Zodion SS4E is instantly recognisable from the standard SS4 thermal unit.

The Zodion SS4E has a lower differential @ 1 to 1.5 positive.

The SS54E is a two version with the same specification and performance as the SS4E.

The Zodion SS4E will have a longer more accurate life because calibration is not dependent upon the mechanical adjustments of the thermal relay. Minor variations to the relay caused by age or local ambient conditions do not affect the accuracy.

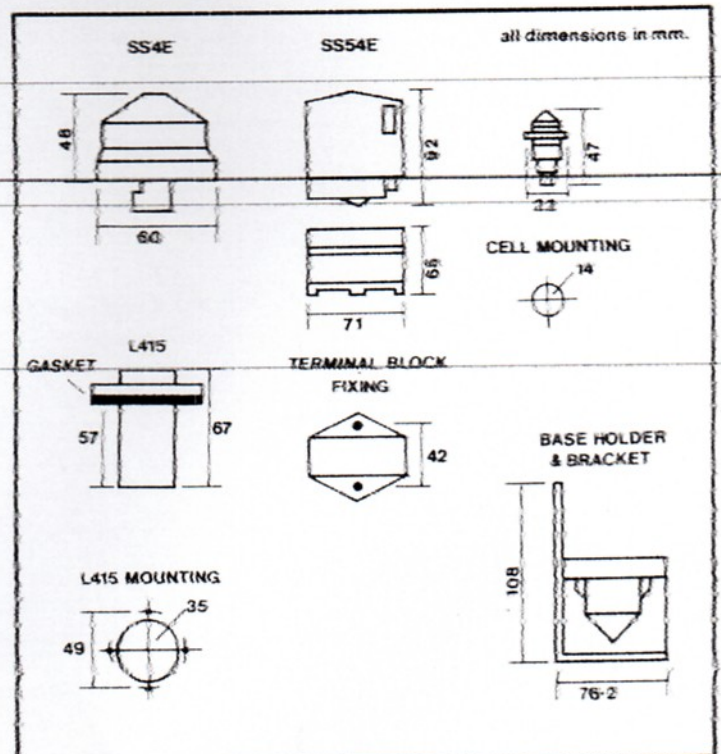
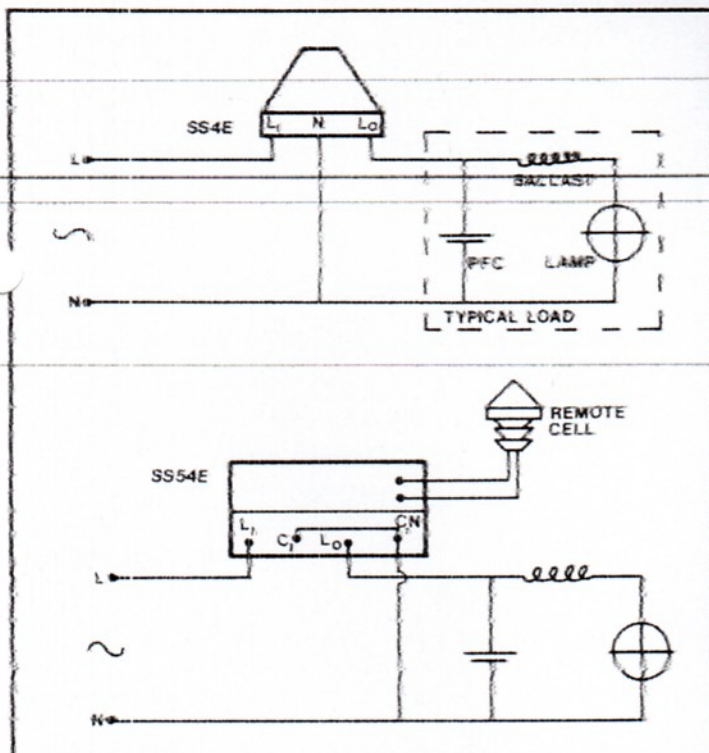
Time delay to prevent spurious switching is built in. Load switching contact gap is increased to maximum.

## SPECIFICATION

SPECIFICATION	SS4E/SS54E
TYPE	Electronic Thermal Relay Load Switching
VOLTAGE RANGE 50/60Hz	198-264 VAC.
SWITCH-ON LEVEL LUX.	Standard 70 or 75
SWITCHING DIFF.	Max 1:1.5 pos.
TYPICAL LOAD	2x 250 Watts H.P.S.
TEMPERATURE RANGE	night _____ -20°C day _____ +55°C

## LOAD SWITCHING CAPACITY

CURRENT	5 Amps
MAX. POWER FACTOR CORR.	60 MFD.
TYPICAL SWITCHING DELAY	60 Secs.
ENCLOSURE MATERIAL	Polycarbonate
POWER CONSUMPTION	Light _____ 3 Watts Dark _____ Zero



Illustrations and specifications are not binding in detail. The designs are subject to modification and improvement without notice.

# FKI

## FKI Cableform Ltd.

Gratrix Works, Gratrix Lane, Sowerby Bridge, West Yorkshire, HX6 2PH  
Phone: (0422) 833533, Telex: 51122 FKICAB G, Fax: (0422) 834375