

SS4 (Nema Fixing) & SS54 (Two Part)

The SS4 1 part thermal control gives maximum benefit at minimum cost. Standardisation of contact pins allows interchangeability with other makes and therefore the freedom of purchase from any source giving the most beneficial price or delivery.

The thermal switch is produced in-house and has a substrate heater fixed in such a way as to give reliability and maximum operating efficiency. Solid silver contacts are used for load switching, careful factory adjustment gives low switching differential and long contact life. The SS4 plugs into the L415 or any other Nema specification socket. The unit can be produced to different specifications for example with Lighting Arrestor.

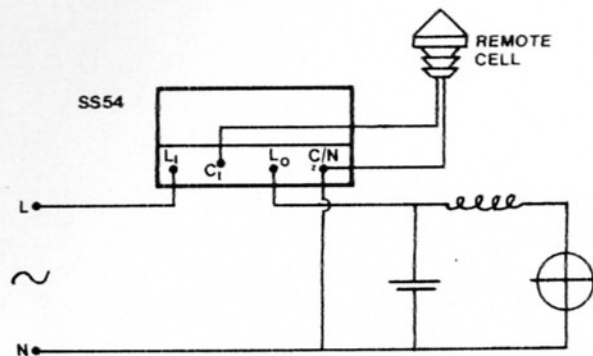
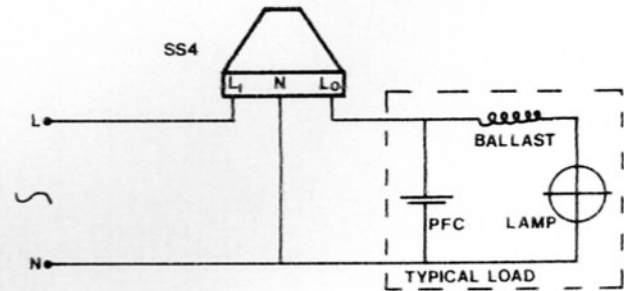
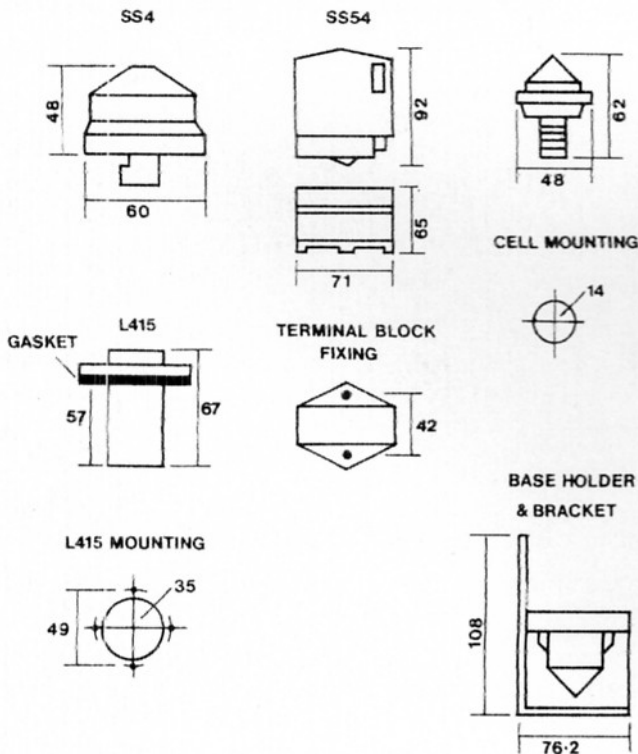
All the mouldings are polycarbonate and the cones are U.V. inhibited.

The SS54 2 part thermal control features a plug-in relay control unit. Cell and relay calibration allow for complete interchangeability. Contact pin centres now allow for interchangeability with certain other terminal blocks. Glass encapsulated cadmium sulphide cells are used as standard on all Zodion 2 part units.

SPECIFICATION	SS4/SS54
TYPE	Thermal
VOLTAGE RANGE 50/60Hz	240 VAC $\pm 6\%$
SWITCH-ON LEVEL LUX.	Standard 70 or 55
SWITCHING DIFF.	Max 1:3 pos.
TYPICAL LOAD	2x250 Watts H.P.S.
TEMPERATURE RANGE	night -20°C day $+55^{\circ}\text{C}$

LOAD SWITCHING CAPACITY	
CURRENT	5 Amps
MAX. POWER FACTOR CORR.	60 MFD.
TYPICAL SWITCHING DELAY	60 Secs.
ENCLOSURE MATERIAL	Polycarbonate
POWER CONSUMPTION	Light 3 Watts Dark Zero

all dimensions in mm.



illustrations and specifications are not binding in detail. The designs are subject to modification and improvement without notice.



FKI Cableform Ltd.

Gratrix Works, Gratrix Lane, Sowerby Bridge, West Yorkshire, HX6 2PH
Phone: (0422) 833533, Telex: 51122 FKICAB G, Fax: (0422) 834375