

# SS8 (Nema Fixing) SS52 (Two Part) & SS52V (Two Part variable)

A one part negative ratio electronic control incorporating several benefits not found on the more basic types of photo-electric control.

The heavy duty double pole magnetic relay allows for increased load switching. The negative switching ratio ensures the most economical use of energy. In the control of discharge lighting it is necessary to switch the load earlier to allow for 'run-up' time. The load is switched off immediately a safe light level is reached, this is in effect at a lower level than the switch-on point. (Standard setting—switch-on 70 LUX, switch-off: 35 LUX). Accurate calibration with a long, trouble free field service life: minimises maintenance and replacement costs.

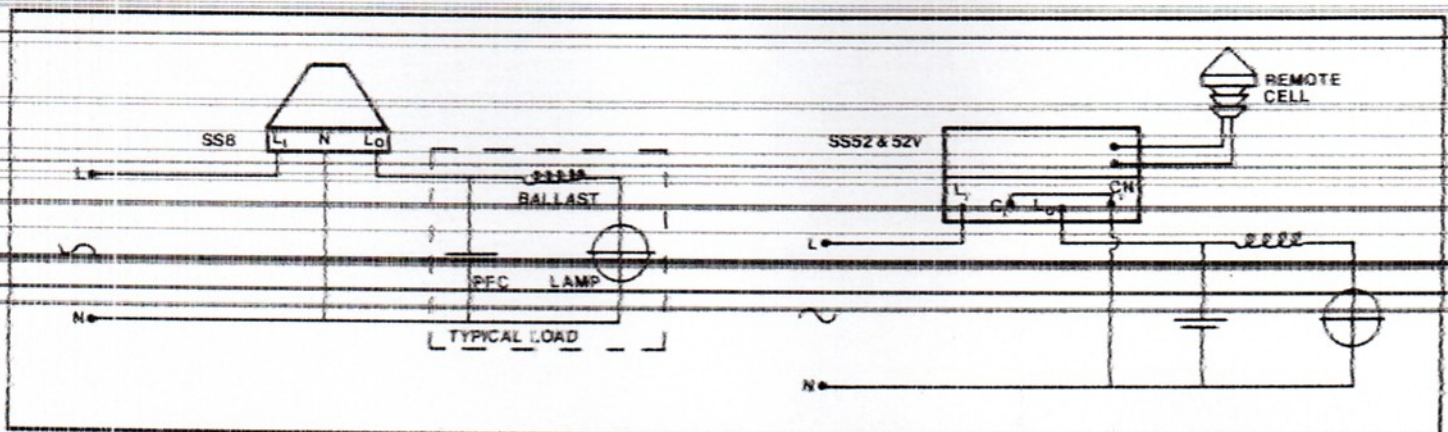
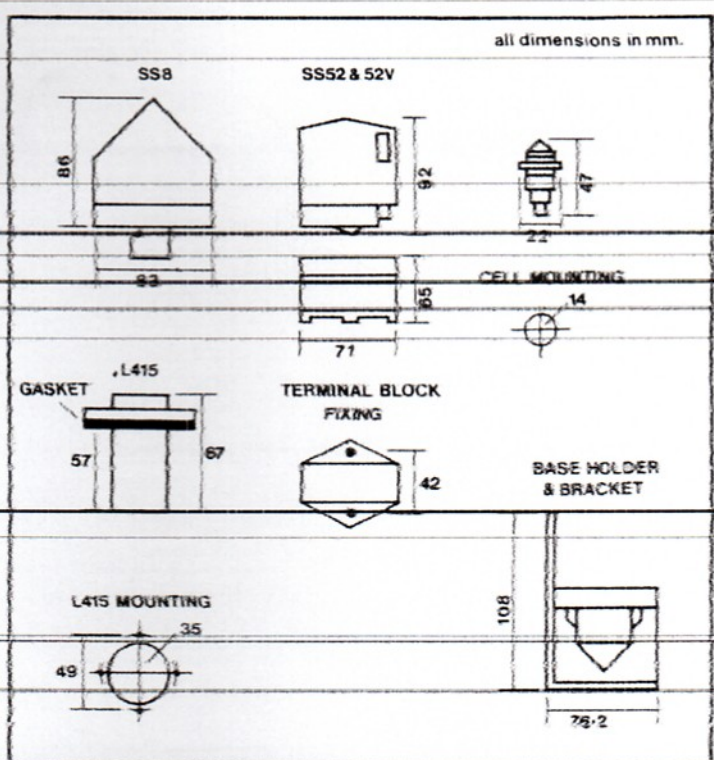
These units are unaffected by low voltage supply.

SS52 is a 2 part electronic control which also incorporates the heavy duty double pole magnetic relay mechanism for increased load switching but with a fractional positive ratio (1:1.5), with manual override facility.

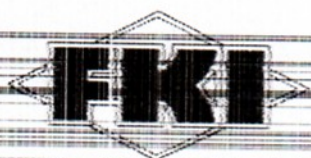
The small overall size of the remote cadmium sulphide sensing head allows for effective control in difficult situations.

A variable version of the above known as the Zodion SS52V, is produced especially for those situations where local adjustment of the switching level is necessary for the accurate control of integrated or internal lighting systems. The switch-on level may be varied between zero and 3000 LUX, one spare can therefore cover for many controls.

MODEL	SS8	SS52	SS52V
TYPE	Electronic Electromagnetic Relay Load Switching	Electronic Electromagnetic Relay Load Switching	Electronic Electromagnetic Relay Load Switching
VOLTAGE RANGE 50/60Hz	198 - 264 VAC	198 - 264 VAC	198 - 264 VAC
SWITCH ON LEVEL LUX	Standard 70	Standard 70 or 35	10-2000 Variable
SWITCHING DIFF.	1:0.5 neg.	Max. 1:1.5 pos.	Max. 1:1.5 pos.
TYPICAL LOAD	3x250 Watts H.P.S.	3x250 Watts H.P.S.	3x250 Watts H.P.S.
TEMP. range	night -20°C day +55°C	night -20°C day +55°C	night -20°C day +55°C
LOAD SWITCHING CAPACITY CURRENT	10 Amps	10 Amps	10 Amps
MAX. POWER FACTOR CORR.	90 MFD.	90 MFD.	90 MFD.
TYPICAL SWITCHING DELAY	5 Secs.	5 Secs.	5 Secs.
ENCLOSURE MATERIAL	Polycarbonate	Polycarbonate	Polycarbonate
POWER light CONSUMP. dark	4.2 Watts 0.7 Watts	3.8 Watts 0.15 Watts	3.8 Watts 0.15 Watts



Illustrations and specifications are not binding in detail. The designs are subject to modification and improvement without notice.



**FKI Cableform Ltd.**

Gratrix Works, Gratrix Lane, Sowerby Bridge, West Yorkshire, HX6 2PH  
Phone: (0422) 833533, Telex: 51122 FKICAB G, Fax: (0422) 834375