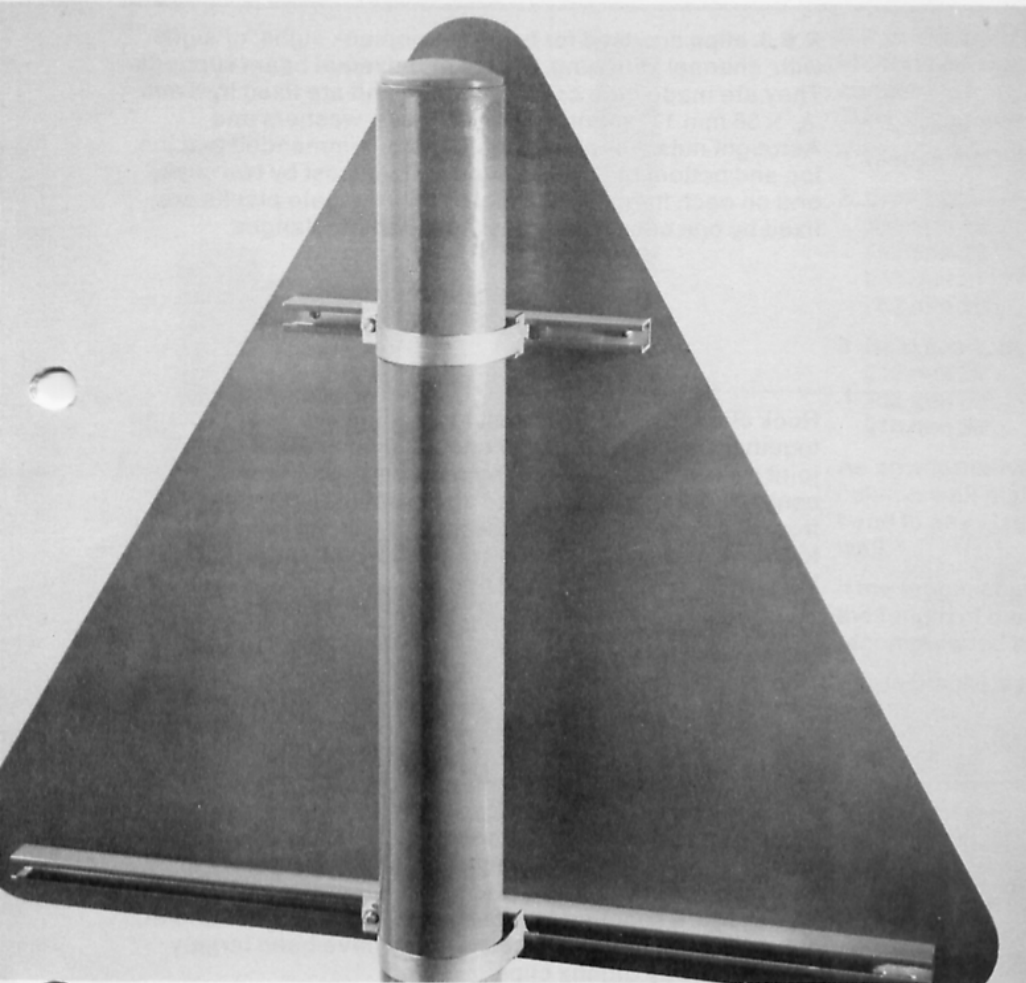


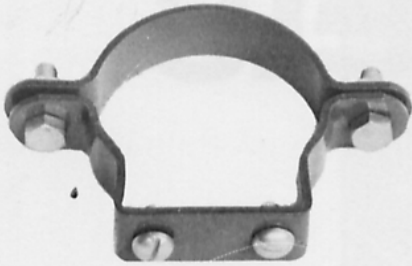
CI/SfB
12

Bergo clips, brackets and sign mounting equipment



Clips and Brackets

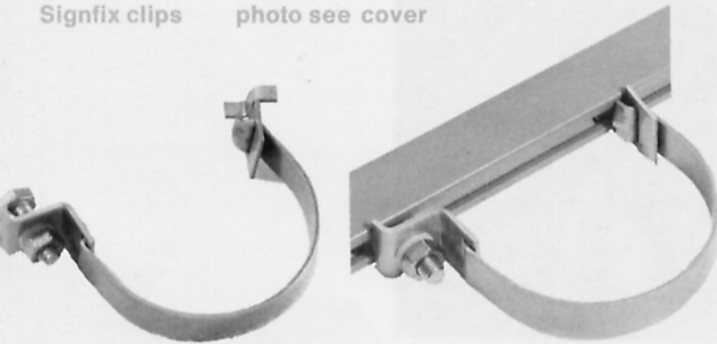
Uniclips photo see cover



Uniclips are used for fixing small signs without channel stiffeners to tubular steel posts. They are also used for fixing back-mounted internally illuminated signs. They are available for 60 mm $2\frac{3}{8}$ " , 76 mm 3" , 89 mm $3\frac{1}{2}$ " and 114 mm $4\frac{1}{2}$ " diameter posts. Made from 3 mm x 25 mm m.s. strip sherardised and stove enamelled grey. The two halves of the clip are bolted together by 8 mm $\frac{5}{16}$ " x 25 mm 1" hex headed screws and nuts, and the signplate is fitted to the clip by two 8 mm $\frac{5}{16}$ " x 12.5 mm $\frac{3}{2}$ " round headed screws. The clip is drilled and tapped at 38 mm $1\frac{1}{2}$ " centres. All screws and nuts are stainless steel unless otherwise ordered.

Where signs are to be mounted back to back on the same post, two tapped halves of the clip are used together to form a 'back-to-back' clip.

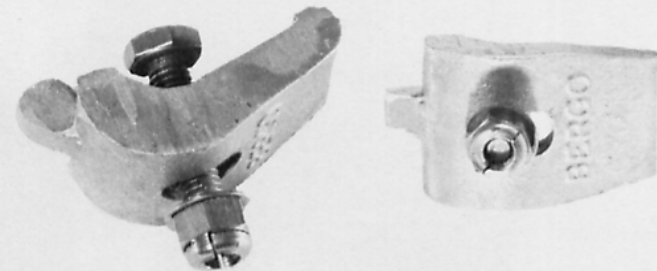
Signfix clips photo see cover



Signfix clips are designed for use in conjunction with aluminium channel stiffeners for all signs which require stiffening. They are also used for fixing plank signs to tubular steel posts, r.h.s., or concrete posts.

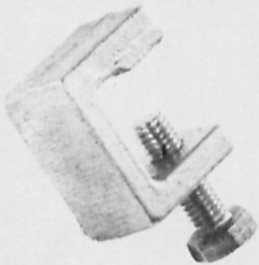
Signfix clips are made from 2 mm and 1.5 mm stainless steel, and require only one stainless steel screw and nut to secure the sign to the post. Special designs of Signfix clip are available for back-to-back fixing, and for securing signs to larger supports. Signfix channel straps for concrete posts incorporate Expamet 19 mm $\frac{3}{4}$ " stainless steel band and buckles - formerly known as Tespa.

RSJ clips photo see back cover



R.S.J. clips are used for fixing Bergoplank signs, or signs with channel stiffening, to r.s.j. or universal beam supports. They are made from cast aluminium and are fixed by 8 mm $\frac{5}{16}$ " x 38 mm $1\frac{1}{2}$ " stainless steel screws, washers and Aerotight nuts. For plank signs, it is recommended that the top and bottom planks are fixed to each post by two clips, one on each flange, and that the intermediate planks are fixed by one clip to each post, on alternate flanges.

Hook clamp



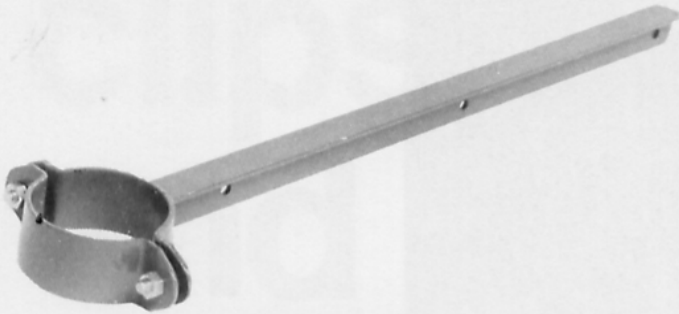
Hook clamps made from cast aluminium are used to clamp together adjacent planks to ensure a close fit of the 'V' joint between the planks. The recommended spacing is centrally between posts, and approximately 100 mm 4" from each vertical edge of the sign. It will not generally be found necessary to use hook clamps where the length of the planks is less than 1500 mm 5'0".

FB bracket photo see back cover



F. B. Brackets are used for fixing framed signs to tubular posts. They are of welded construction, made from mild steel with three slotted holes for bolting to the sign frame. The finish is zinc sprayed and stove enamelled grey. F.B. Brackets are supplied for posts up to 168 mm $6\frac{5}{8}$ " diameter, subject to availability of stocks. They have been largely superseded by Signfix clips.

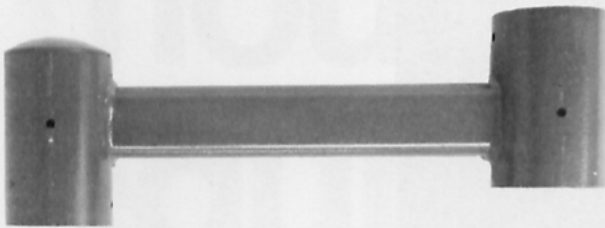
BSF bracket



B.S.F. Brackets are used for side mounting small pointer signs not exceeding 1500 mm 5'0" in length. They are made from m.s. tee section welded to half-clips of appropriate diameter, rustproofed and stove enamelled grey. B.S.F. Brackets are riveted to the top and bottom edges of the sign. Double-sided signs should have an additional grey strip 25 mm 1" wide so that the bracket does not obscure the border of the sign.

B.S.F. Brackets are also available with No 3 'C' Bracket for use with Expamet stainless steel band.

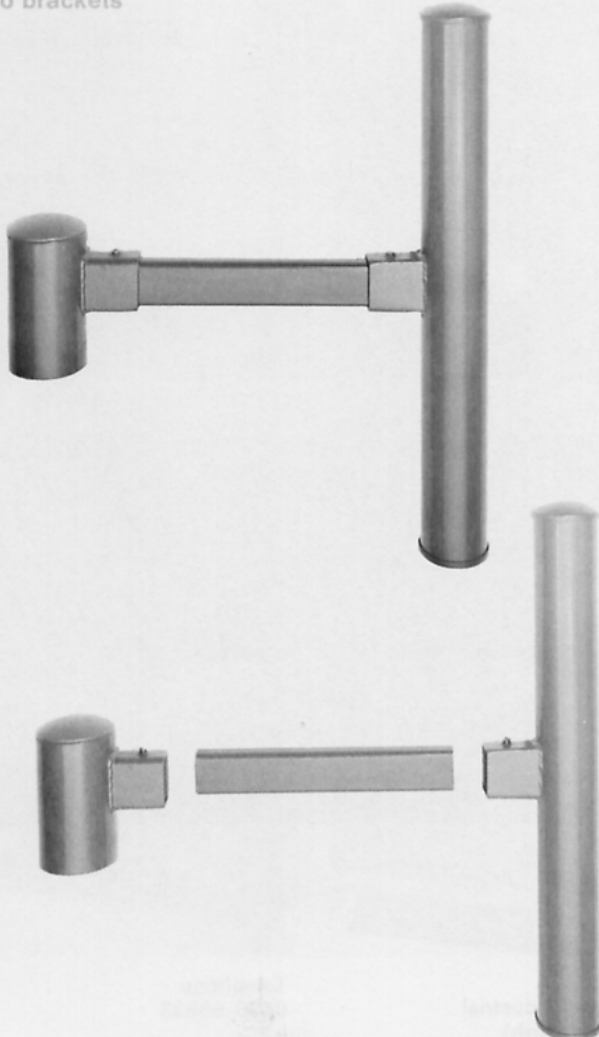
Bergodapta



Bergodapta Brackets are designed to give an offset of 381 mm 15" from a 76 mm 3" diameter post. The Bergodapta comprises two sleeves 140 mm 5½" long made from 89 mm 3½" diameter tube welded to a cross arm 300 mm 12" long made from flat oval section tube. One sleeve fits onto the supporting post and the other sleeve carries a length of 76 mm 3" tube to which the sign is fixed. The sleeves are fitted with key-headed set screws.

The finish is zinc sprayed and stove enamelled grey.

Haldo brackets



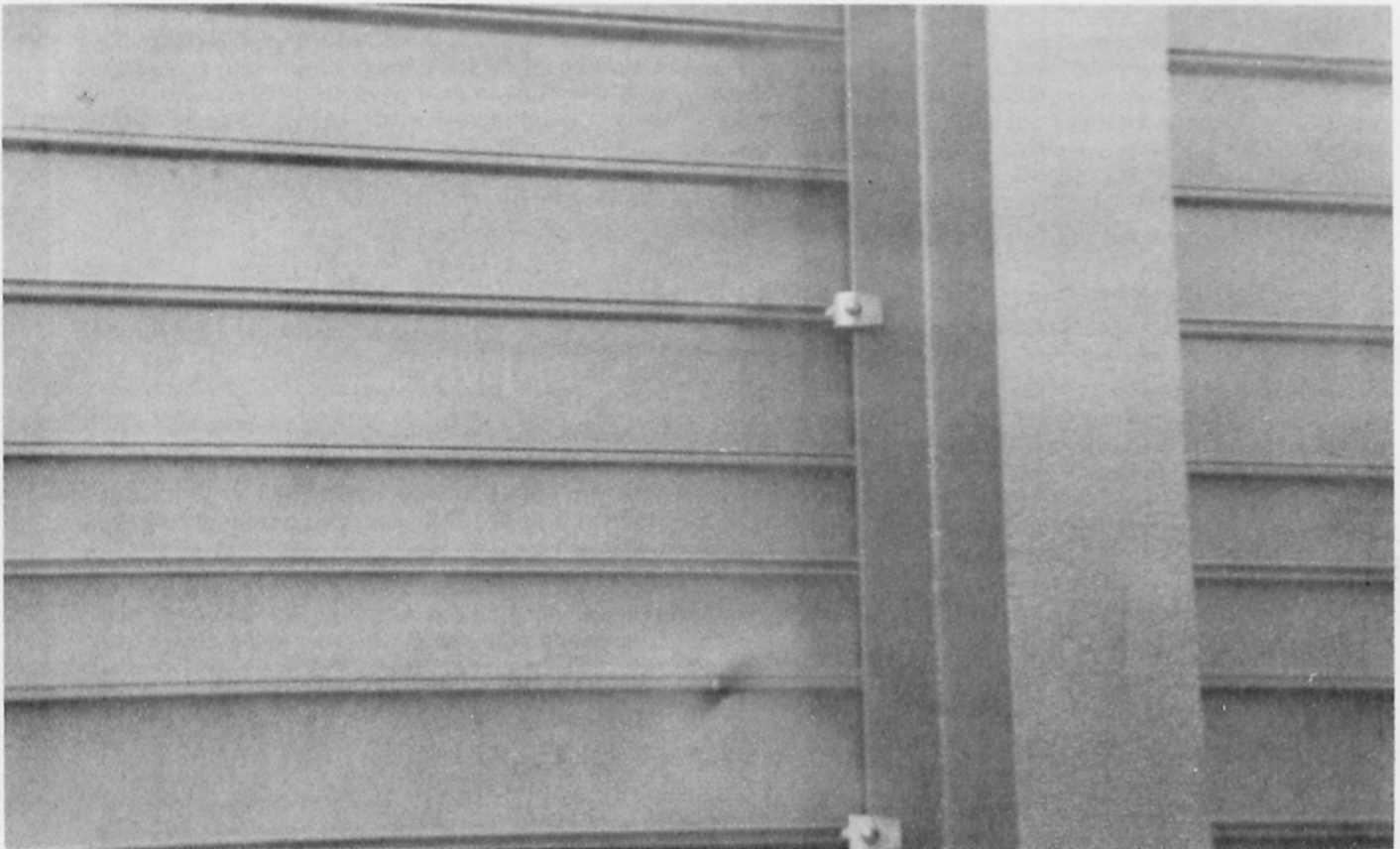
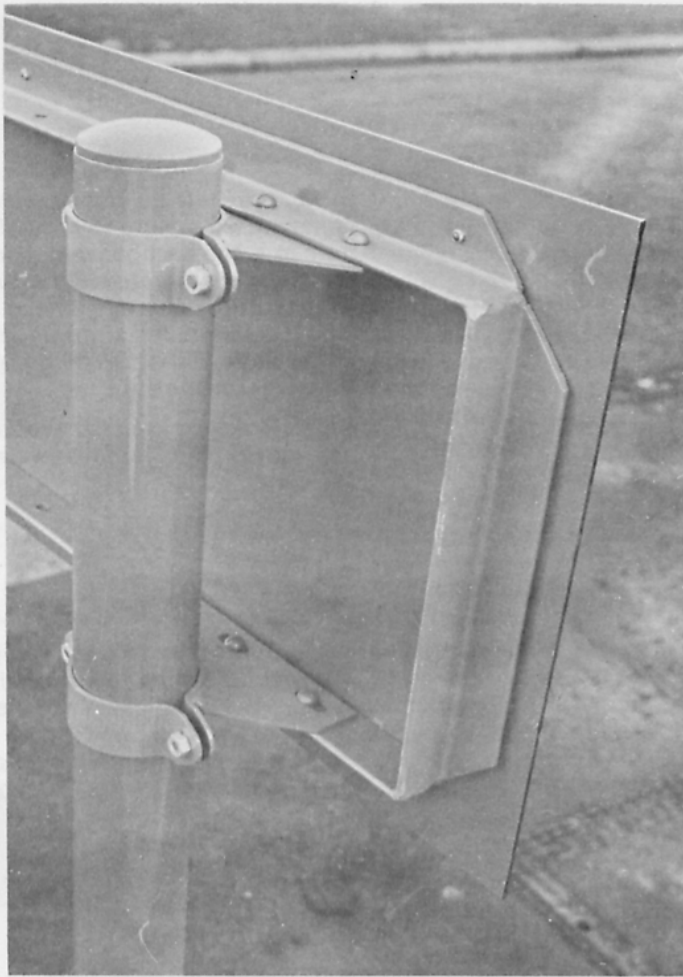
Haldo Tubular Offset Brackets are used for offsetting illuminated signs and can be supplied to suit varying conditions from an extensive range of standard units. They are assembled from the following basic components.

- 1 Sleeve mountings, to fit 76 mm 3" diameter posts.
- 2 Cross arms, in lengths of
305 mm 12".
457 mm 18".
610 mm 24".
762 mm 30".
- 3 Backposts, in lengths of
610 mm 24".
762 mm 30".
914 mm 36".

As an alternative to the sleeve mounting there is a lamp column wall plate which may be fixed by stainless steel band to any size or shape of post, or may be bolted to a wall.

If the length of an offset (crossarm) exceeds 610 mm 24" or the length of the backpost exceeds 914 mm 36" it is recommended that two crossarms and sleeves be used.

Haldo brackets are finished plastic coated P.V.C. grey.



The Expanded Metal Company (Mfg) Limited
Bergo Division

A subsidiary of The Expanded Metal Company Limited

PO Box 14
Longhill Industrial
Estate (North)
Hartlepool TS25 1PR

Telephone
0429-66633
Telex
58597