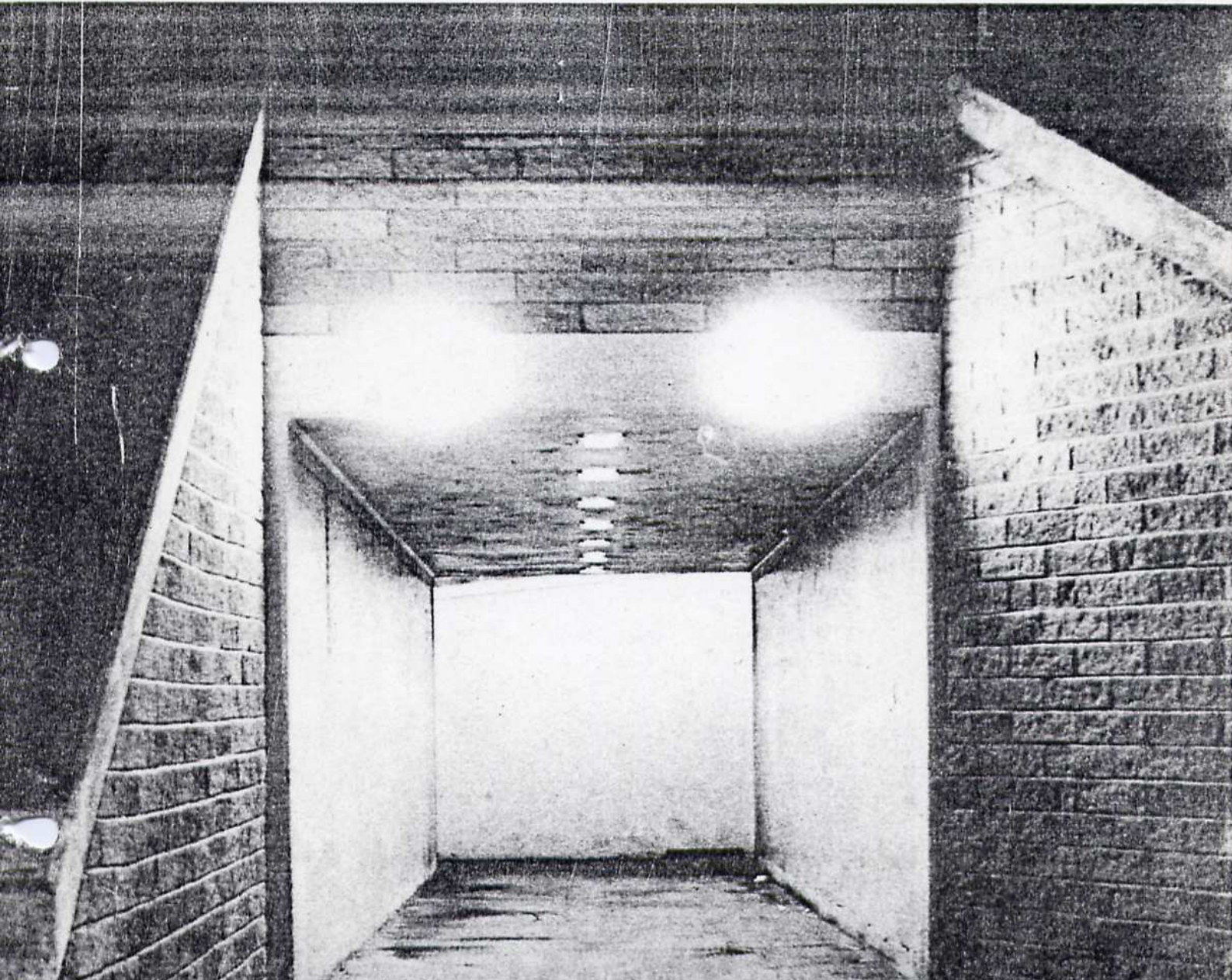


# Bergo subway lighting fittings

CI/SfB

(90.6)

Leaflet No. BD4a April 1980





# Bergo subway lighting fittings

Ref 38SP subway light

## Specification

**Front frame:** Size 451 mm x 178 mm 17 $\frac{3}{4}$ " x 7" made from cast aluminium, stove enamelled white.

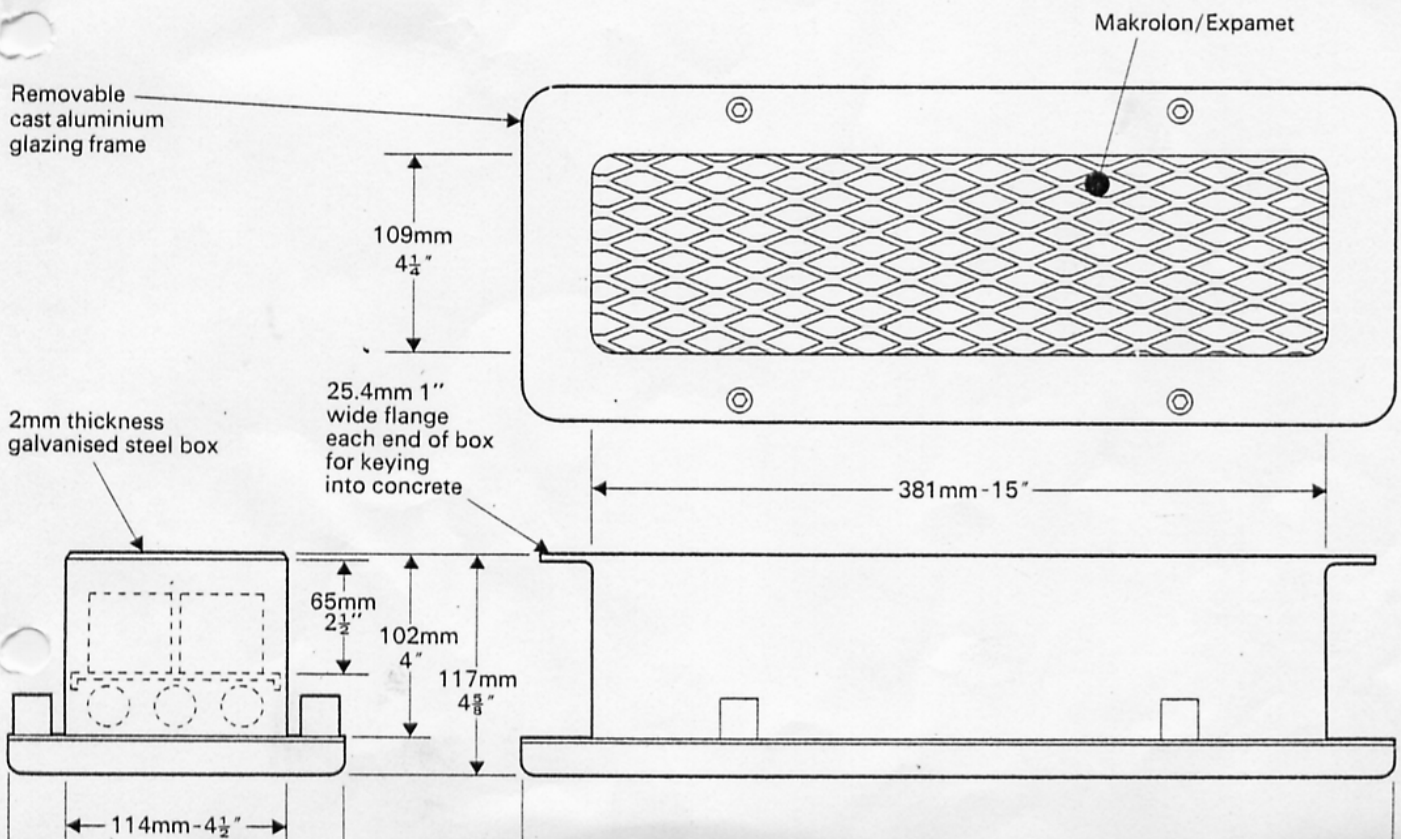
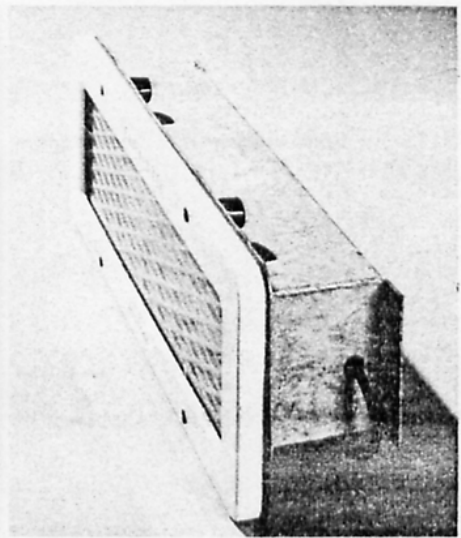
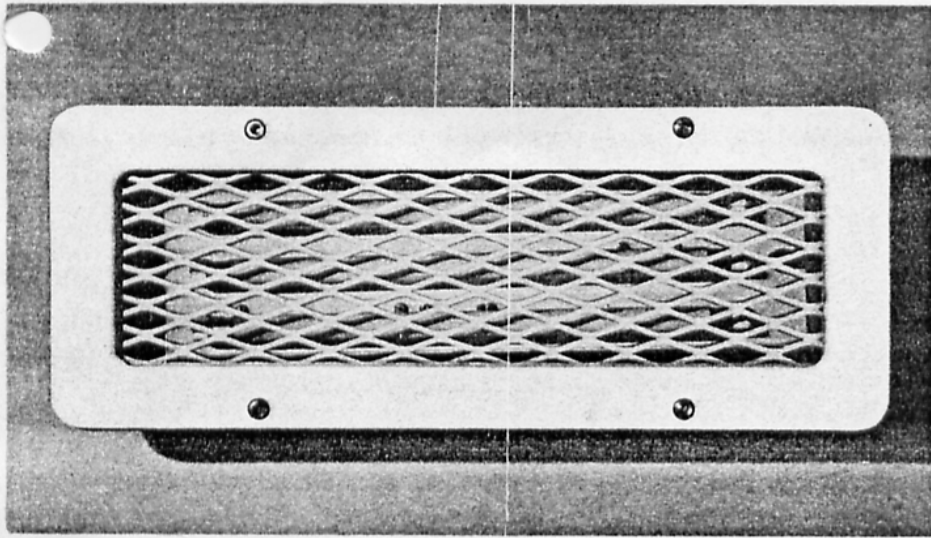
**Glazing:** Comprises a sheet of Makrolon polycarbonate 2mm thick backed by a protective panel of Expamet flattened expanded metal to provide a vandal resistant unit. The Makrolon is bedded in waterproof compound. Size of aperture is 387 mm x 108 mm 15 $\frac{1}{4}$ " x 4 $\frac{1}{4}$ ".

**Galvanised box:** Made from 2mm mild steel plate welded into a complete unit, with flanges for keying into concrete. The front frame is secured to the box with 8mm  $\frac{5}{16}$ " dia. stainless steel screws which are operated by special Allen keys.

**Lighting unit:** Comprises three 8 watt fluorescent lamps, two wired in series and one in parallel, complete with control gear housed in a sheet metal tray which is easily removable from the box.

Bergo subway lighting fittings are designed to give maximum protection against vandalism combined with easy access for servicing.

Effective lighting is provided by the two types available. Both types incorporate a galvanised box which is recessed into the concrete during the construction of the subway. Only the front frame projects below the ceiling level.



Ref 2202 subway light

**Specification**

As for the 38SP subway light with the following exceptions:

**Front frame:** 762mm x 267mm 30" x 10 1/2" size of aperture 641mm x 146mm 25 1/4" x 5 3/4".

**Lighting unit:** Comprises two 20 watt fluorescent lamps wired independently.

**Variations**

Using standard components of the two types of lighting unit described, Bergo can offer a number of variations in design for particular applications.

The standard box for the 2202 subway light is designed to be recessed into the ceiling or wall of the subway, as illustrated on front page.

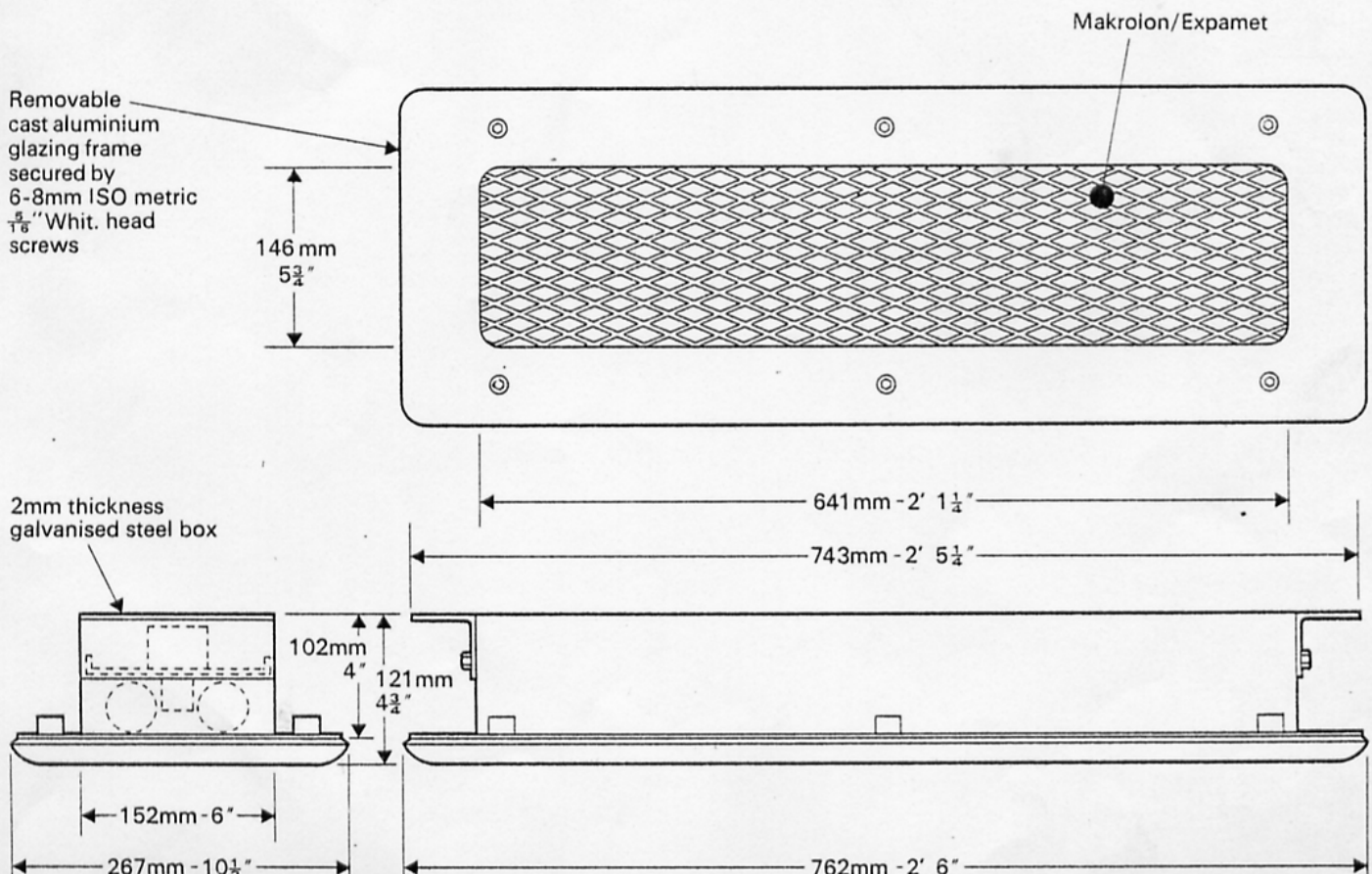
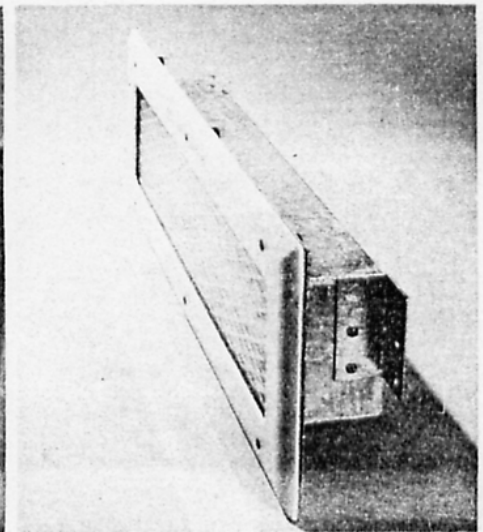
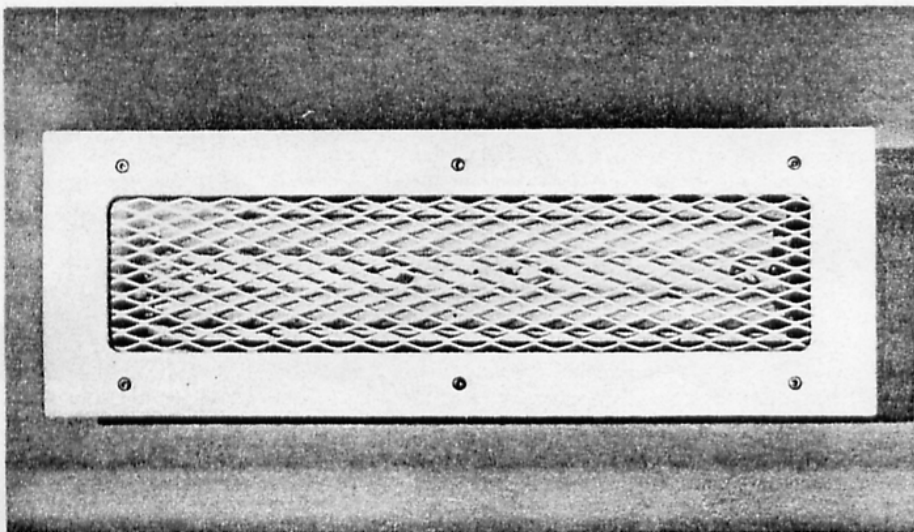
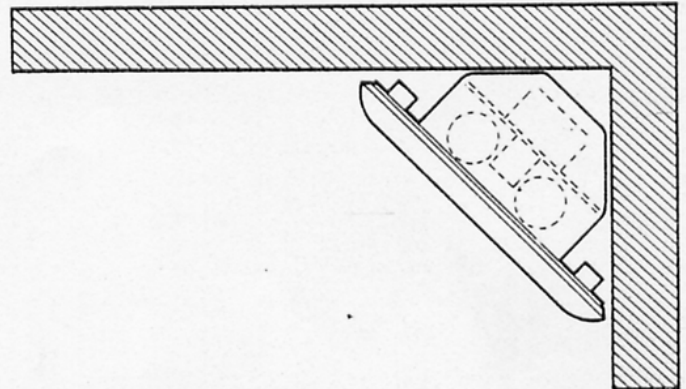
The box can, alternatively, be supplied with chamfered corners for fitting into a cornice.

This version uses the standard lighting unit and is referred to as the 2202C cornice subway light.

A special box can be supplied for surface mounting in which case the unit is known as the 2402B bulkhead light. A special lighting unit is supplied for this fitting, using two 40 watt lamps.

The standard 2202 subway light can be supplied with 40 watt lamps in lieu of 20 watt, in which case the unit is referred to as the 2402 subway light.

A bulkhead light version of the 38SP subway light is also available. This is referred to as the 38SPB bulkhead light.

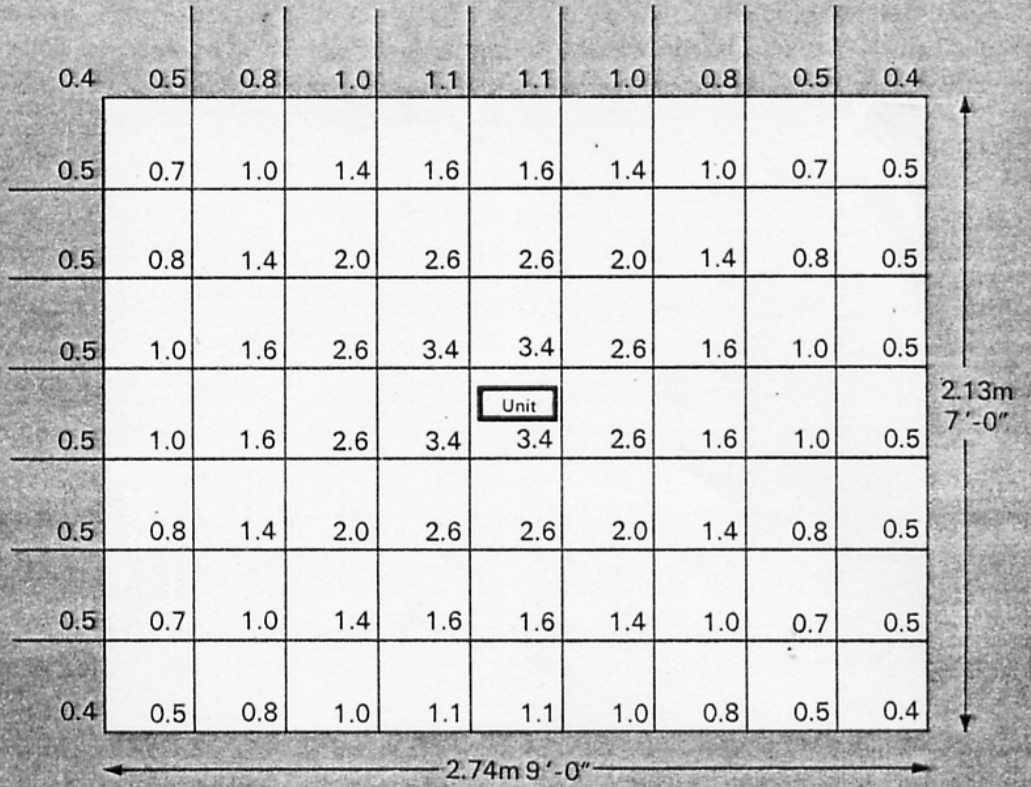




**Illumination chart for Bergo 8W subway light**

Illumination pattern in lumens per sq. ft. for Bergo Subway Light, incorporating 3-305mm 12" x 8W daylight fluorescent tubes, 2.44m 8'-0" above ground level.

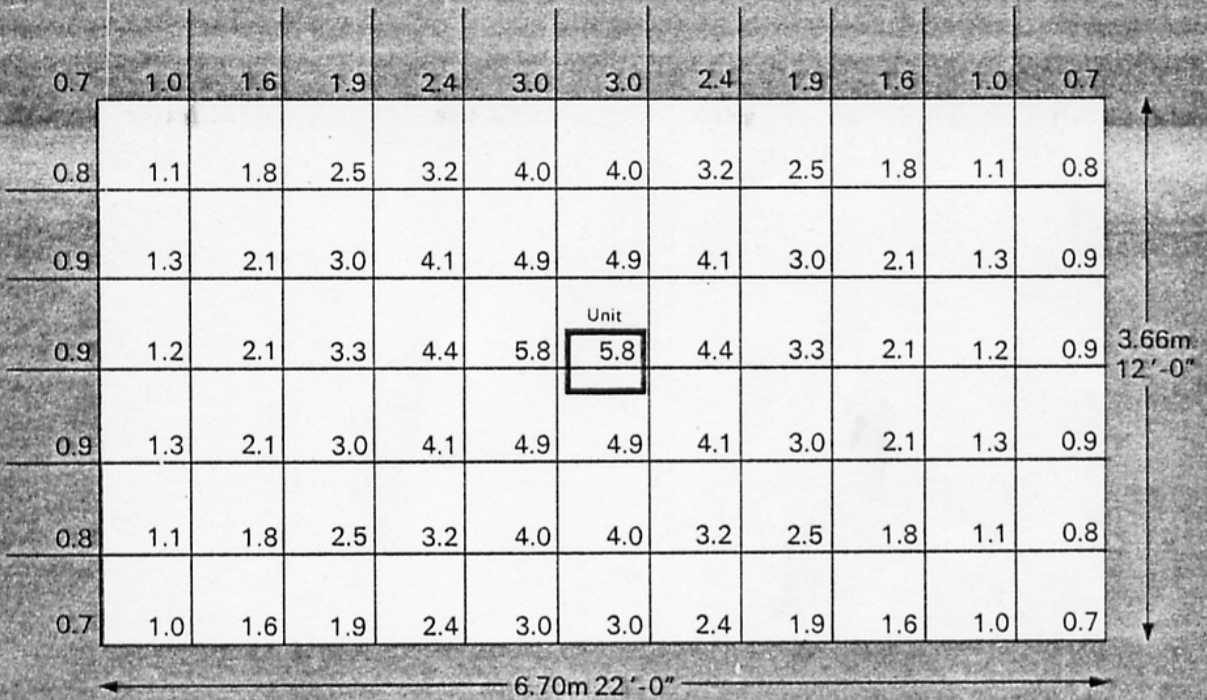
Figures above are for 'black' walls—light coloured walls would increase illumination. The illumination from adjacent units should be allowed for when calculating unit spacing.



Each square represents 1ft.

**Illumination chart for Bergo 20W subway light**

As for 8W Subway Light but 2.89m 9'-6" above ground level.



Each square represents 2ft.

The Expanded Metal Company (Mfg) Limited  
**Bergo Division**

A subsidiary of The Expanded Metal Company Limited

PO Box 14  
Longhill Industrial  
Estate (North)  
Hartlepool TS25 1PR

Telephone  
0429-66633  
Telex  
58597