



Telford mid hinged column shown with dw400 luminaire

# telford

This innovative product offers the greatest simplicity and safety for the maintenance of luminaires and column accessories. Its mid-hinged design means that the main shaft always remains upright during the lowering process and positions the fitting at the perfect height for access and maintenance.

To avoid vandalism, a range of vandal resistant features are included.

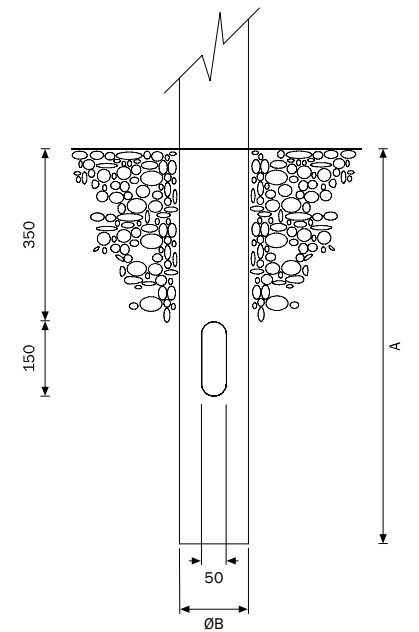
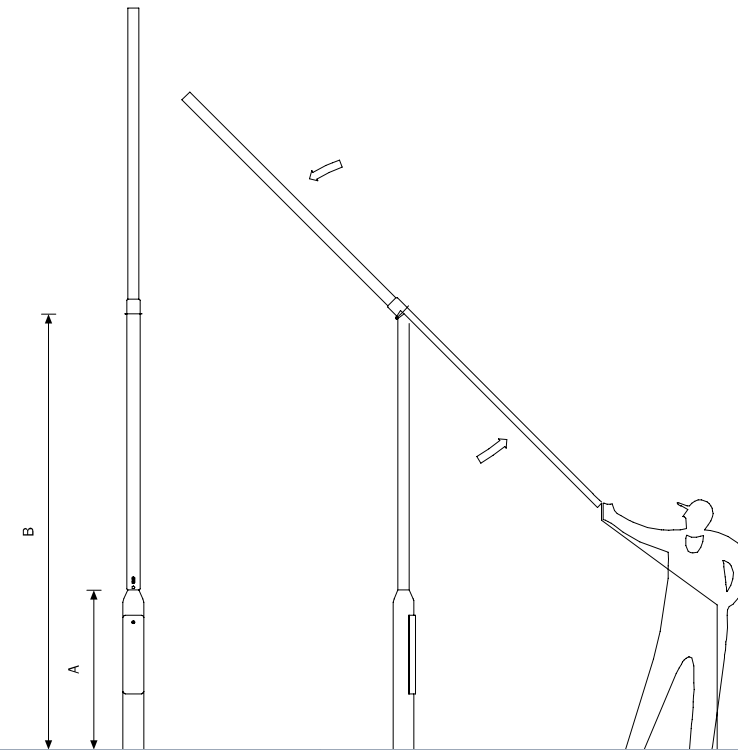
## key features

- Simple one person operation
- Offset hinge means column will not tip accidentally
- Quick and simple raising and lowering process using a rope and key set
- No winch required
- Separate door to allow access to base compartment without need to lower the column
- Tamper proof external screw access to hinge mechanism
- Additional internal locking device
- Large base compartment to house a choice of isolators, cut-outs and other equipment

## options

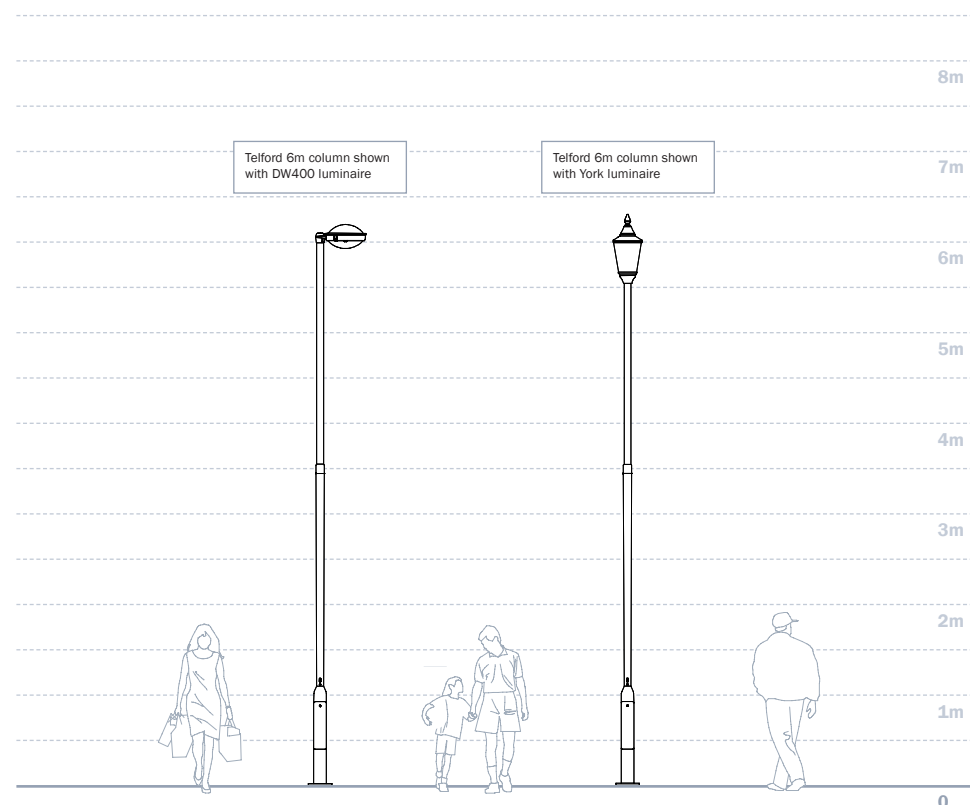
- Nominal height** 5m, 6m and 8m
- Mounting** Root or flange plate
- Finish** Hot dip galvanised to EN ISO 1461 or galvanised and primed in a grey micaceous iron oxide primer. G2a & G2b finishes are available to order. Can be supplied fully painted in a standard RAL colour
- Other** Engineered to suit a maximum head load of 20kg

## nominal root details

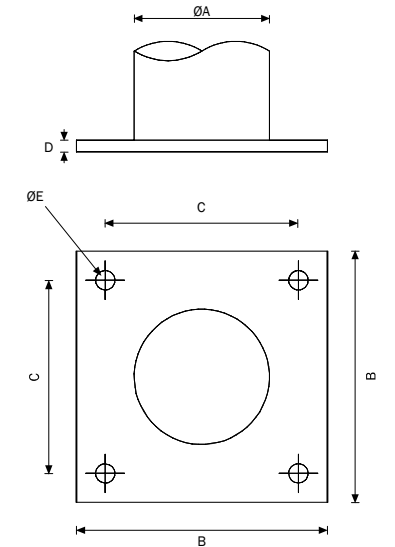


Dimensions (mm)			Dimensions (mm)		
Nominal Column Height	Shoulder height (A)	Pivot point height (B)	Nominal Column Height	Root length (A)	Root Ø (B)
5m	1075	3040	5m	800	139
6m	1075	3540	6m	1000	139
8m	TBA	TBA	8m	1200	193

## suggested column/luminaire configurations

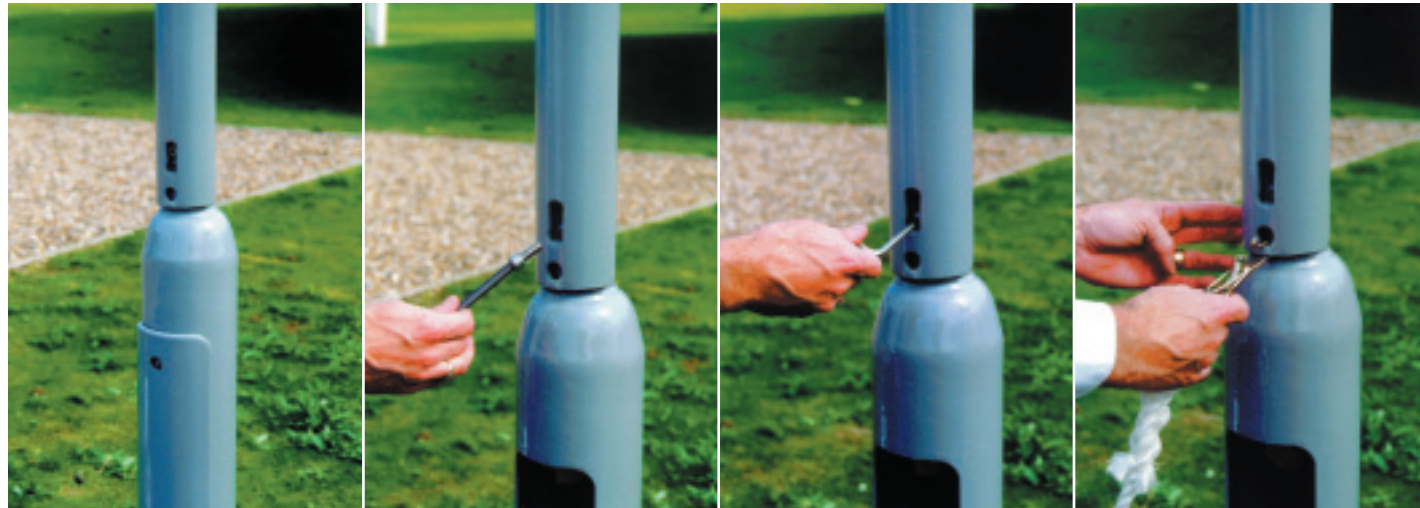


## flange plate details



Nominal Column Height	Dimensions (mm)				
	ØA	B	C	D	Slot E
5m	139	260	200	15	22×38
6m	139	260	200	12	22×38
8m	193	400	300	20	22×38

# telford mid-hinged column



The Telford mid-hinge column

Unfasten and remove door. Disconnect main electrical supply. Remove tri-head fixing bolt and retain for later assembly

Loosen captive anti-tamper screw, the column will open slightly, this is normal the column will not hinge at this point

Attach the control rope to the lower hole



Unlock the padlock if fitted (not supplied)

Remove padlock (not supplied)

Pull to release the security latch in base compartment and slide up latch on column shaft

WARNING the column is now free to move using the rope



Lift the column away from the base

The column can now be gently lowered. Tie off control rope on the 'T' bar in the base of the column

The luminaire can now be worked on

The column can now be hinged back to the vertical. Refasten and relock in the reverse order



**DW Windsor**  
L I G H T I N G

*style with performance*