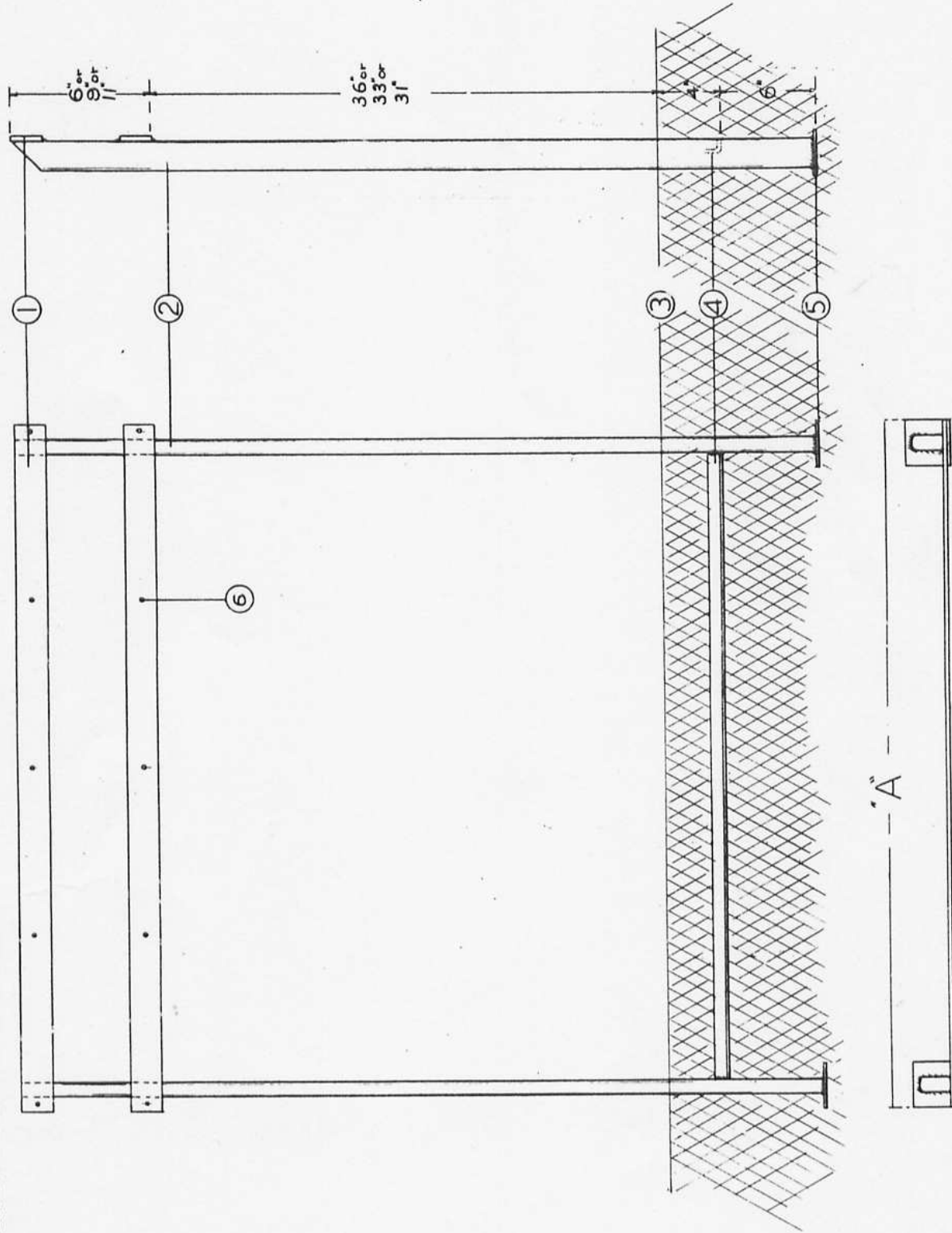


**PRODUCT**  
**INSTALLATION**  
**DETAILS**

Drawing Should Not Be Scaled... If In Doubt, Ask!



ITEM SCHEDULE

ITEM No.	DESCRIPTION	QTY	MATL	REMARKS
1	Support Bar	2	M.S.	2"x1/2"
2	Vertical Leg	2	"	2"x1" R.H.S.
3	Ground level			
4	Bottom Tie	1	"	1"x1/2"x1/2"
5	Baseplate	2	"	2"x2"x1/4"
6	Plate fixing holes	20		3/8" Dia. 8x-suit length
Finish Shot Blasted Hot zinc sprayed Epoxy coated				
Type	Dimension 'A'	Qty	Remarks	
A	24"	1	100% to 2x2 inch	
B	36"	2	" " 3x3 "	
C	36"	2	" " 3x3 "	
D	48"	2	" " 4x4 "	



Certificate No. FM 13963

REVISION	DATE	DESCRIPTION

DATE BY	DATE	1-4-68
SCALE		
DRG. NO.		S00016

ORDER NUMBERS AND QUANTITIES  
 ORDER No.      QTY      ORDER No.      QTY

FINISH

**SUBJECT**  
**STREET NAMEPLATE**  
**SUPPORT**

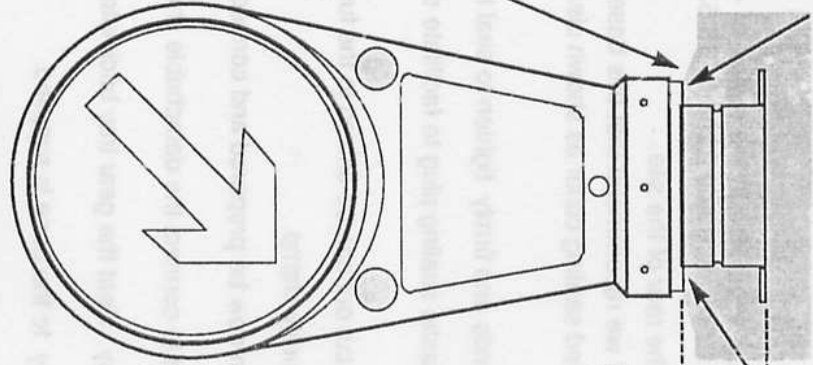
Triplex Engineering Limited.,  
 Upper church Lane, Tipton, West Midlands

# PDG1 BASELIGHT INSTALLATION

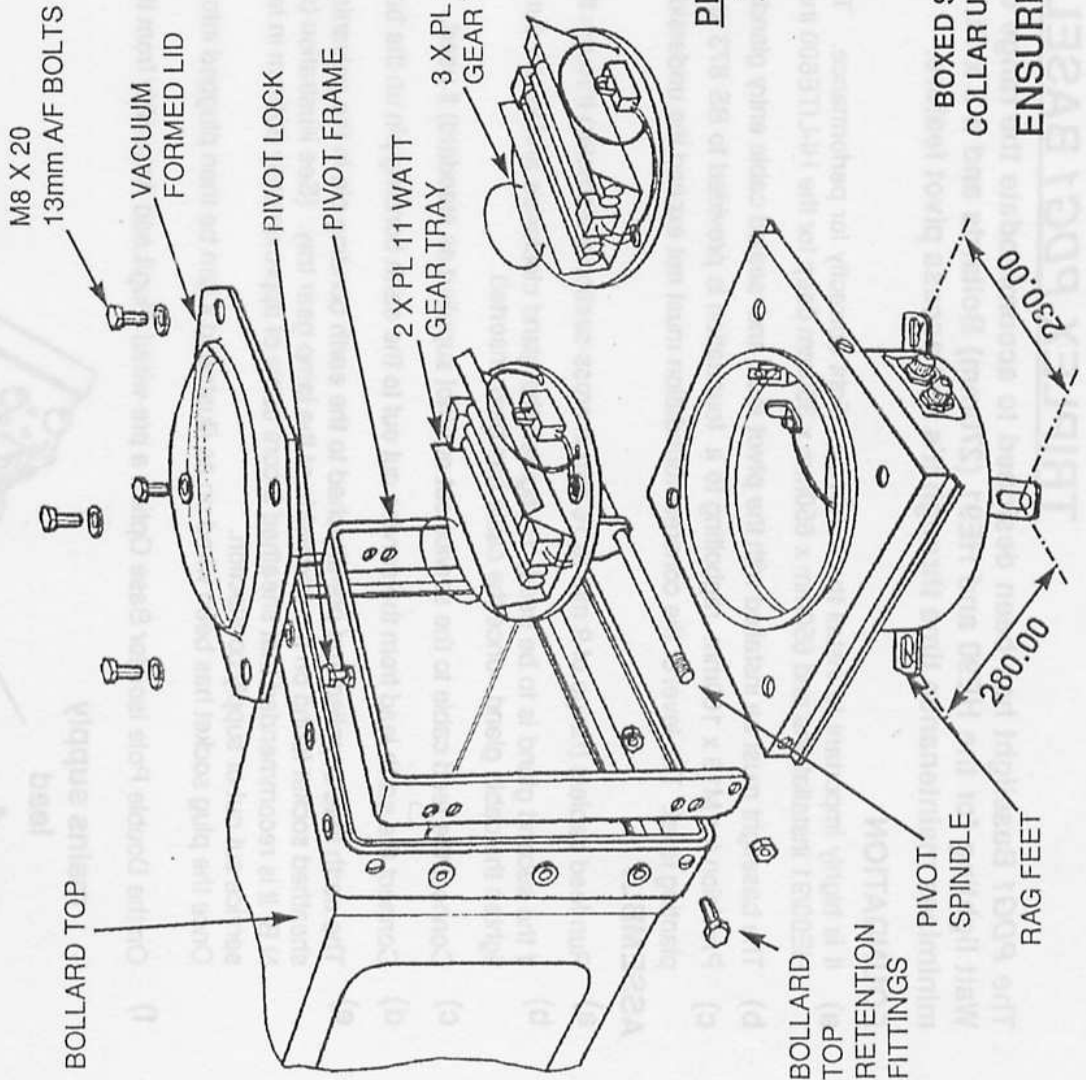
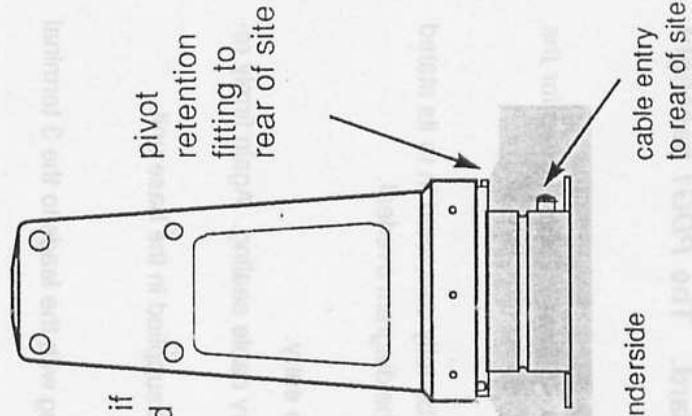
## BOLLARD TOP FITTING SPECIFICATIONS

- 1) When using the HE90 and HIGH-LITE 600 RIGID BOLLARDS on the PDG1 base, M10 x 25 mm long Nylon screws are used in conjunction with M10 nylon nuts.
- 2) When using the HE91 and HIGH-LITE 600 FLEXIBLE BOLLARDS on the PDG1 base, M8 x 25mm long Stainless Steel set pins and nuts are used to retain the bollard tops.

## FRONT VIEW OF HIGH-LITE 600 INSTALLATION



## SIDE VIEW OF HE90/91 INSTALLATION



## TRIPLEX PDG1 BASELIGHT INSTALLATION

The PDG1 Baselight has been designed to accommodate the range of Triplex Plastic Bollard tops. Options available are the twin PL 11 Watt lighting for the HE90 and HE91 (270mm) Bollards and a 3 x PL 11 Watt option for the High-Lite 600 Bollard. The PDG1 baselight minimises maintenance time through it's fast access pivot feature.

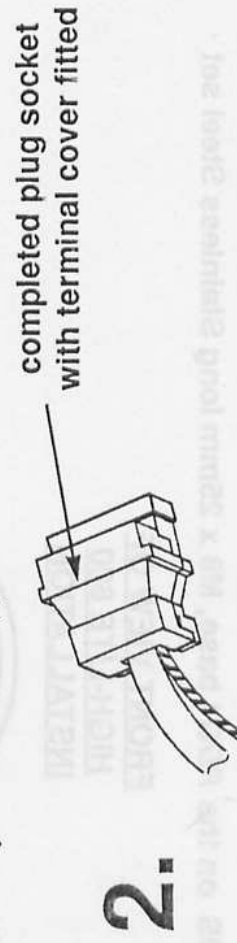
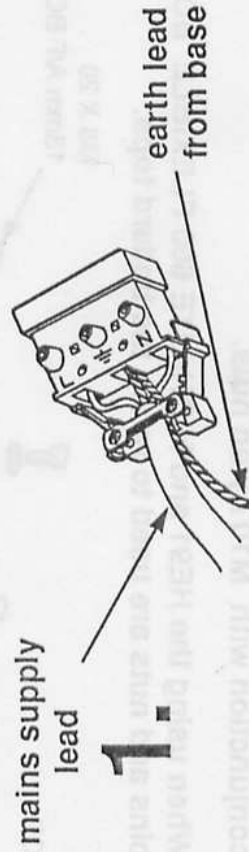
### FOUNDATION

- a) It is highly important to install the PDG1 baselight correctly for performance. The foundation should be in the region of 450mm x 450mm x 250mm deep for the HE90/91 installations and 650mm x 650mm x 350mm deep for the HI-LITE600 installations. Concrete grade C20P to BS 5328:1981 is recommended.
- b) The baselight must be installed with the pivot lock and sealed cable entry glands facing to the rear of the site.
- c) Provision for M16 x 160mm ragbolting to a foundation is provided to BS 873 standards, but we recommend that this base should be fully concreted in to its stated planting level. The level of the concrete foundation must not exceed the underside of the boxed seating collar as shown clearly on the diagram overleaf.

### ASSEMBLY

- a) Run feed cable/s (range of 9 mm to 16 mm in cross-sectional diameter) through the cable glands and firmly tighten to seal the cable entry.
- b) If the second gland is to be used, un-tighten the gland clockwise and knock out the clear plastic sealing plug to facilitate secondary cable sealing. Again firmly re-tighten the cable gland, once the cable has been inserted.
- c) Connect the feed cable to the service cut out (not supplied as standard) if used. The service cut out can be affixed to the fuse board supplied in the base unit.
- d) Connect the earth lead from the service cut out to the earth bonding pin on the base and securely clamp.
- e) The earth lead supplied and pre-attached to the earth bonding pin in the galvanised base can now be prepared and connected along with the leads to the 3 terminal sheathed socket found on the underside of the lamp gear tray. (See illustration below).  
N.B It is recommended that sheathed 3 core cable of approximately 300mm in length is used to connect the detachable sheathed plug socket on the gear tray to the service cut out or supply connection.  
Once the plug socket has been wired up as illustrated it can be then plugged into the gear tray. Seat the gear tray back into the base vessel.

- f) On the Double Pole Isolator Base Option a pre-wired Plug/Lead Assembly from the Gear Tray to the base is supplied.

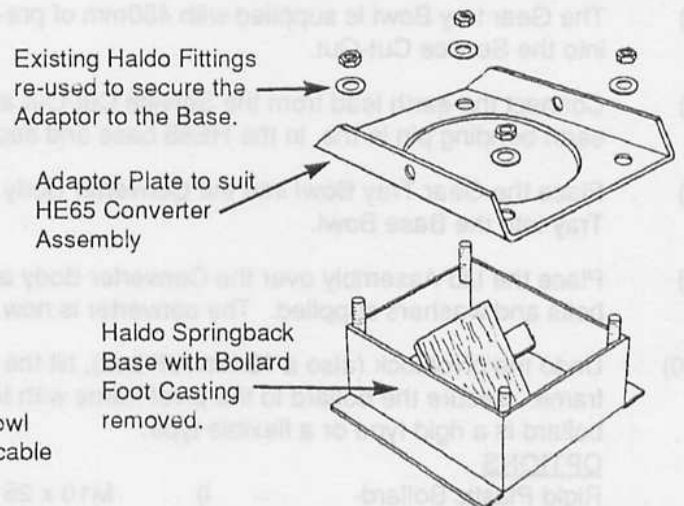
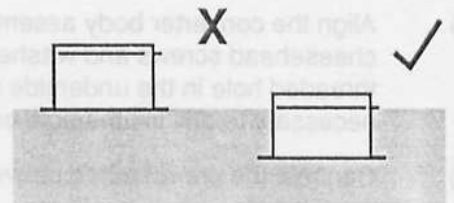
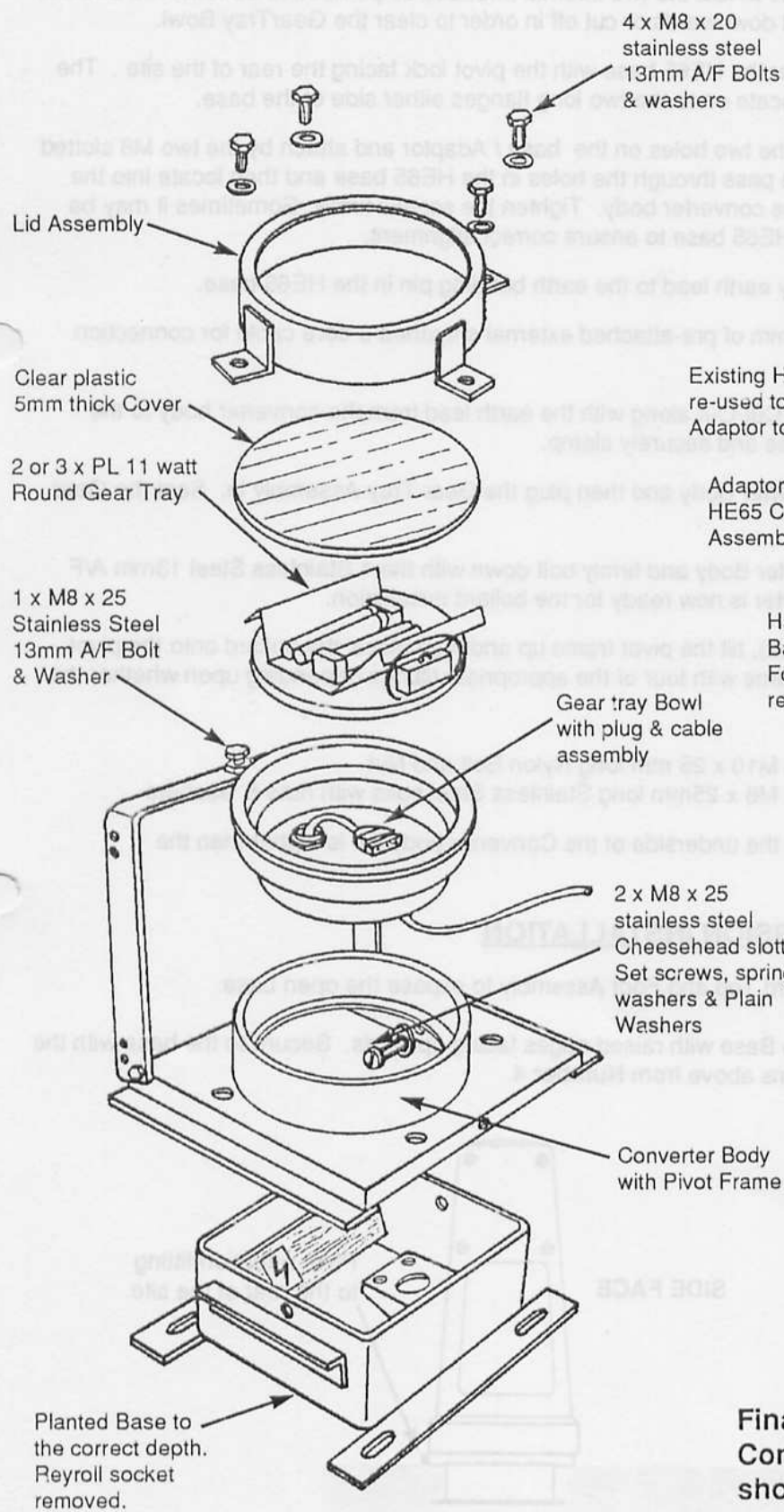


- f) Place the Plastic lid back onto the base unit and firmly bolt down with the 4 stainless steel 13mm A/F bolts and washers supplied. For bases with the Double Pole Isolator option, the tab on the lid must align with the switch bracket in the base.
- g) Undo the pivot lock, tilt the frame and place the Bollard top onto the pivot frame and secure with appropriate fittings i.e Nylon for RIGID and Stainless Steel for FLEXIBLE BOLLARDS (see overleaf for fitting specification). **FINALLY PIVOT BOLLARD PIVOT INTO VERTICAL POSITION AND RE-LOCK PIVOT RETENTION FITTING.**

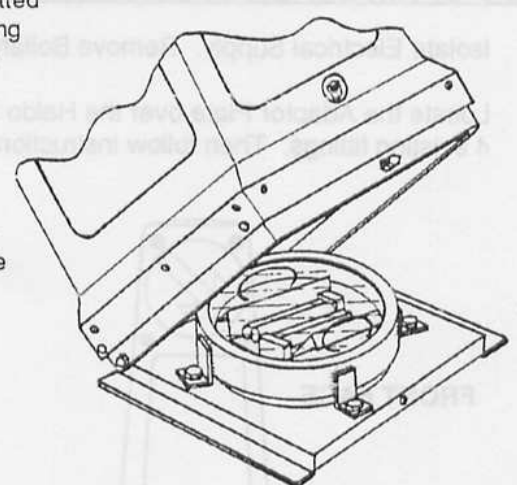
# HE 65 / SIMMONS ALPHA BASE/ HALDO SPRINGBACK BASE TO HE 90/91 BASELIGHT CONVERTER INSTALLATION

## CONVERTER COMPONENTS

The HE65 to HE 90/91 Baselight Converter is only recommended for bases that have been planted to their correct depth



For the Installation of the Converter to a Haldo Springback base an Adaptor Plate is required.



Final Assembly of the HE65 to HE 90/91 Converter Options with bollard attached showing the Pivot Frame operation

# HE65/SIMMONS ALPHA BASE/HALDO SPRINGBACK to HE 90/91 Baselight Converter Installation Procedure

## HE65 AND SIMMONS ALPHA BASE INSTALLATIONS

- 1) Isolate the electricity supply at the Service Cut-out.
- 2) Remove the existing reynolle socket and wiring.
- 2a) For installations to the **SIMMONS ALPHA BASE** the two internal threaded strips need to be removed and the lid retaining brackets will need to be bent downwards or cut off in order to clear the GearTray Bowl.
- 3) Locate the Converter body assembly over the HE65 base with the pivot lock facing the rear of the site . The underside strips on the converter body locate on to the two long flanges either side of the base.
- 4) Align the converter body assembly with the two holes on the base / Adaptor and attach by the two M8 slotted cheesehead screws and washers, these pass through the holes in the HE65 base and then locate into the threaded hole in the underside strip of the converter body. Tighten the screws firmly. Sometimes it may be necessary to drill/file the hole out in the HE65 base to ensure correct alignment.
- 5) Connect the pre-attached converter body earth lead to the earth bonding pin in the HE65 base.
- 6) The Gear tray Bowl is supplied with 450mm of pre-attached external sheathed 3-core cable for connection into the Service Cut-Out.
- 7) Connect the earth lead from the Service Cut-Out along with the earth lead from the converter body to the earth bonding pin in the in the HE65 base and securely clamp.
- 8) Place the Gear Tray Bowl into the Converter Body and then plug the Gear Tray Assembly in. Seat the Gear Tray into the Base Bowl.
- 9) Place the Lid Assembly over the Converter Body and firmly bolt down with the 4 Stainless Steel 13mm A/F bolts and washers supplied. The converter is now ready for the bollard installation.
- 10) Undo the pivot lock (also a 13mm A/F bolt), tilt the pivot frame up and then place the bollard onto the pivot frame. Secure the bollard to the pivot frame with four of the appropriate fittings depending upon whether the bollard is a rigid type or a flexible type.

### OPTIONS

Rigid Plastic Bollard-

i) M10 x 25 mm long Nylon Bolt and Nut

Flexible Plastic Bollard-

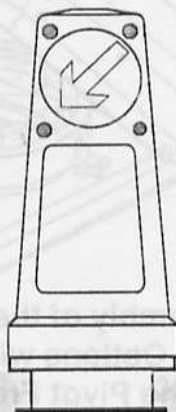
ii) M8 x 25mm long Stainless Steel bolts with nuts & washers

- 11) It is advisable to Concrete/Tarmac up to the underside of the Converter body if it is higher than the surrounding ground.

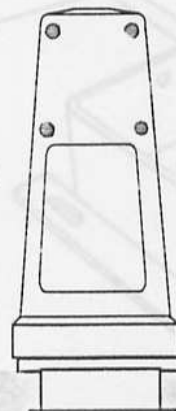
## HALDO SPRINGBACK BASE CONVERSION INSTALLATION

- a) Isolate Electrical Supply. Remove Bollard Top and Foot Assembly to expose the open base.
- b) Locate the Adaptor Plate over the Haldo Base with raised edges facing upwards. Secure to the base with the 4 existing fittings. Then follow instructions above from **Number 4**.

FRONT FACE



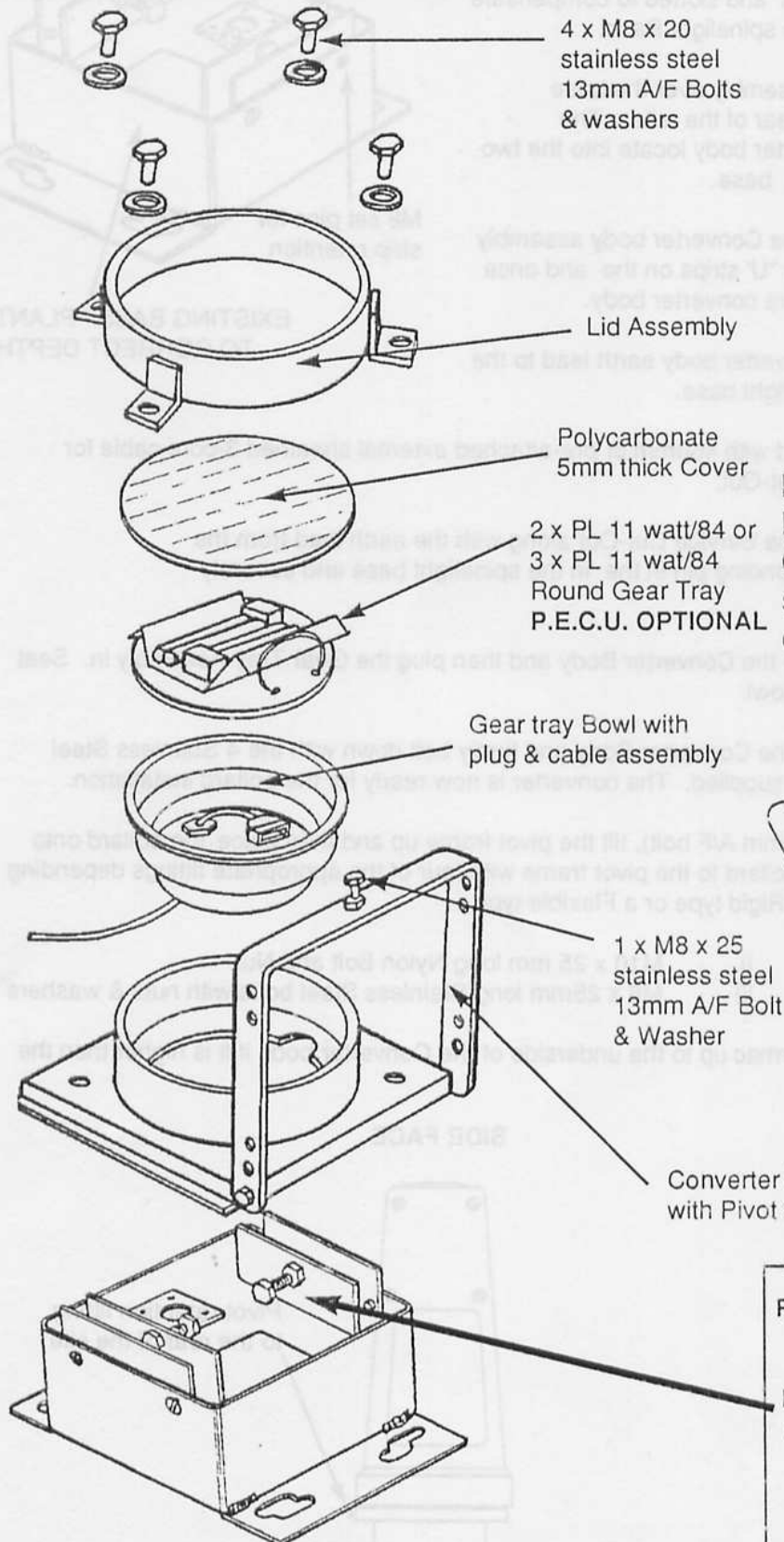
SIDE FACE



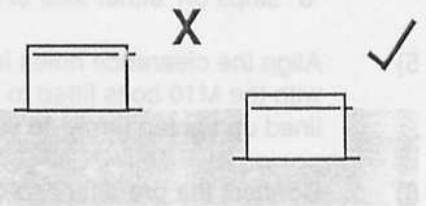
Pivot retention fitting to the rear of the site

# R.S.F / PEARCE GOWSHALL BASE TO HE 90/91 BASELIGHT CONVERTER INSTALLATION

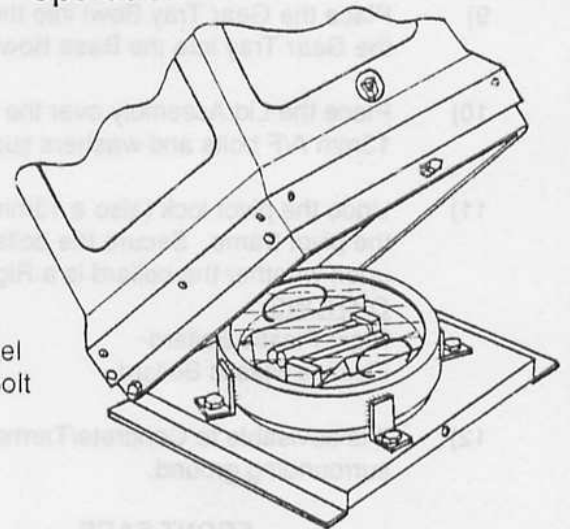
## CONVERTER COMPONENTS



The R.S.F / Pearce Gowshall to HE 90/91 Baselight Converter is only recommended for bases that have been planted to their correct depth



**Final Assembly of the R.S.F / Pearce Gowshall to HE 90/91 Converter with bollard attached showing the Pivot Frame operation**



**R.S.F / PEARCE GOWSHALL SPINELIT BASE with Reyrolle Socket removed.**

**N.B left and right handed converter "U" strips to be fitted to inside of base using M8 set pins and nuts supplied. Converter body then bolted to R.S.F BASE Via M10 Bolts on "U" strips**

# R.S.F / Pearce Gowshall to HE 90/91 Baselight

## Converter Installation Procedure

1) Isolate the electricity supply at the Service Cut-out.

2) Remove the existing reyrolle socket and wiring

3) Fit Converter "U" strips to inside of the base and secure with M8 set pins and nuts supplied .N.B these strips are left and right handed and slotted to compensate for varying hole centres on the spintelight Base.

4) Locate the Converter body assembly over the base with the pivot lock facing the rear of the site . The underside strips on the converter body locate into the two "u" strips on either side of the base.

5) Align the clearance holes in the Converter body assembly with the M10 bolts fitted to the "U" strips on the and once lined up tighten firmly to secure converter body.

6) Connect the pre-attached converter body earth lead to the earth bonding pin in the spintelight base.

7) The Gear tray Bowl is supplied with 450mm of pre-attached external sheathed 3-core cable for connection into the Service Cut-Out.

8) Connect the earth lead from the Service Cut-Out along with the earth lead from the converter body to the earth bonding pin in the in the spintelight base and securely clamp.

9) Place the Gear Tray Bowl into the Converter Body and then plug the Gear Tray Assembly in. Seat the Gear Tray into the Base Bowl.

10) Place the Lid Assembly over the Converter Body and firmly bolt down with the 4 Stainless Steel 13mm A/F bolts and washers supplied. The converter is now ready for the bollard installation.

11) Undo the pivot lock (also a 13mm A/F bolt), tilt the pivot frame up and then place the bollard onto the pivot frame. Secure the bollard to the pivot frame with four of the appropriate fittings depending upon whether the bollard is a Rigid type or a Flexible type.

### OPTIONS

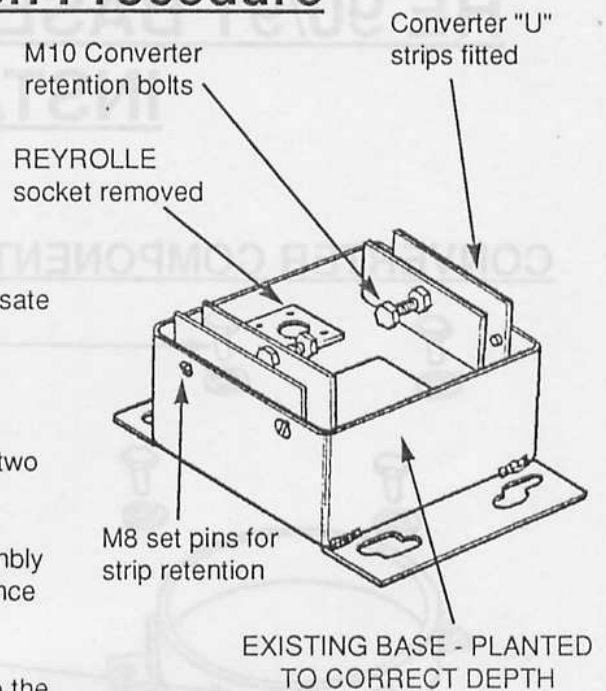
Rigid Plastic Bollard-

i) M10 x 25 mm long Nylon Bolt and Nut

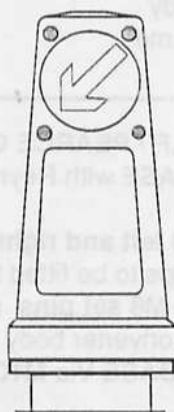
Flexible Plastic Bollard-

ii) M8 x 25mm long Stainless Steel bolts with nuts & washers

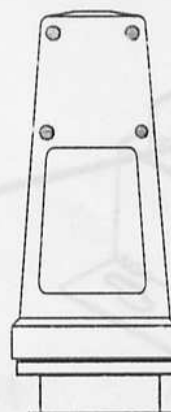
12) It is advisable to Concrete/Tarmac up to the underside of the Converter body if it is higher than the surrounding ground.



FRONT FACE



SIDE FACE

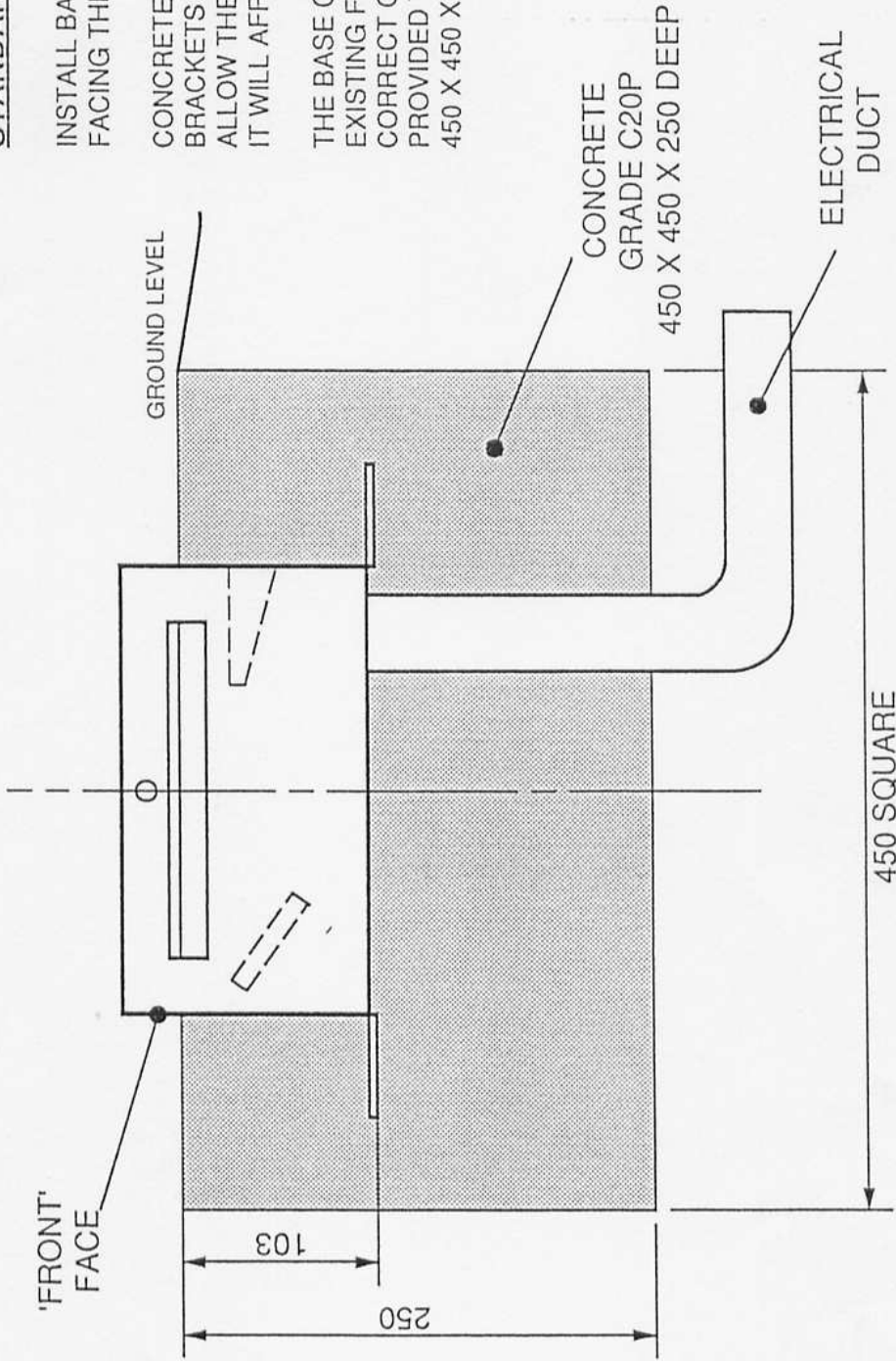


Pivot retention fitting to the rear of the site



# HE65 BOLLARD RANGE STANDARD BASE INSTALLATION

DIRECTION OF  
TRAFFIC



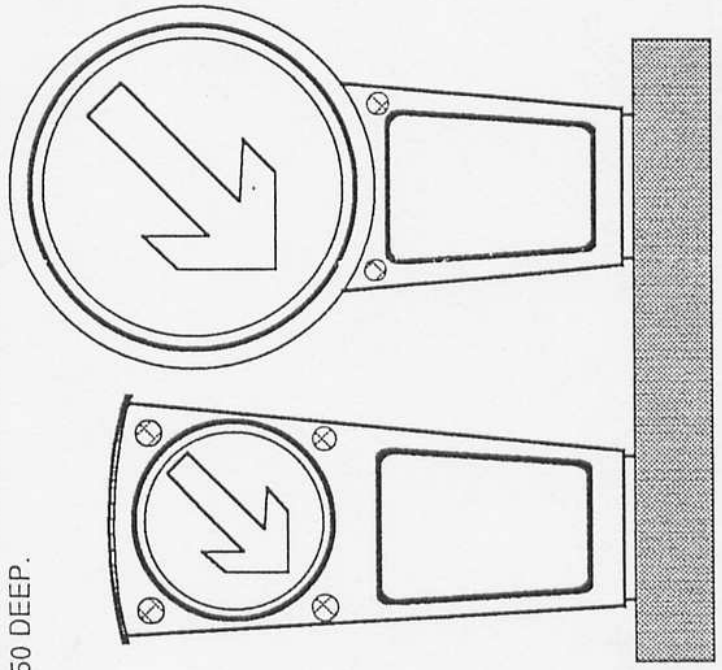
**SIDE VIEW**

## STANDARD BASE INSTALLATION INSTRUCTIONS

INSTALL BASE AS SHOWN WITH THE SIDE MARKED 'FRONT' FACING THE TRAFFIC FLOW.

CONCRETE UP TO THE UNDERSIDE OF THE RIGHT ANGLE BRACKETS WELDED TO THE SIDE OF THE BASE. DO NOT ALLOW THE CONCRETE TO FLOW OVER THIS ANGLE BECAUSE IT WILL AFFECT THE INSTALLATION OF THE BOLLARD TOP.

THE BASE CAN BE RAGBOLTED USING THE RAG FEET TO AN EXISTING FOUNDATION AND THEN BACK FILLED WITH THE CORRECT GRADE OF CONCRETE TO THE REQUIRED HEIGHT, PROVIDED THAT THE EXISTING FOUNDATION IS AT LEAST 450 X 450 X 150 DEEP.

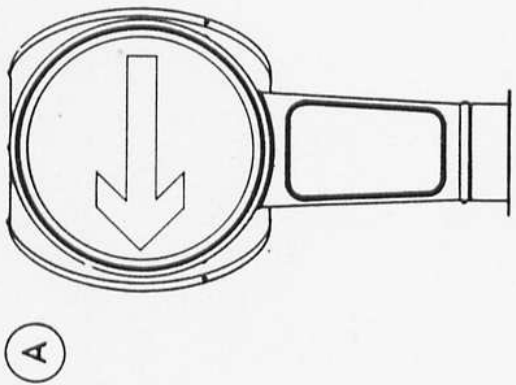


HE65 AND HE65 600 APPLICATIONS

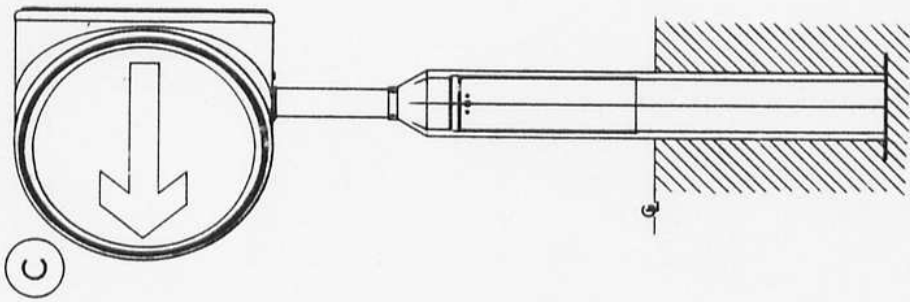
TRIPLEX ENGINEERING LTD, UPPER CHURCH LANE  
TIPTON, WEST MIDLANDS. DY4 9NZ.  
TEL: 021-557 3446 FAX: 021-522 2169

Drawing Should Not Be Scaled... If In Doubt, Ask!

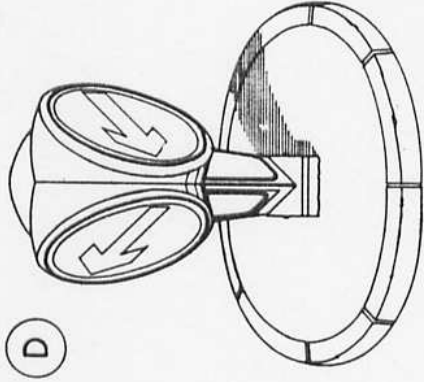
HE 75/24/3 GUARPOST



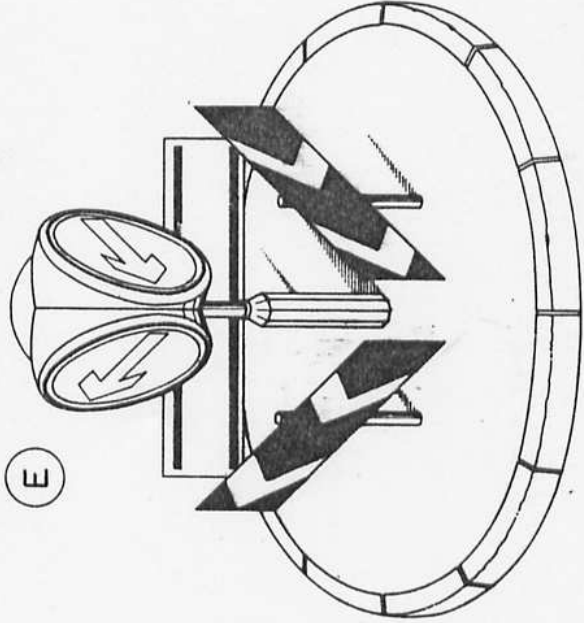
3 ASPECT LANTERN



INSTALLATION OF GUARPOST ON 1.5 M. DIA. MINI-ISLAND



INSTALLATION OF LANTERN AND THREE CHEVRONS ON 3 METRE DIA. MINI-ISLAND



ITEM SCHEDULE

ITEM NO.	DESCRIPTION	QTY	UNIT	REMARKS
HE 75/24 3	ASPECT GUARPOST			
(A)	FRONT VIEW - BODY - 3.3 MM M.S. HEAD - 2 MM M.S. PANELS ARE GLASSFIBRE WITH VANDAL RESISTANT GLAZING.			
(B)	REAR VIEW - SHOWING ACCESS DOOR AND CLEAR VISIBILITY OF DIRECTION ARROWS.			
3	ASPECT LANTERN			
(C)	SIDE VIEW OF LANTERN MOUNTED ON LARGE BASE.			
THE INSTALLATION OF THE 3 ASPECT GUARPOST ON MINI-ISLANDS, AS SHOWN IN (D), OFFERS A CHEAPER AND UNCLUTTERED ALTERNATIVE TO THE USE OF A NUMBER OF SEPARATE SINGLE ASPECT BOLLARDS. (A) AND (B) ILLUSTRATE THE ALL-ROUND VISIBILITY OF THE GUARPOST WHERE CHEVRONS ARE NECESSARY THE 3 ASPECT LANTERN MAY BE USED AT THE NORMAL LANTERN MOUNTING HEIGHT AVOIDING THE EXPENSE AND CONGLOMERATION OF SEPARATE LANTERNS. SEE (E).				
FINISH - GUARPOST AND LANTERN ARE ZINC METAL SPRAYED AND STOVE ENAMELLED WHITE & GRAY RESPECTIVELY				



REVISION	DATE	DESCRIPTION

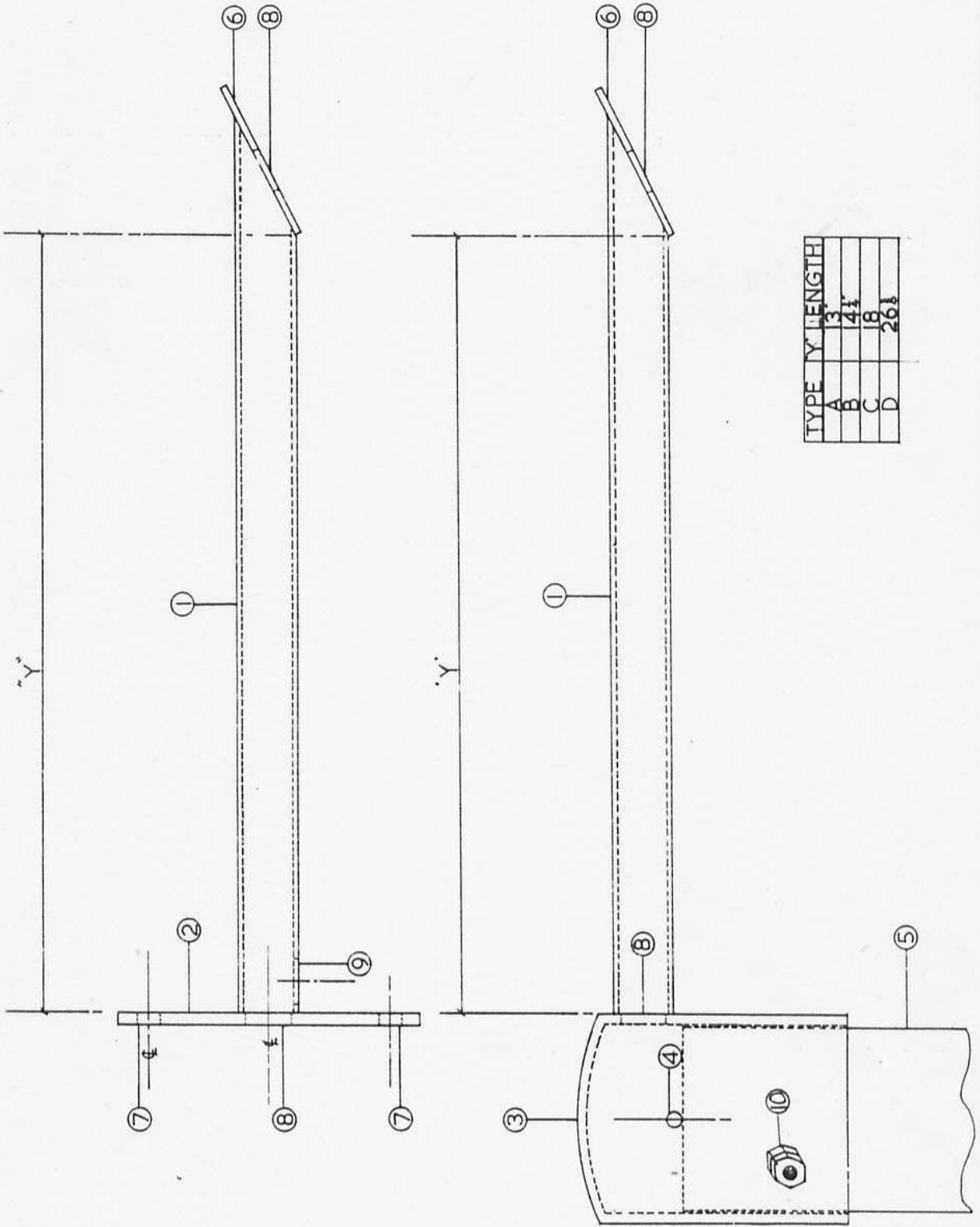
DRAWN BY	S. WALLACE	DATE	31-10-78
SCALE		SHEET NO.	
DRG. NO.	SD0012		

Triplex Engineering Limited.,  
Upper Church Lane, Tipton, West Midlands

HE 75/24/3 SUBJECT GUARPOST/LANT.  
FOR MINI ROUNDABOUT ISL.

FINISH		ORDER NUMBERS AND QUANTITIES	
ORDER NO.	QTY	ORDER NO.	QTY

Drawing Should Not Be Scaled... If In Doubt, Ask!



TYPE	Y	LENGTH
A	3"	
B	4 1/2"	
C	18"	
D	26 1/2"	

**ITEM SCHEDULE**

ITEM No.	DESCRIPTION	QTY	MATL	REMARKS
1	ARM 1x1 RHS			
2	FIXING PLATE			
3	SUPPORT SOCKET 10 SUIT 3" Ø TUBE			
4	STOP BAR 3" Ø			
5	TUBE 3" Ø			
6	HALELITE FIXING PLATE			
7	2 HOLES 1/2" CTRS FOR TESPA BRACKET UNI CLIP OR WALL FIXING			
8	1 CABLE ENTRY HOLES			
9	CABLE ENTRY HOLES FOR 1/2" CONDUIT FITTED WITH PYROFLEX GLAND FOR WALL OR LAMP COLUMN FIXING			
10	FIXING NUTS & SCREWS			

**NOTES**

ITEM 3 CAN BE MADE TO SUIT ANY TUBE OR RHS FOR A SPECIAL TO A WORKS ORDER



Certificate No. FM 13963

REVISION	DATE	DESCRIPTION

DATE	BY	SCALE	DRG. NO.
20-12-74	AW		SD0033

Triplex Engineering Limited,  
Upper Church Lane, Tipton,  
West Midlands.

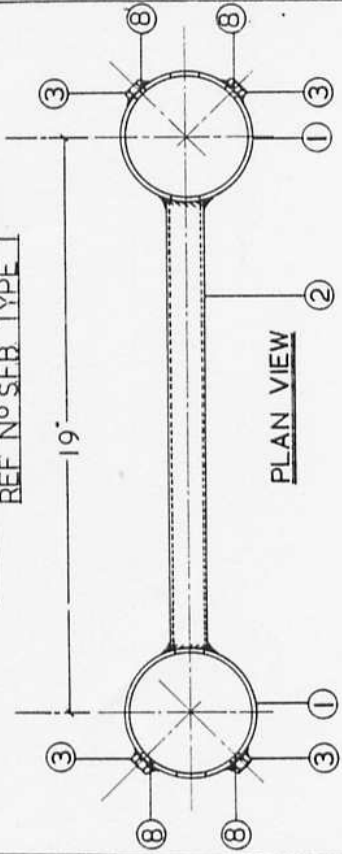
**SUBJECT**  
STANDARD HALE-LITE FIXING BRACKETS

FINISH		ORDER NO.		QUANTITY	
QTY	ORDER NO.	QTY	ORDER NO.	QTY	ORDER NO.

DATE	BY	SCALE	DRG. NO.
20-12-74	AW		SD0033

This Drawing Should Not Be Sealed... If In Doubt, Ask!

**SIDE FIXING BRACKET TYPE 1**  
REF N° SFB TYPE 1



**PLAN VIEW**



**SIDE ELEVATION**



**VIEW IN DIRECTION OF ARROW A**

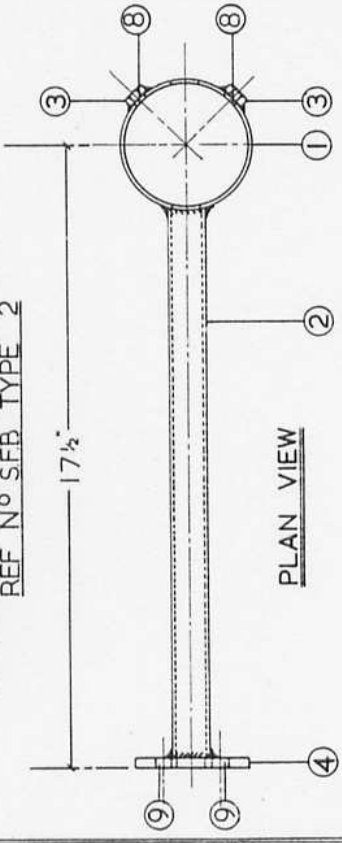
**VIEW IN DIRECTION OF ARROW B**



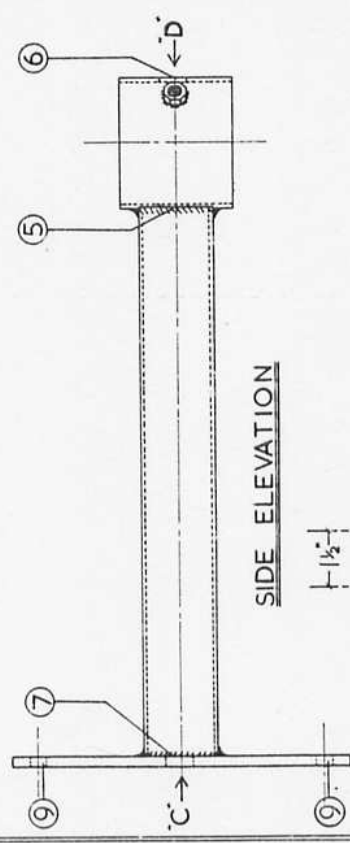
Certificate No. FM 13963

Triplex Engineering Limited,  
Upper Church Lane, Tipton,  
West Midlands.

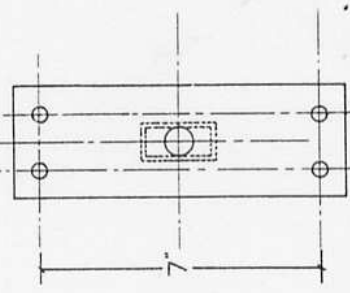
**SIDE FIXING BRACKET TYPE 2**  
REF N° SFB TYPE 2



**PLAN VIEW**



**SIDE ELEVATION**



**VIEW IN DIRECTION OF ARROW C**

**VIEW IN DIRECTION OF ARROW D**

ITEM SCHEDULE		REVISIONS	DATE	DESCRIPTION
1	SFB TYPE 1	1		
2	SOCKET	1		
3	ARM	1		
4	FIXING NUTS	4		
5	CABLE ENTRY HOLE	2		
6	" FEED "	2		
7	FIXING NUT CLEARANCE HOLE	4		
8	SFB TYPE 2	1		
9	SOCKET	1		
10	ARM	1		
11	FIXING NUTS	2		
12	FIXING PLATE	1		
13	CABLE ENTRY HOLE	1		
14	" FEED "	1		
15	CONDUIT FIXING HOLE	2		
16	FIXING NUT CLEARANCE HOLE	2		
17	FIXING HOLES	4		

**NOTES**

STANDARD BRACKETS AS DRAWN WILL MOUNT 24-27 & 30 TRI OR DIA LANTERNS. SPECIAL LENGTHS CAN BE SUPPLIED TO ORDER.  
SFB TYPE 2 WITH END FIXING PLATE ALLOWS FIXING TO ANY SIZE POST, EITHER WITH POST CLIPS, TESPA BAND OR BOLTED TO WALLS OR WOODEN POSTS.  
FINISH  
SHOT BLAST ZINC METAL SPRAY.  
EPOXY COATED GREY

REVISED	DATE	DESCRIPTION

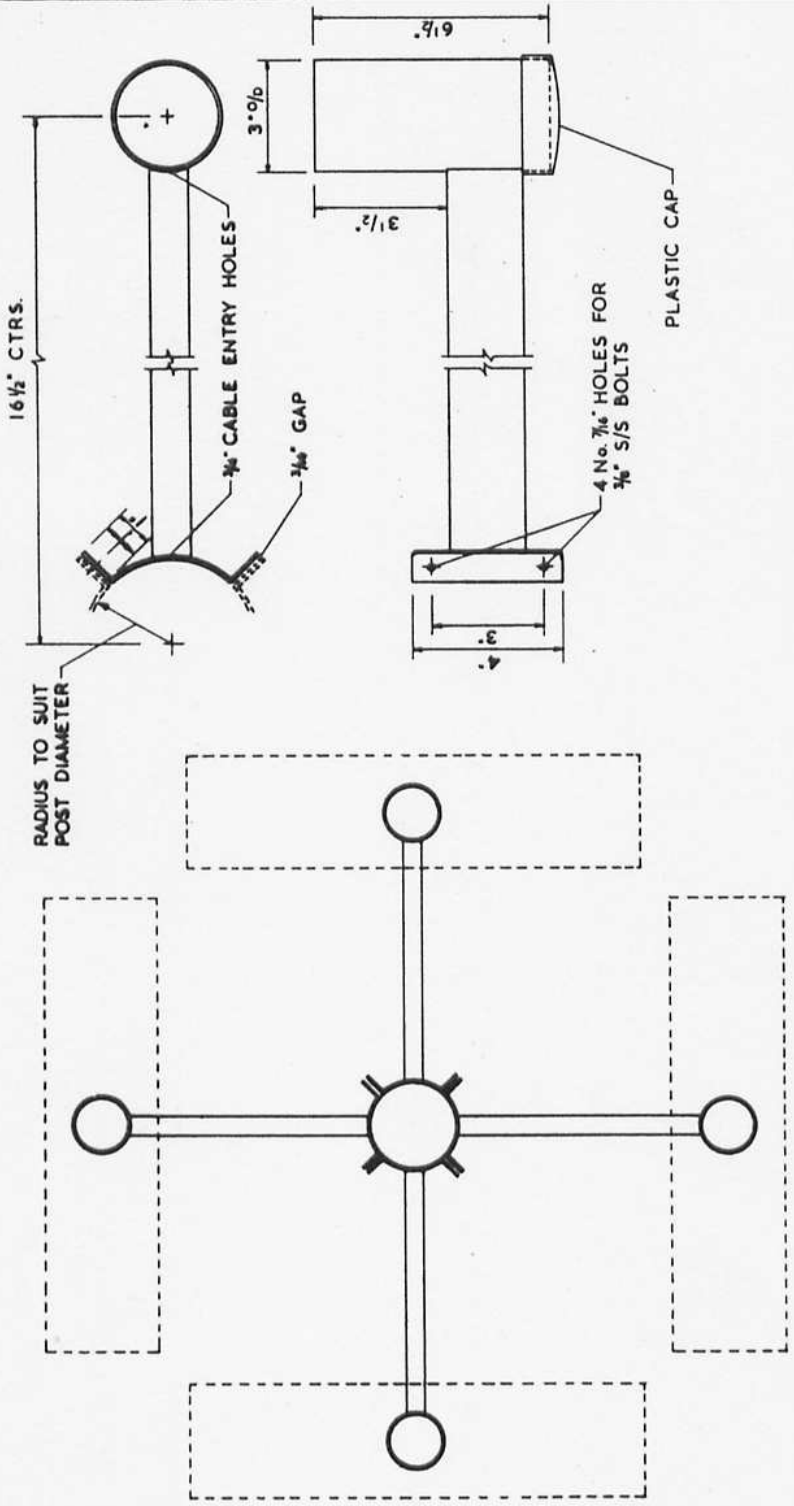
ORDER NO.	QTY	ORDER NO.	QTY	ORDER NO.	QTY

**SUBJECT**  
**STANDARD SIDED FIXING**  
**BRACKETS TYPES 1 & 2**

DRN BY	DATE	SCALE	DRG. N°	SD	00	29



This Drawing Should Not Be Scaled....If In Doubt, Ask!



ITEM SCHEDULE		REVISION	DATE	DESCRIPTION
ITEM NO.	DESCRIPTION	REV.	DATE	REMARKS
CONSTRUCTION:-				
	10 G. MILD STEEL			
	2"x1" B.M.S.			
	3" O.D. CHS.			
FINISH:-				
	ZINC METAL SPRAYED			
	EPOXY ENAMELLED GREY			
NOTES:-				
	LANTERNS MAY BE ROTATED TO			
	FACE TRAFFIC EMIT			



Certificate No. FM 13963

REVISION	DATE	DESCRIPTION

DATE	BY	SCALE	DATE
17/12/74	S. Wallace		

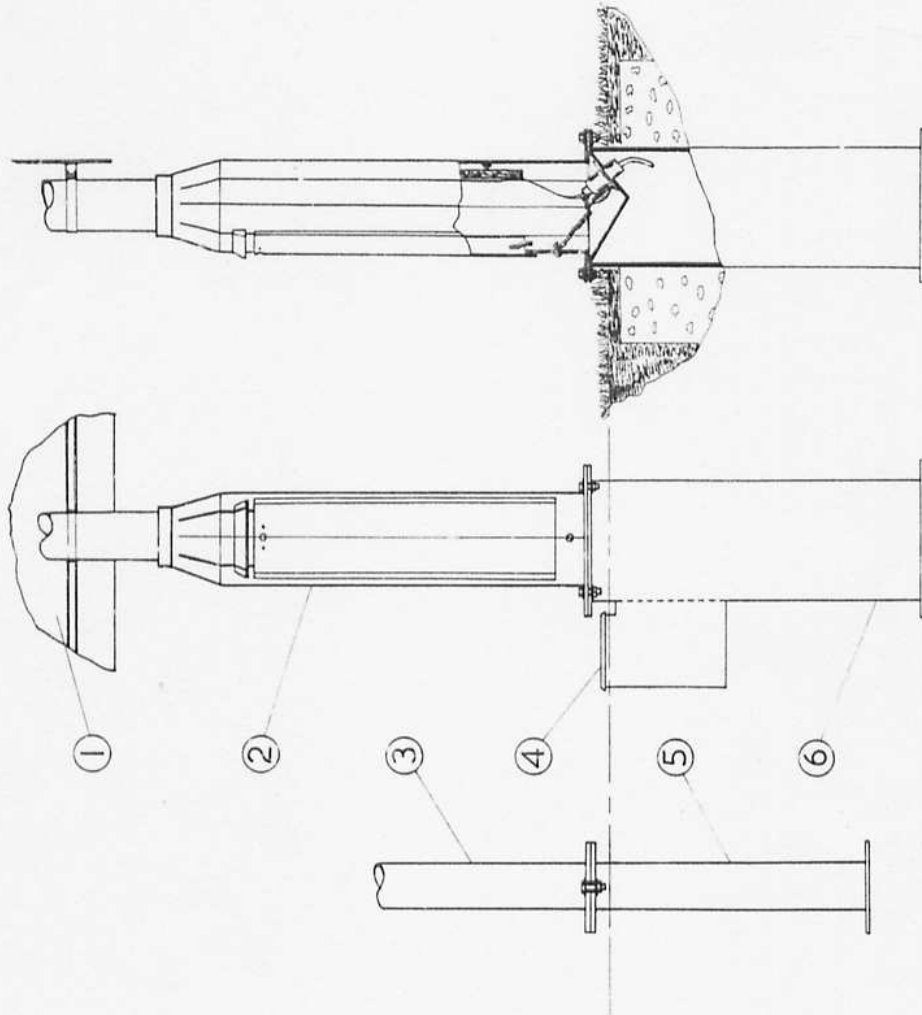
DRG. NO.	S D0038
----------	---------

FROM		CHECKED		QUANTITIES		BY	
NO.	DATE	NO.	DATE	QTY	UNIT	QTY	UNIT
2/1/75							
5/1/75							
6/1/75							

**SUBJECT**  
**4 ASPECT SOCKET MOUNTING**  
**BRACKET FOR 24" DIA. LANTERNS**

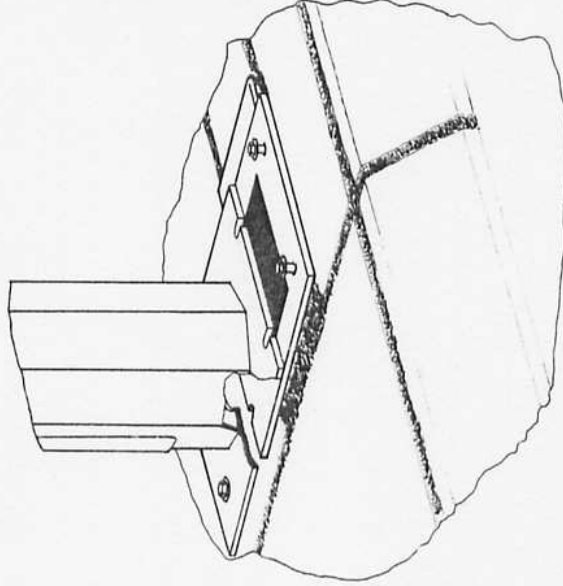
Triplex Engineering Limited,  
 Upper Church Lane, Tipton,  
 West Midlands.

This Drawing Should Not Be Scaled...If In Doubt, Ask!



BREAKAWAY POST ASSEMBLY

BREAKAWAY LARGE BASE ASSEMBLY



**ITEM SCHEDULE**

STEP No.	DESCRIPTION	UNIT	QTY.	REMARKS
1	SIGN			
2	LARGE BASE POST			
3	POST			
4	WATERPROOFED SERVICE BOX			
5	POST FOUNDATION			
6	L.B. FOUNDATION BOX			

NOTE  
 DESIGNED TO ALLOW THE LARGE  
 BASE ASSEMBLY TO BREAKAWAY WITH  
 MINIMAL DAMAGE LEAVING SIGN &  
 FOUNDATION ELECTRICALLY SAFE.  
 A WATERPROOF SERVICE BOX IS  
 PROVIDED FOR EASY ACCESS TO  
 THE ELECTRICAL SUPPLY.

STANDARD FINISH  
 SHOT BLAST  
 HOT ZINC METAL SPRAYED  
 UNDERCOATED & TOP COATED  
 GREY EPOXY.



Certificate No. FM 13963

REVISION	DATE	DESCRIPTION

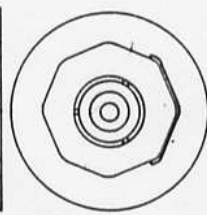
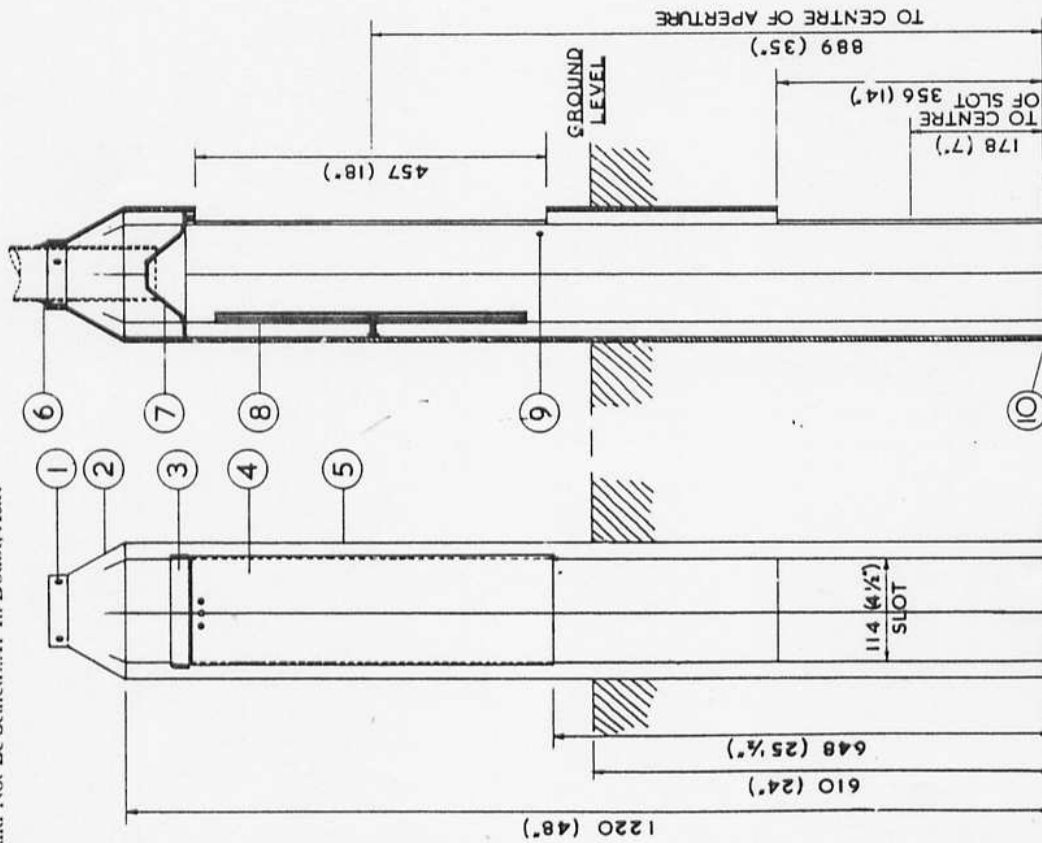
  

DRN BY	At N. S.	DATE	SEPT/77
SCALE	N. T. S.	Sheet No.	—
DRG. No	SD0031/I		

**SUBJECT**  
**FRANGIBLE LARGE BASE**

Triplex Engineering Limited,  
 Upper Church Lane, Tipton,  
 West Midlands.

Drawing Should Not Be Scaled...If In Doubt, Ask!



SECTION



Certificate No. FM 13963

SUBJECT  
LARGE BASE POST

Triplex Engineering Limited.,  
Upper Church Lane, Tipton, West Midlands

ITEM SCHEDULE		
ITEM No.	DESCRIPTION	QTY
1	TOP TUBE LOCKING SCREWS - STAINLESS STEEL	
2	REDUCING COLLAR - MILD STEEL	
3	DOOR WEATHER STRIP - M.S.	
4	DOOR - M.S.	
5	BODY - OCTAGONAL FORMED MILD STEEL	
6	TOP TUBE WEATHER SEAL	
7	RETAINING COLLAR - M.S.	
8	MARINE PLY SWITCHBOARD - 16 1/2" X 4 1/2" X 7/16"	
9	BRASS EARTH PIN	
10	BASE PLATE - M.S.	

NOTES:-  
1. B0365 - SUITABLE FOR 3" O/D TUBE  
2. B03565 - SUITABLE FOR 3 1/2" O/D TUBE

FINISH  
SHOT BLASTED,  
HOT ZINC METAL SPRAYED,  
UNDERCOATED & TOP COATED  
GREY EPOXY.

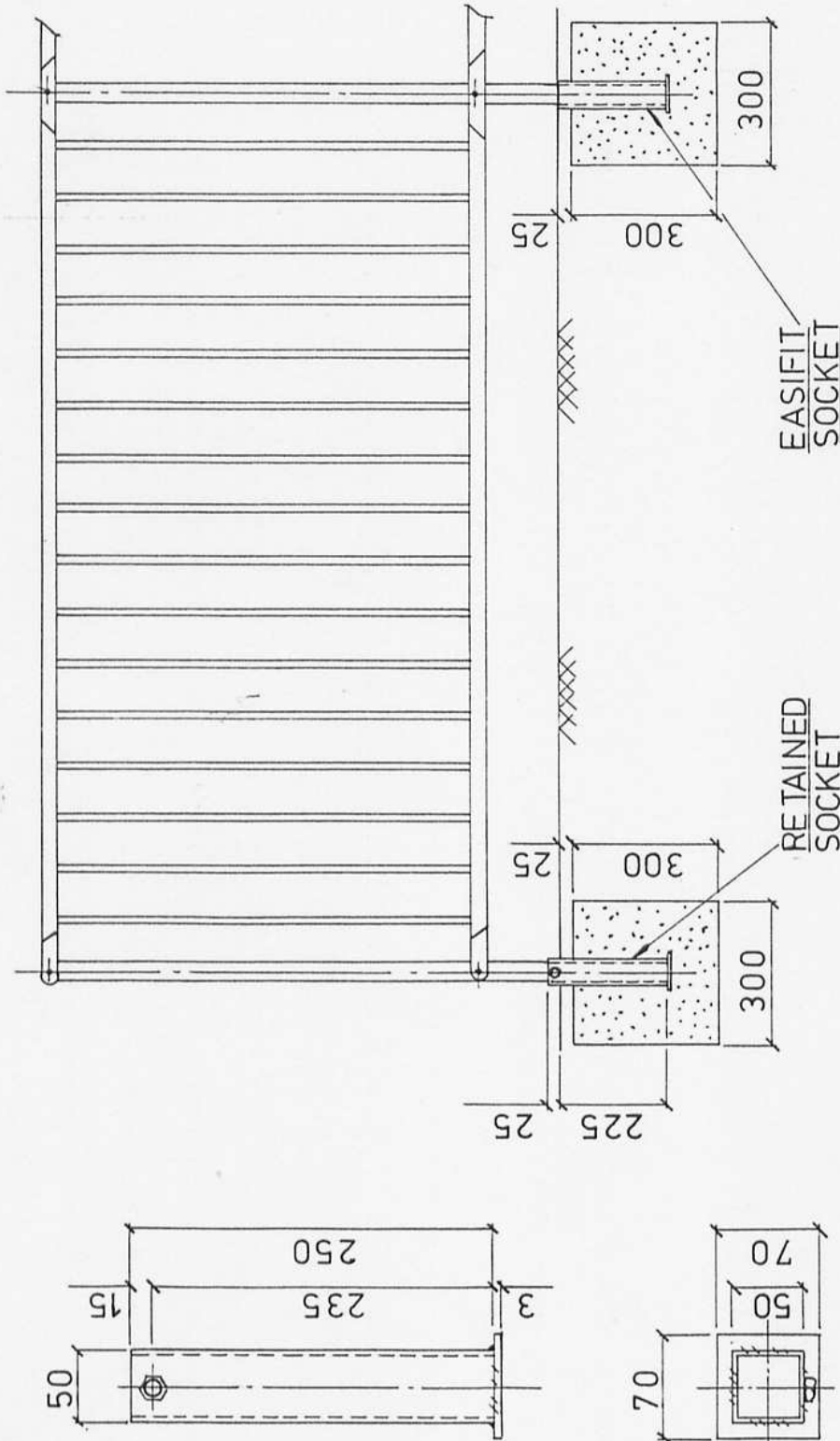
REVISION	DATE	DESCRIPTION

DRN BY	S. Wallace	DATE	27.2.75
SCALE		SHT No	
DRG. No	SD0013/1		



Drawing Should Not Be Scaled ... If In Doubt, Ask!



**RETAINED SOCKET  
 FITTED WITH M10 DIA  
 x 20 LONG STAINLESS  
 STEEL SOCKET SET  
 SCREW.**

**CONCRETE 0.027 M<sup>3</sup> MINIMUM**

**EASIFIT SOCKET  
 FLUSH FITTING**



Triplex Engineering Limited,  
 Upper Church Lane, Tipton, West Midlands.

**SUBJECT  
 HALE RALE 'A' SOCKET**

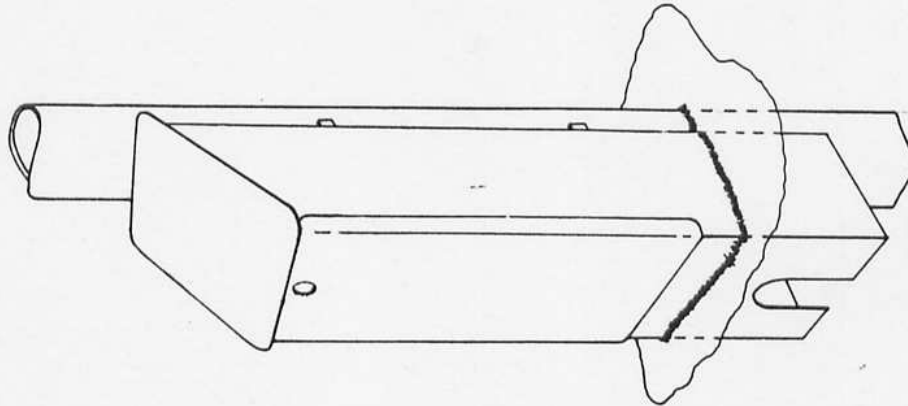
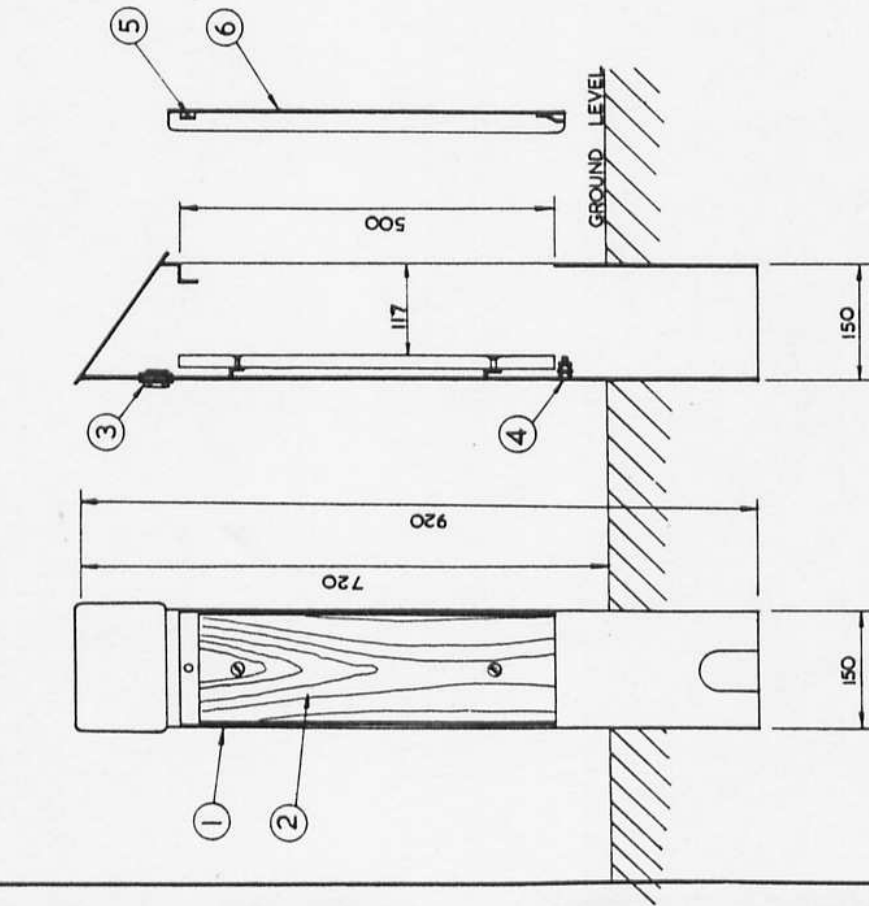
**FINISH  
 Z.M.S  
 ALUM**

THIS DRAWING IS A PRIVATE AND CONFIDENTIAL COMMUNICATION AND THE PROPERTY OF HALE & HALE ENGINEERS LTD. IT MUST NOT BE COPIED OR LOANED WITHOUT WRITTEN CONSENT.

**DRN BY** P Wood  
**SCALE**  
**DRG. No.** SD0001/2

**DATE** APR 83  
**SHT. No.**  
**DRG. No.** SD0001/2

Drawing Should Not Be Scaled...If In Doubt, Ask!



ITEM SCHEDULE

ITEM No.	DESCRIPTION	QTY	UNIT	REMARKS
1	BODY 3mm THICK MILD STEEL			
2	MARINE PLY SWITCHBOARD 500 x 130 x 12			
3	CABLE OUTLET CONDUIT			
4	EARTH PIN 8mm DIA. BRASS			
5	TRIANGULAR BOLT FIXING ALTERNATIVE SAFE LOCK			
6	DOOR 2mm THICK MILD STEEL			
NOTE FOR DETAILS OF BOX SEE SB 0010				
STANDARD FINISH ZINC METAL SPRAY & STOVE ENAMEL GREY				



Certificate No. FM 13963

REVISION	DATE	DESCRIPTION

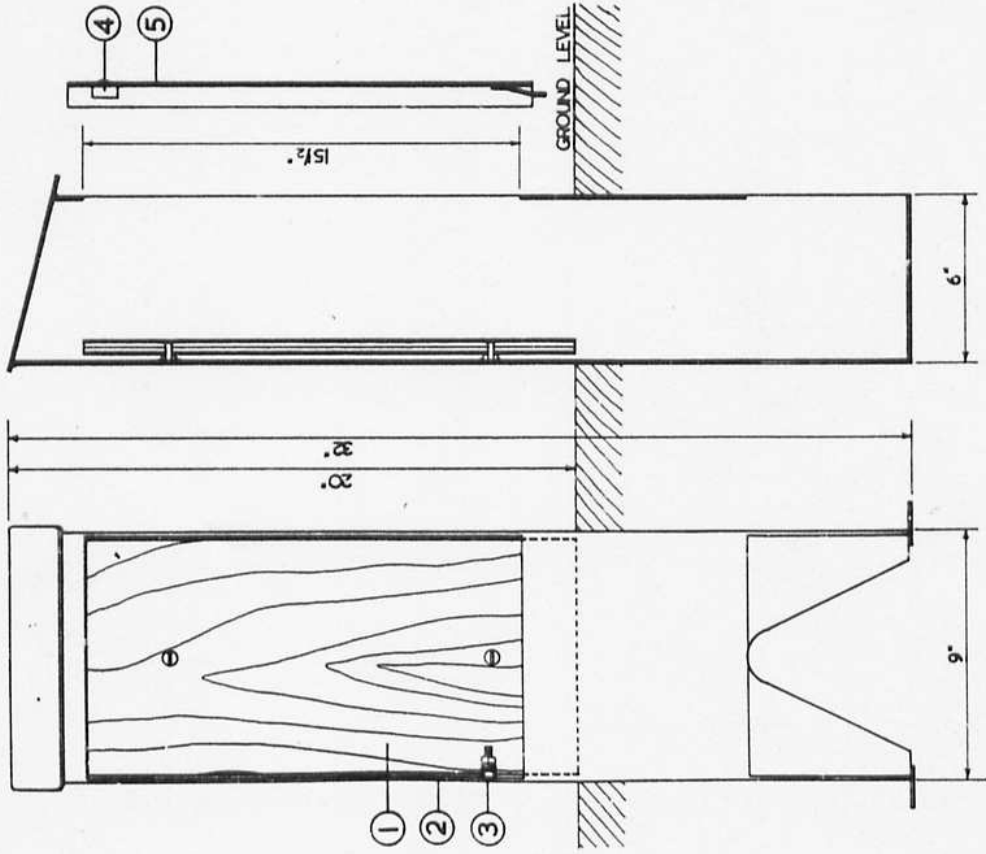
DATE	BY	SCALE	DRG. No	DATE

SUBJECT  
**ELECTRICAL SERVICE BOX**

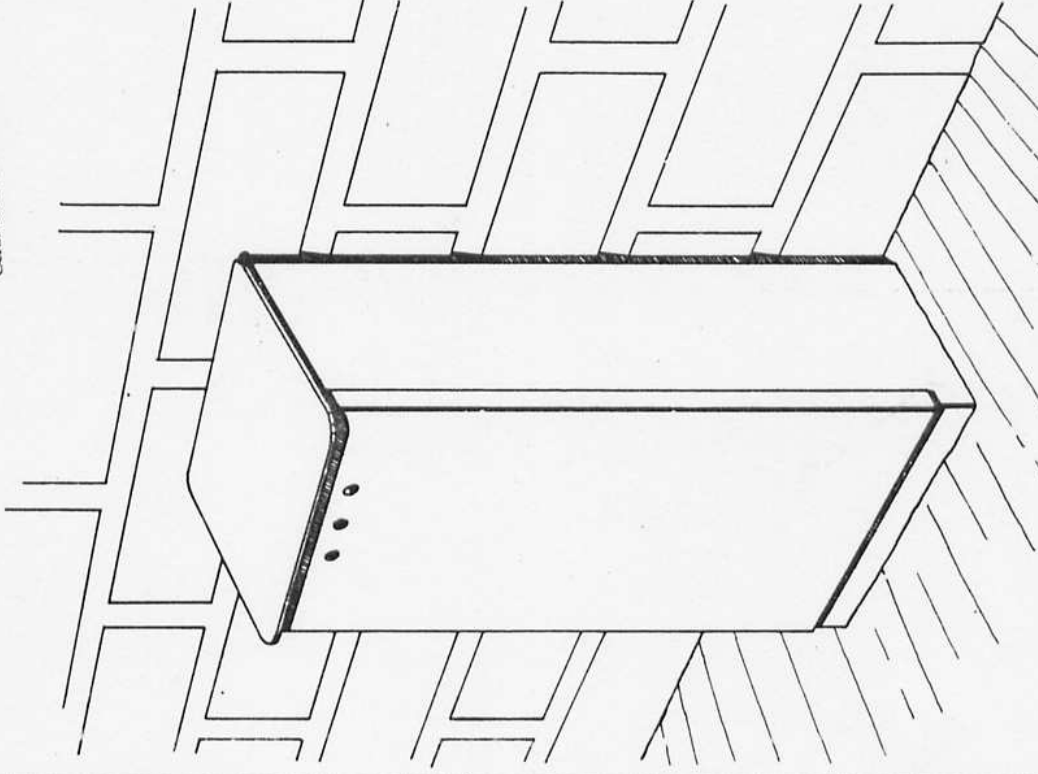
Triplex Engineering Limited,  
Upper Church Lane, Tipton,  
West Midlands.

DEC 76  
SD0048/2

This Drawing Should Not Be Scaled...If in Doubt, Ask!



Certificate No. FM 13963



FINISH  
SHOT-BLASTED  
HOT-ZINC METAL SPRAYED  
STOVE ENAMEL EPOXY, GREY

ITEM SCHEDULE

ITEM NO.	DESCRIPTION	QTY	UNIT	REMARKS
①	MARINE PLY SWITCHBOARD 17 1/2" x 8 1/2"			
②	BODY 10 G. MILD STEEL			
③	EARTH PIN 3/4" DIAM. BRASS			
④	"SAFELOCK"			
⑤	DOOR 1/4 G. MILD STEEL			

REVISION	DATE	DESCRIPTION

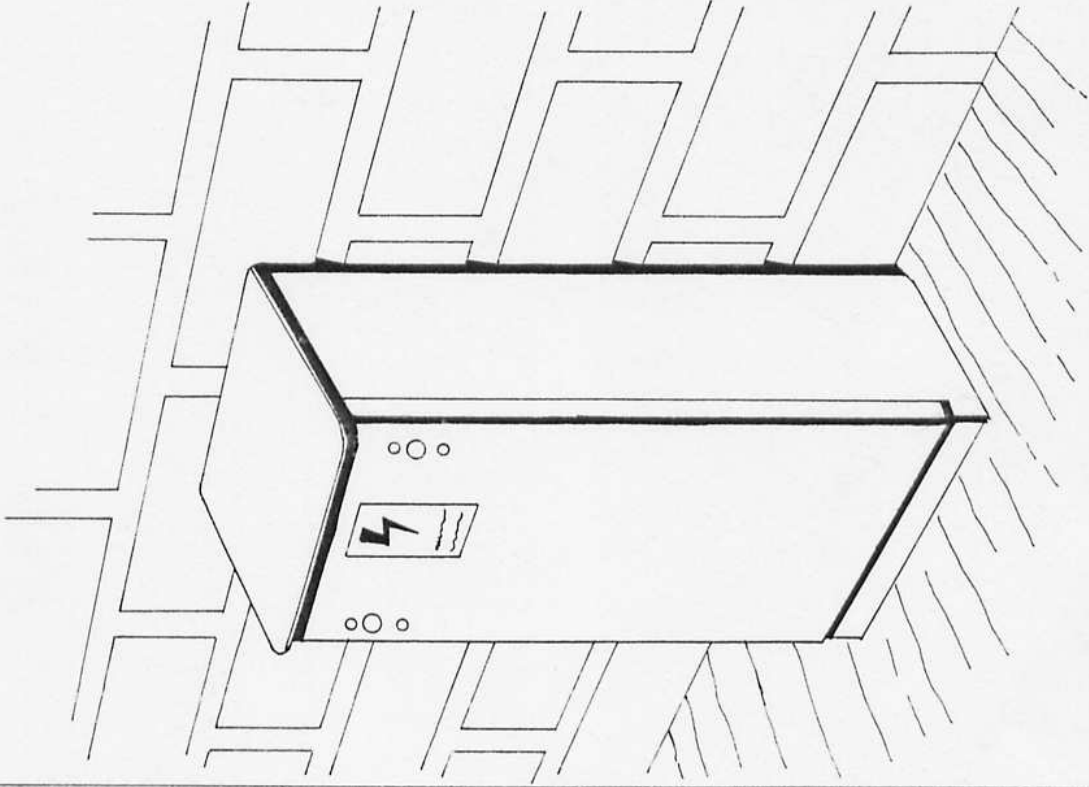
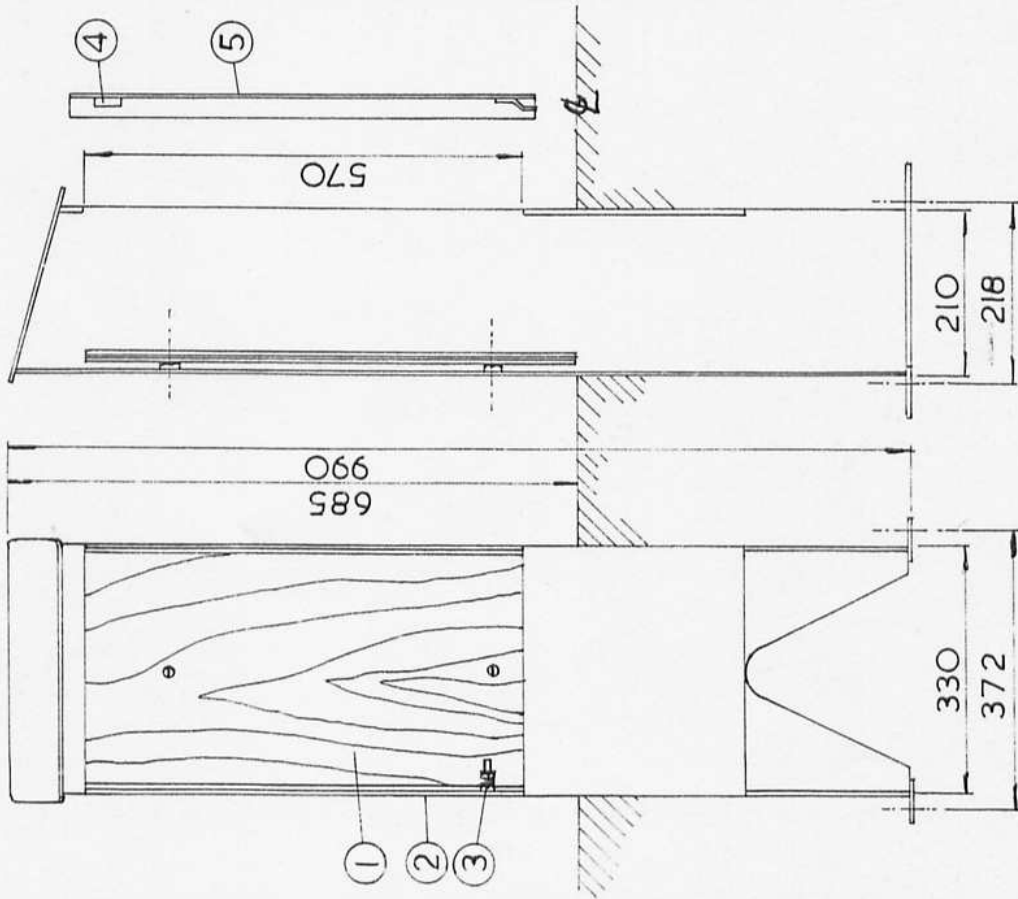
DRN BY	S. L.	DATE	20/11/77
SCALE			
DRG. NO			
			SD0036

FINISH	QTY	ORDER NO.

SUBJECT  
**ELECTRICAL SERVICE BOX**  
SBOOOI

Triplex Engineering Limited,  
Upper Church Lane, Tipton,  
West Midlands.

This Drawing Should Not Be Scaled ... If In Doubt, Ask!



ITEM SCHEDULE

1	MARINE PLY SWITCH-BOARD 610 X 305
2	BODY 10G M/S
3	EARTH PIN 5/16" Ø BRASS
4	METER LOCK
5	DOOR 14G M/S

ELECTRICAL FLAME  
SYMBOL OPTIONAL.

FINISH  
SHOT BLAST  
HOT ZINC METAL SRAVED  
STOVE ENAMEL  
EPOXY, GREY



THIS DRAWING IS A PRIVATE AND CONFIDENTIAL COMMUNICATION AND THE PROPERTY OF HALE & HALLE ENGINEERS LTD. IT MUST NOT BE COPIED OR LOANED WITHOUT WRITTEN CONSENT.

FINISH  
Z/M/S  
S/E

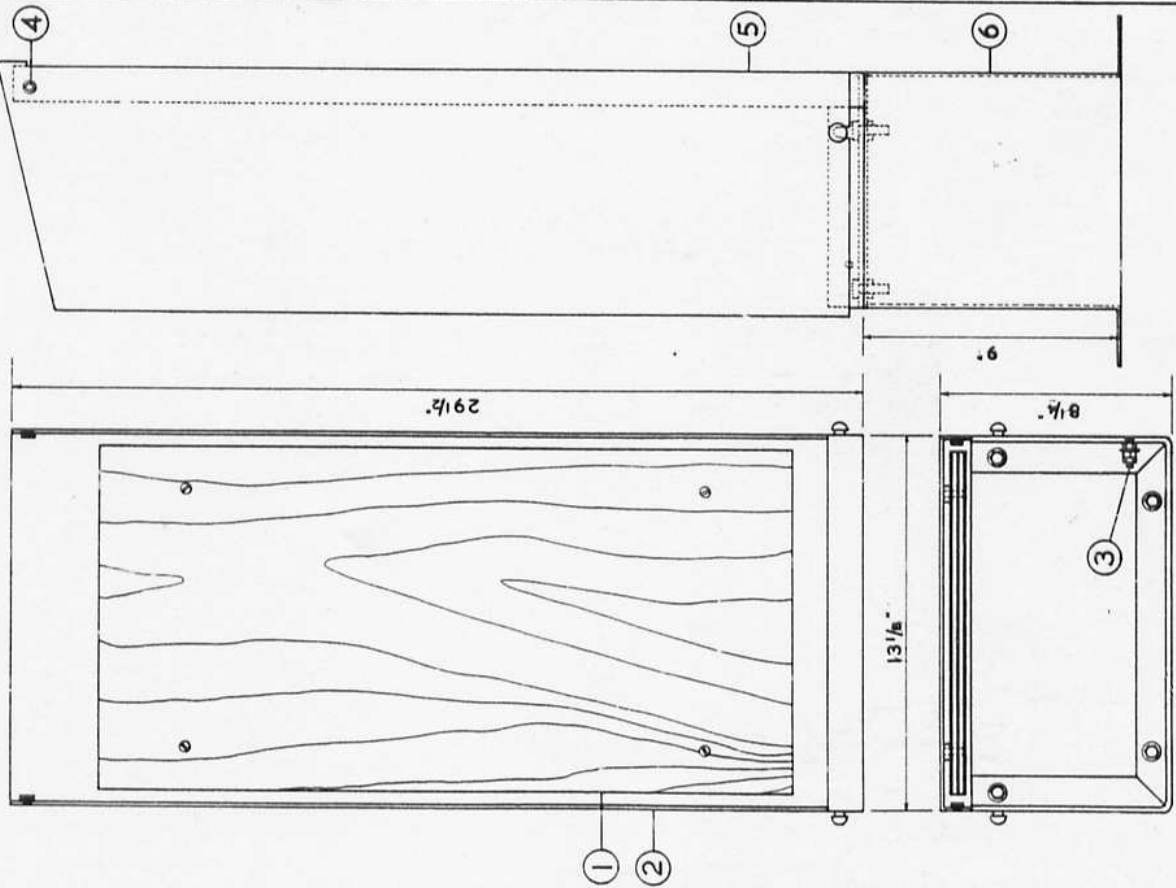
SUBJECT  
ELECTRICAL SERVICE BOX  
SB00011

Triplex Engineering Limited,  
Upper church Lane, Tipton, West Midlands

DRN BY  
SCALE  
DRG. No. SD 0036/1

DATE  
SHT. No.

This Drawing Should Not Be Sealed...If In Doubt, Ask!



ITEM NO.	DESCRIPTION	MATL.	REMARKS
①	1/2" MARINE PLY SWITCHBOARD 24" X 12"		
②	FRAME - 1/4" MILD STEEL PLATE & 1/4" X 1 1/4" X 3 1/4" MILD STEEL ANGLE		
③	EARTH PIN 1/4" DIAM BRASS		
④	1/4" SOCKET BUTTON HEAD S/S RETAINING SCREW		
⑤	COVER - 1/4" MILD STEEL PLATE		
⑥	BASE - 1/4" MILD STEEL PLATE		

FINISH FRAME & COVER SHOT BLASTED, HOT ZINC METAL SPRAYED, STOVE ENAMEL EPOXY, GREY. BASE HOT DIP GALVANISED.

PICTORIAL VIEW SHOWS SERVICE BOX INSTALLED. THE COVER IS SHOWN REMOVED ALLOWING COMPLETE ACCESS TO THE SWITCHBOARD. THE FRAME IS NORMALLY MOUNTED DIRECTLY ON TO THE SURFACE, BUT CAN BE SUPPLIED WITH A BASE AS SHOWN.



Certificate No. FM 13963

Triplex Engineering Limited,  
Upper Church Lane, Tipton,  
West Midlands.

**SUBJECT**  
ELECTRICAL SERVICE BOX  
SB0004

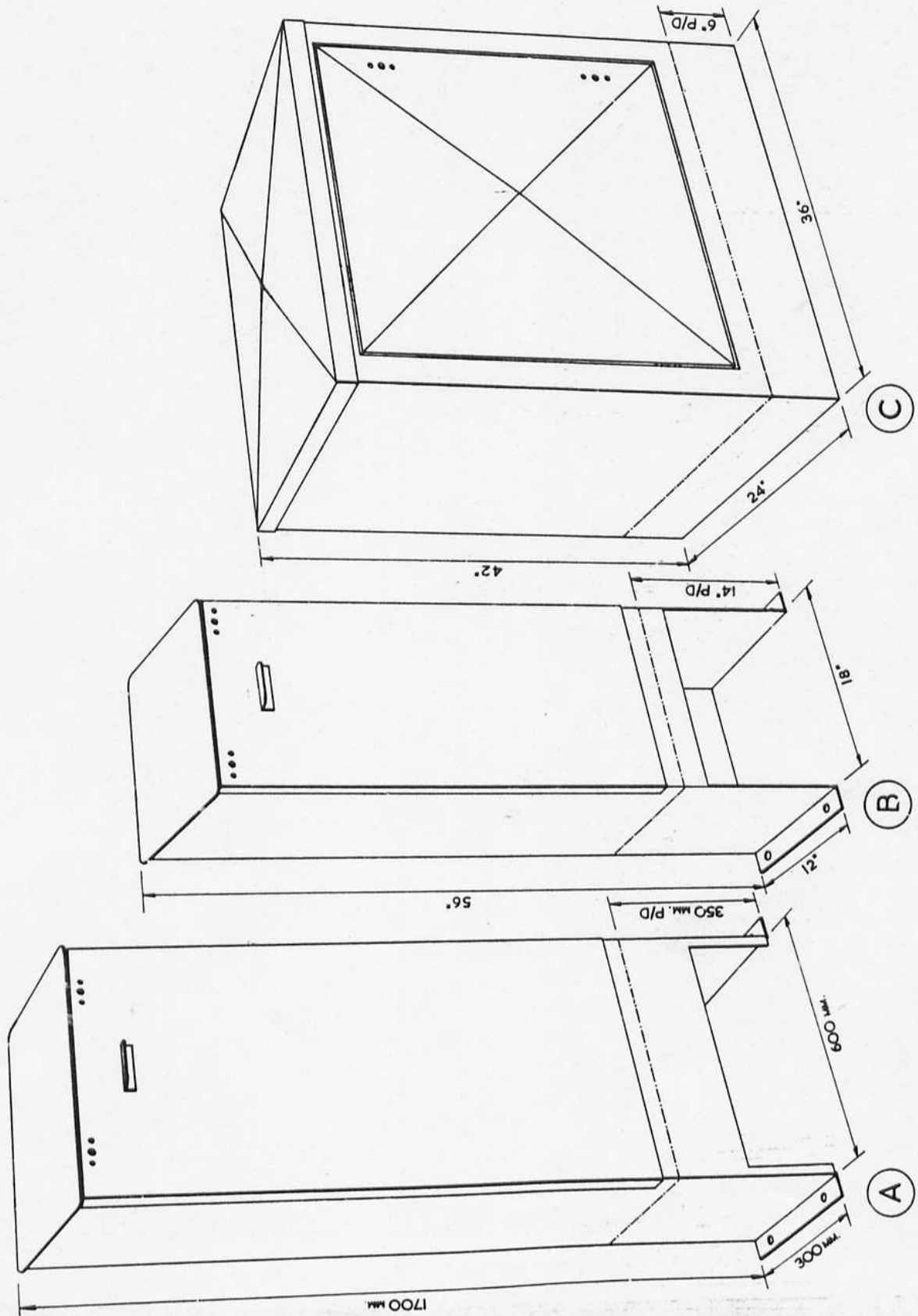
FINISH	ORDER NO.	QTY.	ORDER NO.	QTY.	ORDER NO.	QTY.

REVISED	DATE	DESCRIPTION

DRG. NO.	SCALE	DATE	BY
S00037		28/1/74	S. Wallace

This Drawing Should Not Be Scaled...If In Doubt, Ask!



ITEM NO.	DESCRIPTION	MAT'L	REMARKS
(A)	SERVICE BOX SBOOOR		
	SWITCHBOARD SIZE - 1200 X 560 MM.		
	FOR DETAILS SEE DRWG. SBOO09.		
(B)	SERVICE BOX SBOO06		
	SWITCHBOARD SIZE - 36" X 17 1/2"		
	FOR DETAILS SEE DRWG. SBOO06A.		
(C)	HEAVY DUTY SERVICE CABINET SBOO08		
	SWITCHBOARD SIZE - 32" X 32"		
	FOR DETAILS SEE DRWG. SBOO08.		
	STANDARD FINISH - ZINC METAL SPRAYED & EPOXY COATED, GREY.		
	DIMENSIONS & TYPE OF FINISH CAN BE VARIED ON REQUEST.		



REVISION	DATE	DESCRIPTION

APPROVED	DATE	SCALE	DRG. NO.

ORDER NO.	ORDER DATE	STY.	ORDER NO.	STY.

FINISH

**SUBJECT**  
**ELECTRICAL SERVICE BOXES**

TripLex Engineering Limited,  
Upper Church Lane, Tipton, West Midlands.

DATE 28.9.76