






Civic 1 and 2^{1:4} new

Civic 1:  50W, 70W HPS-T E27	 100W, 150W HPS-T E40	 70W HIT-CE (Philips CDM-TT) E27	 100W, 150W HIT-CE (Philips CDM-TT) E40
 42W, 57W TC-TEL GX24q-4/GX24q-5	Civic 2:  150W, 250W HPS-T E40	 150W HIT-CE (Philips CDM-TT) E40	
 250W HIT (Osram HQI-T, Philips HPI-T) E40	IP66 (optical and gear compartment) EN 60598  6 joules 		

A range of aluminium bodied high performance road and street lighting luminaires.



Civic's unique optical system delivers uniform lighting precisely where it is needed. It offers best value and the most versatile range for use on major traffic routes, secondary roads, town and city streets.

- Choice of two body sizes for different wattages and mounting heights
- Post top or side mounting via one piece rotating spigot
- Shallow bowl or flat glass enclosure with precision engineered reflector and vertical and horizontal lamp holder adjustment
- High quality, lightweight, aluminium construction with low windage

- Range of lamp options from 42W to 250W
- Quick, easy and safe installation
- Fully replaceable 'one piece' gearbox
- Photocell, dimming and energy management versions
- Electronic ballast versions
- Residential distribution option for Civic 1 for sites where a 'softer' cut-off is required.
- Designated vandal proof versions



Optical Distribution

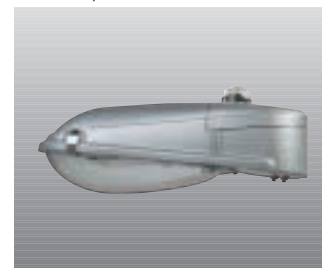
Choose from either 'standard', or 'residential' (for where a softer cut-off and enhanced surround lighting is required).

Materials/Finish

Enclosure: Shallow shock resistant UV stabilised polycarbonate bowl or toughened flat glass.
 Body/gear canopy and spigot: Recyclable die-cast aluminium, matt grey powder coat painted finish (any other RAL colour finish on request).
 Toggles: Stainless steel.
 Reflector: Anodised high grade aluminium.
 Gear tray: Technopolymer.
 Colours RAL colours available on request.



Coloured option

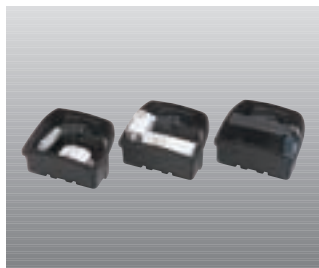


Photocell option





Gear canopy with retainer and anti-vibration screws



Three types of gear: wirewound, power reduction (using ZRMV6M power switch) and electronic

Installation/Mounting

Post top mounting: 60mm Ø x 90mm long spigot (dedicated item(s) available to allow post top 76mm Ø mounting)
Tilted to 5°.

Civic 1 side entry: Ø 34mm to Ø 60mm x 100mm long spigot
Tilted to 0°.

Civic 2 side entry: Ø 42mm to Ø 60mm x 100mm long spigot. (Accessory available to allow Ø 34mm mounting).
Tilted to 0°.

Fixed to shaft/bracket via toolfree rotating spigot and secured by 2 screws with locknuts.

Access to lamp from below via hinged enclosure released by 2 toggles. Replacement possible without using tools.

Access to integral gear tray via removable gear cover released by 2 screws.

Options for photocells, dimming ballasts, electronic ballasts and lighting management systems available.

Cable gland for 8mm to 13mm Ø cable.

Civic 1 Anti-vandal versions have closure clips locked by special screws, tamperproof gear canopy screws and standard spigot fixing screws and locknuts needing both hands and tools to release.

Windage Scx measured lateral to lantern:

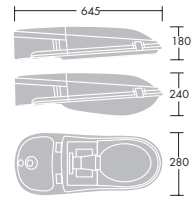
Civic 1	
Flat Glass	0.046m ²
Shallow Bowl	0.056m ²

Civic 2	
Flat Glass	0.073m ²
Shallow Bowl	0.085m ²

Note: Windage will vary depending on wind direction relative to lantern. Figures above are for lateral direction. Other directions may produce windage of Maximum:

Civic 1	
Flat Glass	0.056m ²
Shallow Bowl	0.065m ²

Civic 2	
Flat Glass	0.094m ²
Shallow Bowl	0.094m ²



Ordering Guide standard distribution Lamps to be ordered separately.

Lamp type & rating	Plain Cat. No.	Weight (kg)	Nema Cat. No.	Weight (kg)	Minicell Cat. No.	Weight (kg)
Shallow Bowl, Wire wound gear						
HPS-T/CDM-TT 50W	CIV1SB50.4	6.6	CIV1SBP50.4	6.6	-	-
HPS-T/CDM-TT 70W	CIV1SB70.4	6.7	CIV1SBP70.4	6.7	-	-
HPS-T/CDM-TT 100W	CIV1SB100.4	6.9	CIV1SBP100.4	6.9	-	-
HPS-T/CDM-TT 150W	CIV1SB150.4	7.4	CIV1SBP150.4	7.4	-	-
Flat Glass, Wire wound gear						
HPS-T/CDM-TT 50W	CIV1FG50.4	6.9	CIV1FGP50.4	7.0	-	-
HPS-T/CDM-TT 70W	CIV1FG70.4	7.0	CIV1FGP70.4	7.1	-	-
HPS-T/CDM-TT 100W	CIV1FG100.4	6.3	CIV1FGP100.4	7.3	-	-
HPS-T/CDM-TT 150W	CIV1FG150.4	7.8	CIV1FGP150.4	7.8	-	-
Shallow Bowl, Electronic gear						
HPS-T/CDM-TT 70W	CIV1SBZ70.4	4.9	-	-	CIV1SBZC70.4	4.9
HPS-T/CDM-TT 100W	CIV1SBZ100.4	5.1	-	-	CIV1SBZC100.4	5.1
HPS-T/CDM-TT 150W	CIV1SBZ150.4	5.2	-	-	CIV1SBZC150.4	5.2
TC-TEL 42W	CIV1SBZ42	4.7	-	-	CIV1SBZC42	4.7
TC-TEL 57W	CIV1SBZ57	4.8	-	-	CIV1SBZC57	4.8
Flat Glass, Electronic gear						
HPS-T/CDM-TT 70W	CIV1FGZ70.4	5.3	-	-	CIV1FGZC70.4	5.3
HPS-T/CDM-TT 100W	CIV1FGZ100.4	5.4	-	-	CIV1FGZC100.4	5.4
HPS-T/CDM-TT 150W	CIV1FGZ150.4	5.6	-	-	CIV1FGZC150.4	5.6
TC-TEL 42W	CIV1FGZ42	5.2	-	-	CIV1FGZC42	5.2
TC-TEL 57W	CIV1FGZ57	5.3	-	-	CIV1FGZC57	5.3



Anti-Vandal type

Shallow Bowl, Wire wound gear

HPS-T/CDM-TT 50W	CIVAV1SB50.4	6.6	CIVAV1SBP50.4	6.6	-	-
HPS-T/CDM-TT 70W	CIVAV1SB70.4	6.7	CIVAV1SBP70.4	6.7	-	-

Shallow Bowl, Electronic gear

HPS-T/CDM-TT 70W	CIVAV1SBZ70.4	4.9	-	-	CIVAV1SBZC70.4	4.9
TC-TEL 42W	CIVAV1SBZ42	4.7	-	-	CIVAV1SBZC42	4.7
TC-TEL 57W	CIVAV1SBZ57	4.8	-	-	CIVAV1SBZC57	4.8

Ordering Guide residential distribution

Lamp type & rating	Plain Cat. No.	Weight (kg)	Nema Cat. No.	Weight (kg)	Minicell Cat. No.	Weight (kg)
Shallow Bowl, Wire wound gear						
HPS-T/CDM-TT 50W	CIVR1SB50.4	6.6	CIVR1SBP50.4	6.6	-	-
HPS-T/CDM-TT 70W	CIVR1SB70.4	6.7	CIVR1SBP70.4	6.7	-	-
Shallow Bowl, Electronic gear						
HPS-T/CDM-TT 70W	CIVR1SBZ70.4	4.9	-	-	CIVR1SBZC70.4	4.9
HPS-T/CDM-TT 100W	-	-	-	-	-	-
HPS-T/CDM-TT 150W	-	-	-	-	-	-
TC-TEL 42W	CIVR1SBZ42	4.7	-	-	CIVR1SBZC42	4.7
TC-TEL 57W	CIVR1SBZ57	4.8	-	-	CIVR1SBZC57	4.8



Anti-Vandal type

Shallow Bowl, Wire wound gear

HPS-T/CDM-TT 50W	CIVRAV1SB50.4	6.6	CIVRAV1SBP50.4	6.6	-	-
HPS-T/CDM-TT 70W	CIVRAV1SB70.4	6.7	CIVRAV1SBP70.4	6.7	-	-

Shallow Bowl, Electronic gear

HPS-T/CDM-TT 70W	CIVRAV1SBZ70.4	4.9	-	-	CIVRAV1SBZC70.4	4.9
TC-TEL 42W	CIVRAV1SBZ42	4.7	-	-	CIVRAV1SBZC42	4.7
TC-TEL 57W	CIVRAV1SBZ57	4.8	-	-	CIVRAV1SBZC57	4.8

Accessories

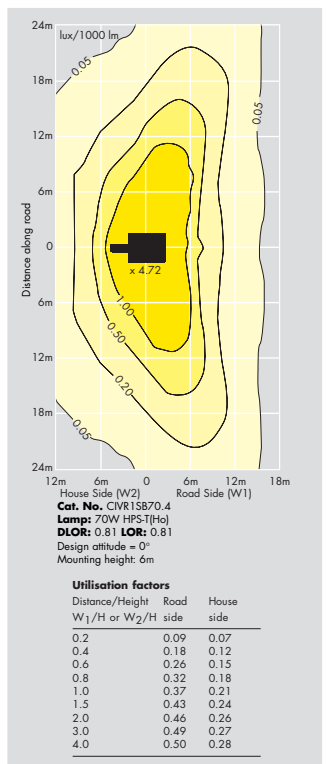
76mm post top mounting accessory CIV76PT

Mounting options:

Above lanterns are suitable for 42/60mm side entry, and 60mm post top mounting.

For 76mm post top mounting, order additionally accessory CIV76PT.

For 34mm side entry mounting use above Cat Nos and add suffix '/SE' eg. CIV1SBP70.4/SE.



Ordering Guide Lamps to be ordered separately.

Lamp type & rating	Plain Cat. No.	Weight (kg)	Nema Cat. No.	Weight (kg)	Minicell Cat. No.	Weight (kg)
Shallow bowl, wire wound gear						
SON-T/CDM-TT 150W	CIV2SB150.4	9.0	CIV2SBP150.4	9.0	-	-
SON-T/HPI-T/HQI-T 250W	CIV2SB250.4	10.6	CIV2SBP250.4	10.6	-	-
Flat Glass, wire wound gear						
SON-T/CDM-TT 150W	CIV2FG150.4	9.6	CIV2FGP150.4	9.6	-	-
SON-T/HPI-T/HQI-T 250W	CIV2FG250.4	11.2	CIV2FGP250.4	11.2	-	-
Shallow bowl, electronic gear						
SON-T/CDM-TT 150W	CIV2SBZ150.4	7.7	-	-	CIV2SBZC150.4	7.7
Flat Glass, wire electronic gear						
SON-T/CDM-TT 150W	CIV2FGZ150.4	8.3	-	-	CIV2FGZC150.4	8.3
Accessories						
Post top mounting accessory for 76mm	CIV76PT	-	-	-	-	-
Side entry mounting accessory for 34mm	CIV34SE	-	-	-	-	-

Mounting options:

Above lanterns are suitable for 42/60mm side entry, and 60mm post top mounting.
 For 76mm post top mounting, order additionally accessory CIV76PT.
 For 34mm side entry mounting, order additionally accessory CIV34SE.

