



Andrew Chalmers & Mitchell Limited
 443-447 Hillington Road, Glasgow G52 4QW, Scotland, U.K.
 Telephone: 041-882 5553 041-882 3318
 Telex: 779378 CHALMT G Fax: 041-883 3704

SECURITY LIGHTING RANGE

CHALMIT SECURITY FLOODLIGHTS

A wide range of floodlights for security applications. Manufactured from corrosion resistant aluminium alloy and protected to IP65.



150 WATT SON/T; C/W T/HALOGEN BACK-UP AND PHOTOCELL

AVAILABLE WITH ONE OR A COMBINATION OF THE FOLLOWING:

A) TUNGSTEN HALOGEN BACK-UP

A 250 watt tungsten halogen lamp is fitted in addition to the specified HID lamp. This ensures that instant light is obtained from switch on. The t/halogen lamp will automatically extinguish when the HID lamp reaches 50% intensity. In the event of temporary mains failure the t/halogen lamp will cut in until the HID lamp has restruck and reached 50% output. Should the HID lamp fail the t/halogen lamp will operate until the failed lamp is replaced.

B) TWIN ARC STANDBY HIGH PRESSURE SODIUM LAMP

If a fully run up HPS lamp suffers a momentary interruption of power supply it takes several minutes for the lamp to restart and reach full intensity. This situation can be unacceptable in many security situations. The Standby lamp provides a simple and cost effective solution to this problem. After a momentary mains failure the second arc-tube will ignite immediately power is restored. Another major benefit of these lamps is that they achieve approximately DOUBLE THE LIFE of standard HPS lamps.

C) PHOTOCELL

A photocell can be supplied with the floodlight for automatic switching. It can be mounted on the luminaire or supplied with a specified length of cable for pole/wall mounting. It should be noted that one photocell can operate several floodlights.

ORDER REF	LAMP	(A) T/HALOGEN BACK-UP	(B) STANDBY HPS	(C) PHOTO- CELL
S604/70	SON/T		*	
S604/150	SON/T		*	
S604/250	SON/T		*	
S604/400	SON/T	*		
S604/600	SON/T	*		
S604/1000	SON/T	*		
S626/80	MBFU		*	
S626/125	MBFU		*	
S626/250	MBFU		*	
S626/400	MBFU	*	*	
S635/70	MBIT		*	
S634/150	MBIT		*	
S634/250	MBIT		*	
S634/400	MBIT	*	*	

NOTE: * - NOT AVAILABLE

TO ORDER:

Please show specification required i.e. 150 watt SON/T with standby lamp, t/halogen back-up & photocell - S604/150 ABC



STANDBY TWIN ARC HPS LAMP

FLOODLIGHT DIMENSIONS				
	LENGTH	HEIGHT	DEPTH	WEIGHT
70-125 WATT	390	225	210	7 KG
150-1000 WATT	540	345	345	14-27 KG

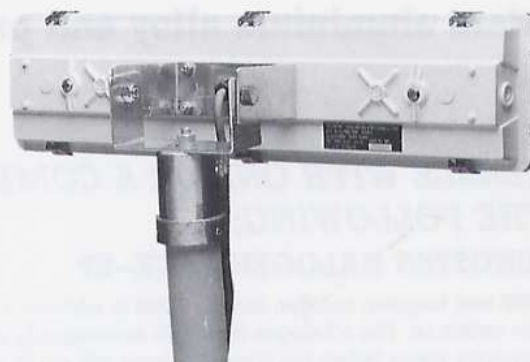
NOTE: A HEAVY DUTY IP67 VERSION AVAILABLE, DETAILS ON REQUEST

LOW MOUNTING SECURITY LUMINAIRE

Designed for use at low mounting heights i.e. fence/perimeter security lighting.

Manufactured from corrosion and damage resistant GRP with a polycarbonate diffuser and protected to IP66 the S390 Range will give long maintenance free operation in outdoor security applications.

The luminaire is offered in three specifications according to lamp type, reflector & wiring requirements.



ORDER REF	S390	S391	S392
Lamp	2 x 18 Watt Compact Fluorescent	2 x 18/20 Watt Fluorescent	2 x 18/20 Watt Fluorescent
Reflector	Parabolic Polished Aluminium	White Painted Steel	White Painted Steel
Lamp Wiring	Parallel	Parallel	Series
Protection	IP66	IP66	IP66
Voltage	240V	240V	240V
Mounting	Spigot	Spigot	Spigot

Weight	Length	Height	Depth
4 kg	670 mm	170 mm	120 mm

Accessories

Stainless Steel Retaining Clips

Chalmit

Andrew Chalmers & Mitchell Limited

Lighting Equipment Manufacturers

443-447 Hillington Road, Glasgow G52 4QW, Scotland, U.K.

Telephone: 041-882 5553 041-882 3318

Telex: 779378 CHALMIT G Fax: 041-883 3704

A NEW LIGHT

ON THE FOOD, DRINK & PHARMACEUTICAL INDUSTRIES



NEW from CHALMIT **THE FF300** series

- Stainless Steel Construction
- Smooth easy-clean exterior for increased hygiene
- Resistant to corrosive vapours and solutions
- Resistant to ingress of moisture and dust

NEW

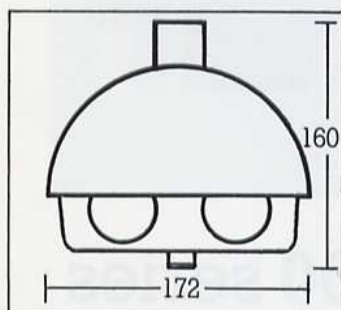
THE CHALMIT FF300 IP65

Stainless Steel Light Fitting Ideal for Food, Drink, Marine and Pharmaceutical Industries

A new range of luminaires designed and manufactured in the UK for use in areas where high levels of hygiene and/or resistance to corrosive vapours and solutions is a requirement.

The luminaire has special design features

- Complies with Food Hygiene and Health and Safety Regulations
- Non ageing Stainless Steel body and Polycarbonate Diffuser
- Highly resistant to corrosive vapours and solutions
- Smooth exterior contours designed to reduce build up of dirt/dust increasing hygiene levels and making cleaning simple
- Resistant to ingress of moisture & dust
- Diffuser retained by 3 stainless steel captive screws
- Electronic start (High Frequency version available)
- Cold store version available
- Available surface or recess mounted.



Nominal length (mm)	Lamp Rating	Circuit electronic start	Type No.	Weight Kg
600	1 x 18/20	ESS	FF312	4.3
	2 x 18/20	ESS	FF322	5.5
1200	1 x 36/40	ESS	FF314	5.3
	2 x 36/40	ESS	FF324	7.0
1500	1 x 58/65	ESS*	FF315	5.2
	2 x 58/65	ESS*	FF325	7.7

* Cold store version available

Constructed to comply with BS 4533 section 102.1

ALSO from CHALMIT

The 470 HIGH BAY

IP66 dust and water tight, highly resistant to corrosive vapour and solutions. Up to 400 watt SON/MBFU/MBI.

