

## Installation and Wiring Instructions for

## DISPLAY RANGE VS, VR SERIES



# THORN

Luminaires for which Safety Mark approval has been granted by British Standards Institution are identified by a suitable label on the product

**IN THE INTEREST OF SAFETY, IT IS RECOMMENDED THAT THE MAIN SUPPLY IS DISCONNECTED BEFORE RELAMPING OR SERVICING LUMINAIRES**

## SURFACE MOUNTED FITTINGS

Terminal block and cable entry holes located at rear of bracket (not shown)

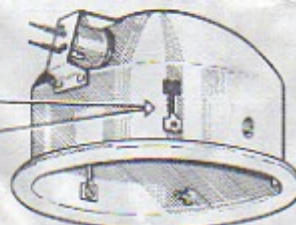


Cat. No's  
VS.2060 B, VS.2060 A, 2x60w.

## RECESSED MOUNTED FITTINGS



METHOD OF MOUNTING  
ON TO CEILING



Cat.No's  
VR.100, 100w. - VR.200, 200w. 125w. KOLORLUX LAMP  
VR.100ES, 80w. KOLORLUX LAMP



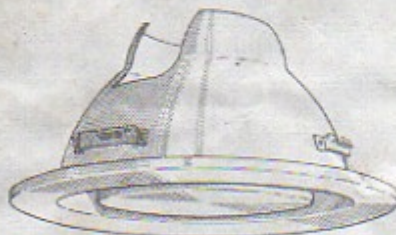
LOUVRE  
Cat. No's VL100, VL200.



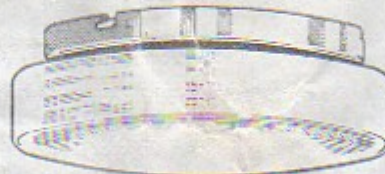
SMALL OPAL GLASS DISH  
Cat. No's VZ100, VZ200.



PIN HOLE ATTACHMENT  
Cat. No. VP100



O LIGHTER ATTACHMENT  
Cat. No. VO.200



LARGE OPAL GLASS DISH  
Cat. No's VY.100, VY.200



CRYSTAL GLASS DISH  
Cat. No's VX100, VX200

Details of Attachments for use with VR100 and VR200 and VS2060

Note: The following control gear must be used with Kolorlux lamps:

80W: RBGR.80 4 } For installation and wiring instructions refer to leaflet AT4621  
125W: RBGR125 4 } Packed with control gear.

Description	Cat. No.	For Use on (Basic Unit)	Max. Lamp Sizes (See Note below)
+Plastic Louvre	VL100	VR100	100w Pearl
+Plastic Louvre	VL200	VR200 & VS2060	200w - 2 x 60w Pearl
*O' Lighter	VO200	VR200	200w Pearl
Pin Hole	VP100	VR100	100w Pearl
Crystal Glass Dish	VX100	VR100 & VR100ES	100w Clear - 80w Kolorlux
Crystal Glass Dish	VX200	VR200 & VS2060	200w 125w Kolorlux - 2 x 60w Clear
Large Opal Dish	VY100	VR100 & VR100ES	100w Pearl - 80w Kolorlux
Large Opal Dish	VY200	VR200	200w Pearl - 125w Kolorlux
Small Opal Dish	VZ100	VR100 & VR100ES	100w Pearl - 80w Kolorlux
Small Opal Dish	VZ200	VR200 & VS2060	200w 125w Kolorlux - 2 x 60w Pearl

\*When using this attachment the fitting must not be mounted on a combustible surface.

+Not suitable for use with Kolorlux lamps.

Note: If a 150w lamp is used in the VR200 it should be a single coil type



## INSTALLATION INSTRUCTIONS

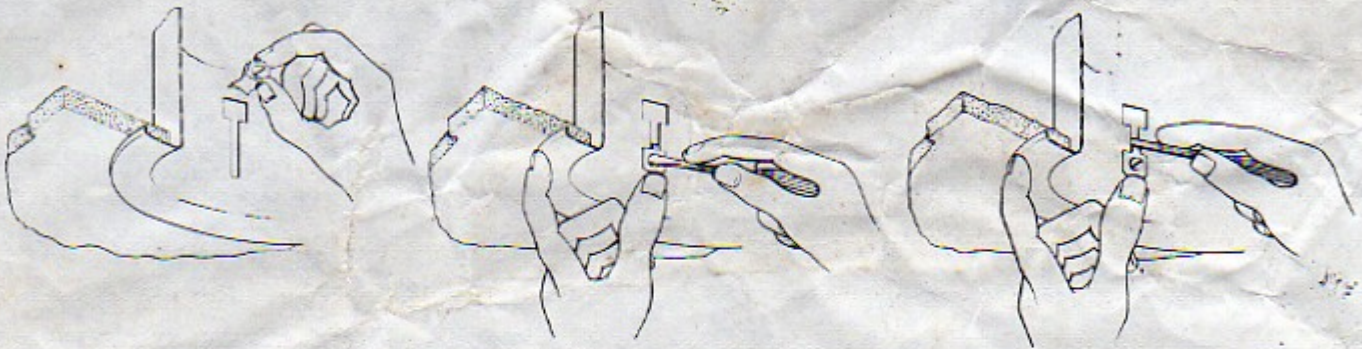
### VR100 and VR200 RECESSED UNIT

1. The VR100 is mounted direct into the ceiling by means of three concealed mounting lugs through a 7/4" dia. hole. This also applies to the VR200 but in this instance the ceiling hole size is 10" dia.
2. Connect flying leads to mains supply. Connect earth wire to point on lampholder bracket
3. Place fitting in aperture in ceiling board and
  - (1) Insert mounting lug.
  - (2) Clamp fitting into ceiling board by tightening screw on mounting lugs.
  - (3) For final adjustment press down on lugs through hole in side of fitting and give an extra turn to screw as figs 1, 2, and 3.

1. Insert Mounting Lug

2. Secure Lug with Fixing Screw and Tighten

3. Press Down and give Screw an Extra Turn



A set of 3 barbed metal support plates (Cat. No. TDSP) are available if mounting clips are being pressed into fragile or brittle surfaces.

4. Fit attachment in position via three slots on to lugs or Basic Unit; twist clockwise to captivate. When using the VO200 the fitting must not be mounted on a combustible surface.

### VS2060 SURFACE MOUNTED

1. The unit is fixed direct to Besa Box or ceiling through two holes on 2" PCD.
2. Connect mains supply to terminal block and earth to point
3. Fit attachments as for VR100 & VR200

The right is reserved to change specifications without prior notification or public announcement.