

# **FOLDED STEEL COLUMNS**

Lighting Columns up to 18  
metres.



# STEEL COLUMNS

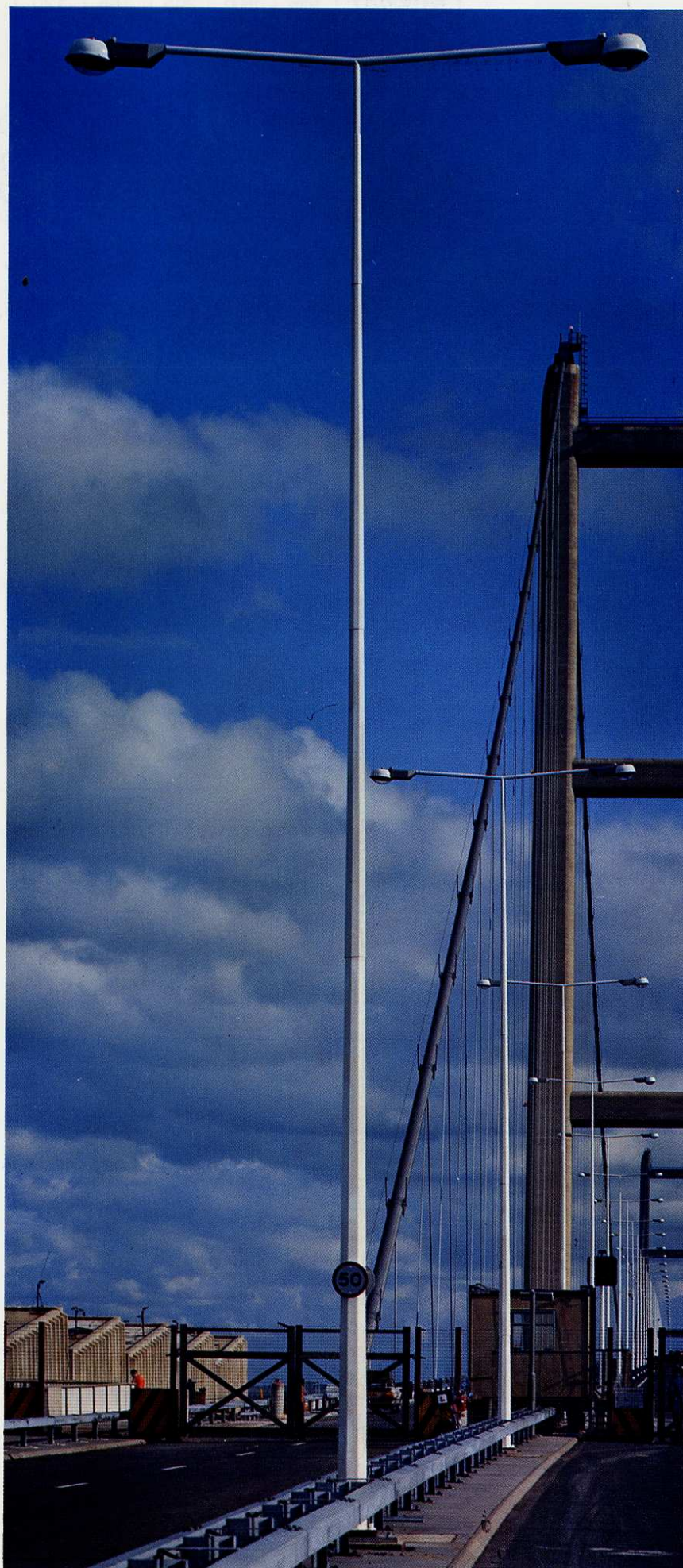
INTERNATIONAL  
8 - 10 - 12 METRE

Heavy duty folded tapering Octagonal columns to BS 5649/EN40 fabricated in welded telescopic jointed sections.

Standard columns are Hot Dip galvanised to BS 729. Supplied with a standard backboard and earthing terminal.

Single and double arm brackets. Quality assured to BS 5750

Part No.	Type	
5102205	8m	rooted
5102206	8m	flanged
5102207	10m	rooted
5102208	10m	flanged
5102209	12m	rooted
5102210	12m	flanged

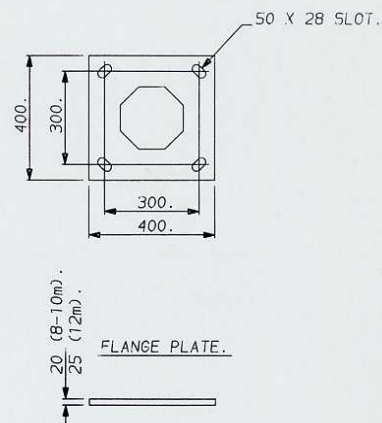
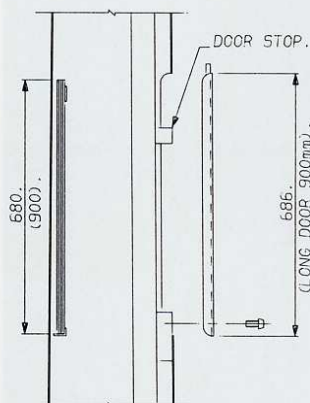
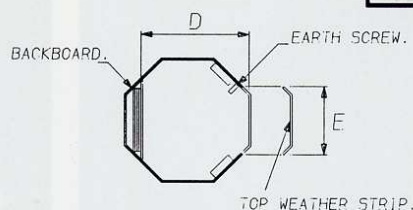
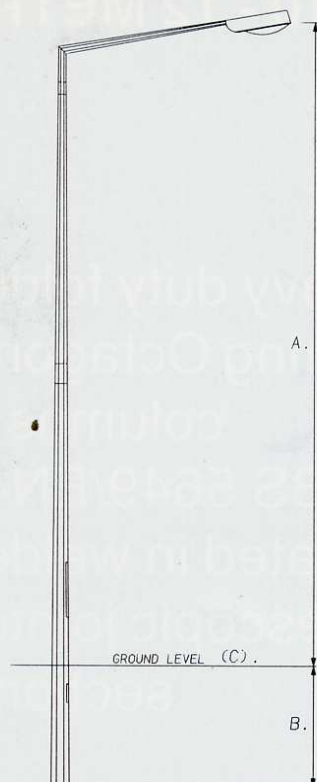


The right is reserved to change specifications without prior notification or public announcement.

**CU**  
LIGHTING

# TECHNICAL DATA

Part Number	A	B	C	D	E
5102205	8m	1500	200	155	110
5102207	10m	1500	205	165	120
5102209	12m	1750	225	185	120



## SELECTED BRACKET/ TYPES AND LOADING DATA

### Brackets 8m [10m in brackets]

Part Number	Projection	Weight kg	k=1.5 m <sup>2</sup>	k=1.8 m <sup>2</sup>	k=2.2 m <sup>2</sup>
5200150	P.T. Sleeve	40 [40]	1.62 [1.02]	1.27 [0.75]	0.95 [0.50]
5200157	0.50 S/A	20 [20]	1.20 [0.80]	0.94 [0.58]	0.70 [0.38]
5200140	1.00 S/A	20 [20]	0.95 [0.64]	0.73 [0.45]	0.54 [0.28]
5200141	1.50 S/A	20 [20]	0.77 [0.51]	0.58 [0.35]	0.42 [0.20]
5200142	2.00 S/A	20 [20]	0.62 [0.41]	0.46 [0.27]	0.32 [0.14]
5200139	0.50 D/A	20 [20]	0.81 [0.48]	0.62 [0.34]	0.45 [0.21]
5200145	1.00 D/A	20 [20]	0.76 [0.43]	0.57 [0.29]	0.41 [0.16]
5200146	1.50 D/A	20 [20]	0.71 [0.38]	0.52 [0.24]	0.36 [0.12]
5200147	2.00 D/A	20 [20]	0.66 [0.33]	0.48 [0.20]	0.31 [0.07]

### Brackets 12m

Part Number	Projection	Weight kg	k=1.5 m <sup>2</sup>	k=1.8 m <sup>2</sup>	k=2.2 m <sup>2</sup>
5200170	P.T. Sleeve	40	0.89	0.62	0.37
5200159	0.75 S/A	20	0.69	0.46	0.26
5200161	1.50 S/A	20	0.51	0.32	0.15
5200163	2.50 S/A	18	0.34	0.19	0.04
5200151	0.75 D/A	20	0.38	0.24	0.11
5200166	1.50 D/A	20	0.31	0.17	0.04
5200168	2.50 D/A	20	0.21	0.08	/



# Apollo column

## Apollo Column

with spigot, or bracket, top entry or side entry.

Octagonal section, one-piece steel column and complies with the requirements of BS.1840.

**Mounting Height** — 5 or 6m as shown.

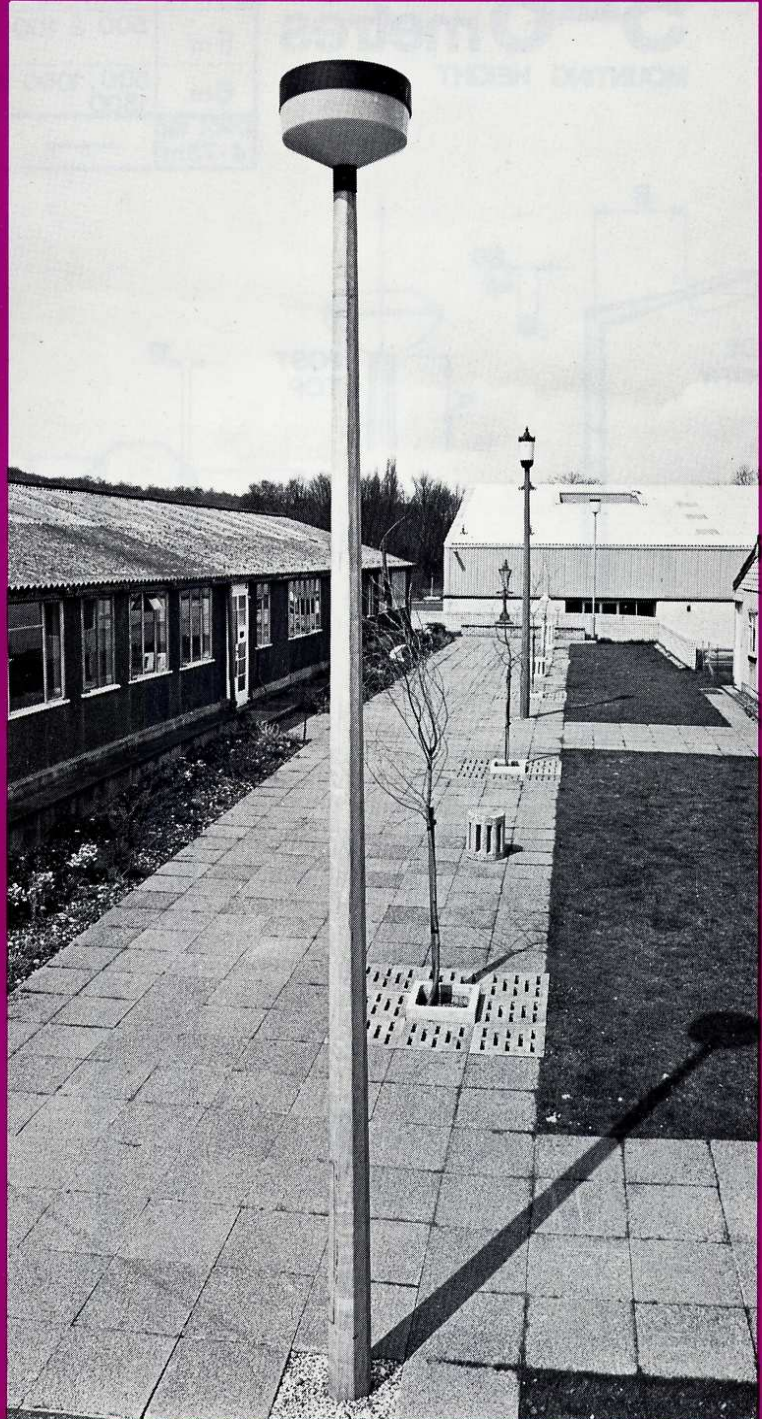
**Finish** — Hot dip galvanised inside and out after manufacture. Phosphate treatment of external galvanised surface as a preparation for painting also available.

**Door** — Hot dip galvanised slip in door with allen screw fixing.

**Spigot** — Standard size 76mm diameter, but other sizes to order.

**Brackets** — Hot dip galvanised octagonal tapering and brackets to suit top or side entry lanterns, up to 1.5m projection.

All columns supplied with standard backboard and earthing terminal.



The APOLLO column with a Phosco P178 lantern.

Concrete Utilities Limited  
Head Office  
Great Amwell  
Ware, Herts SG12 9TA  
Tel: Ware (0920) 2272  
Telex: 81398  
ENGLAND

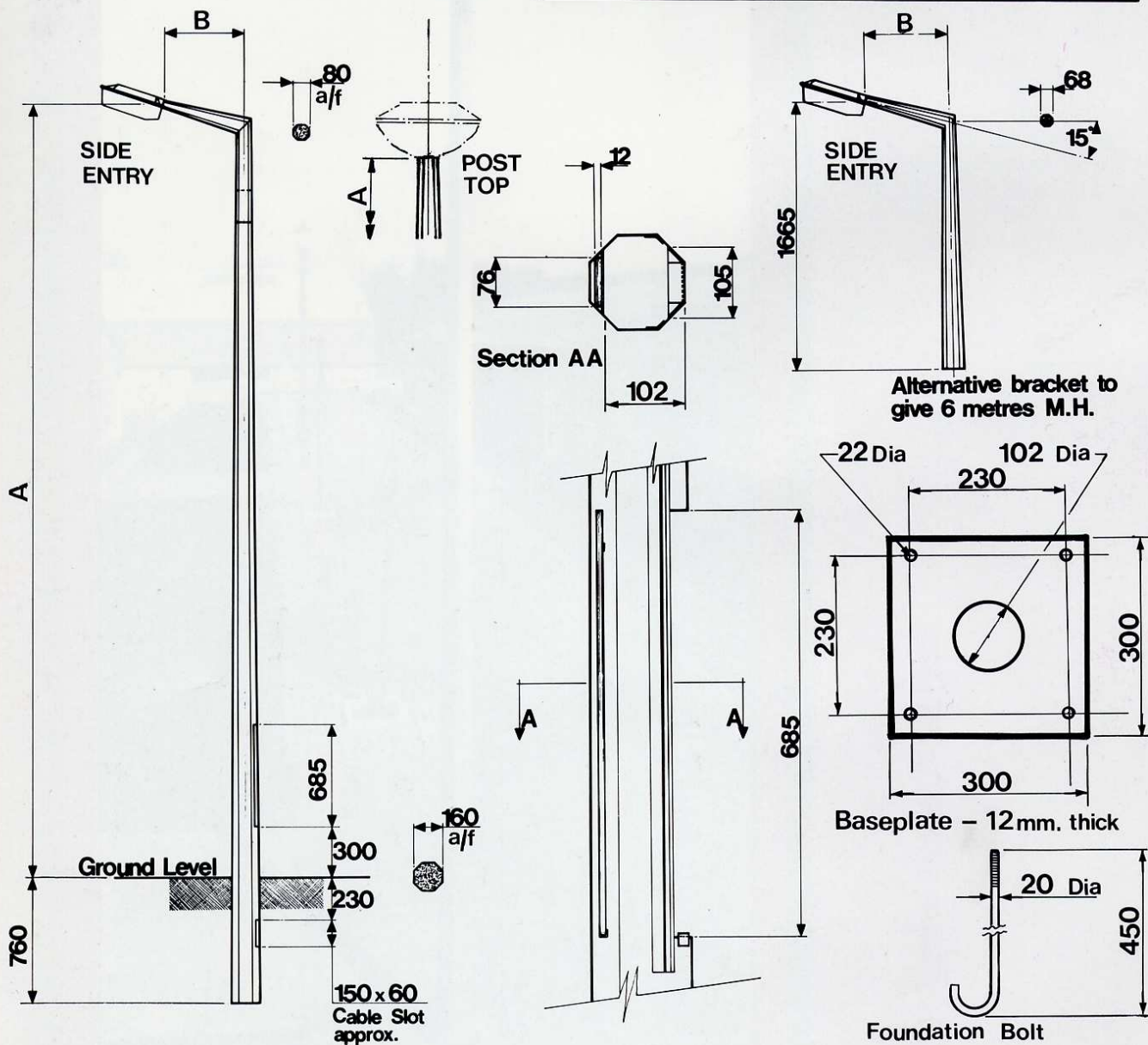
# CU

Printed by Graphic 7/85/Welwyn Garden City/Hertfordshire

# Apollo column

**5-6 metres**  
MOUNTING HEIGHT

		Column weight in Kilos inc. brkt		
Dim A	Dim B	500mm	1000mm	1500 mm
5m	500 & 1000	48	53	—
6m	500, 1000 & 1500	49	54	59
post top 4.75m	—	45 complete		



All dimensions shown in millimetres

Concrete Utilities Limited reserve the right to amend the design and/or specification without prior notice.

HEAD OFFICE  
Great Amwell  
Ware, Herts SG12 9TA  
Tel: Ware (0920) 2272  
Telex: 81398  
ENGLAND

North West Area  
Knowsley Industrial Park  
Near Liverpool L33 7UH  
Tel: 051 546 2887

South West Area  
Coleford  
Gloucestershire GL16 7EG  
Tel: Dean (0594) 33369

North East Area  
Cleckheaton  
West Yorkshire BD19 5LE  
Tel: (0274) 876887

# CUB columns

## CUB COLUMNS

These sheet steel columns are available for post top mounted lanterns or with brackets for side entry lanterns. The columns are approved by the Design Council.

## POST TOP

5.0 or 6.0 metres height to spigot; weight up to 41kg as shown overleaf.

## WITH BRACKETS

5.0 or 6.0 metres; with tubular steel bracket at 5° uplift with 42mm or 34mm diameter spigots.

Projection; 0.75m - 0.25m weight of column with bracket up to 43kg as shown overleaf.

## GENERAL

The column shaft is of one-piece construction in 8 sided sheet steel and conforms to BS 5649 (see overleaf) and BS 1840. The door is secured by a triangular headed screw lock at the top. The base compartment will accommodate max. 125 watt mercury or 55 watt SOX, or 110 watt SON gear. The finish overall is hot dip galvanised to BS 729. Bitumen coated roots are available.

Standard door sizes are shown overleaf.

Concrete Utilities Limited reserve the right to amend the design and/or specification without prior notice.



*Photograph shows a CU 5 metre CUB column with a Phosco Spherical lantern.*

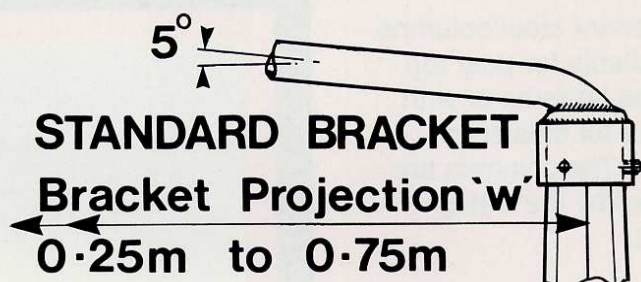
Ware, Herts. SG12 9TA  
Telephone:  
National Ware (0920) 2272  
International +44 920 2272  
Telex: 81398  
Fax: Ware 61370

# CU

*Printed by Graphic 5/86 Welwyn Garden City/Hertfordshire*

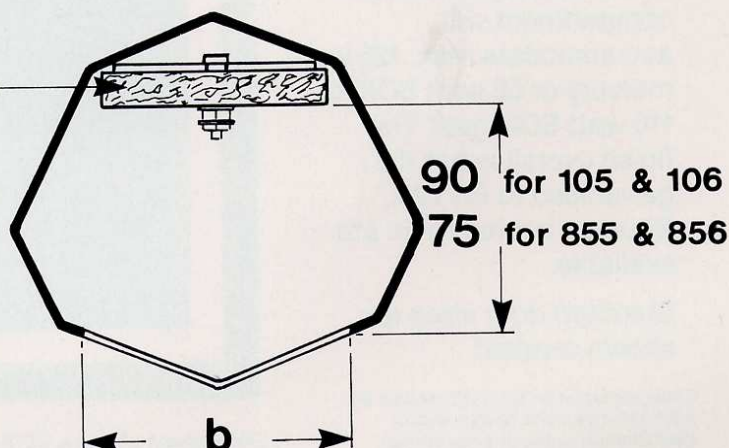
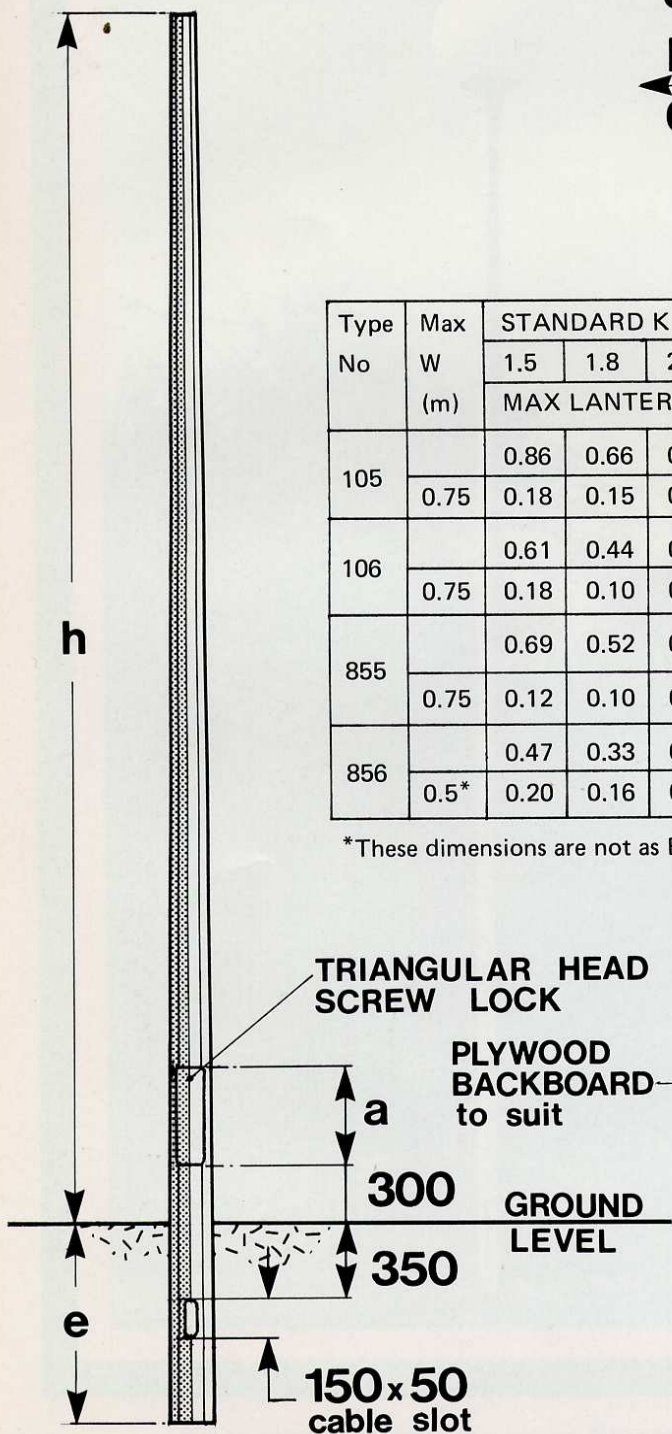
# CUB columns

5 & 6 metres  
mounting height



Type No	Max W (m)	STANDARD K VALUES					WEIGHT KG		h (m)	a (mm)	b (mm)	e (mm)
		1.5	1.8	2.2	2.5	3.0						
		MAX LANTERN AREA (m <sup>2</sup> )										
105		0.86	0.66	0.47	0.38	0.26	35	Post Top	5	500	100	800
	0.75	0.18	0.15	0.12	0.07	—	37	Single Arm				
106		0.61	0.44	0.29	0.22	0.12	41	Post Top	6	500	100	1000
	0.75	0.18	0.10	0.04	—	—	43	Single Arm				
855		0.69	0.52	0.37	0.29	0.19	32	Post Top	5	300 or 500*	85	800
	0.75	0.12	0.10	0.08	0.07	0.05	34	Single Arm				
856		0.47	0.33	0.20	0.13	0.06	38	Post Top	6	300	85	1000
	0.5*	0.20	0.16	0.13	0.05	—	40	Single Arm				

\*These dimensions are not as BS 5649 Part 2.



North West Area  
Knowsley Industrial Park  
Near Liverpool L33 7UH  
Tel: 051 546 2887

South West Area  
Coleford  
Gloucestershire GL16 7EG  
Tel: Dean (0594) 33369

Ware, Herts. SG12 9TA  
Telephone:  
National Ware (0920) 2272  
International +44 920 2272  
Telex: 81398  
Fax: Ware 61370

**CU**

# 8~10~12~14 metres Flood Poles

Based on the International column. To accommodate up to four 400W or two 1000W, SON/T or MBI floodlights with control gear in column base. Also suitable for Tungsten Halogen fittings.

C.U. F.P. Flood Poles are fabricated from tapering octagonal steel welded sections finished hot dip galvanised. The brackets have a central fixing point for the floodlights allowing 360° rotation in azimuth, each floodlight being finally clamped by Lindapters. All columns are supplied with backboard and earthing terminal.

Flood Poles are designed to accommodate all control gear in the base compartment. FP Series have a standard gear compartment FPW Series have a wide gear compartment.

Options: — Rooted or flanged bases.

Options: — Ladder steps and safety hoop.



Concrete Utilities Limited reserve the right to amend the design and/or specification without prior notice.

**CU Limited**  
Charles House,  
Great Amwell,  
Ware, Herts SG12 9TA  
Tel: (0920) 462272  
Telex: 81398  
Fax: (0920) 461370

# CU

Printed by Graphic 11/86 Welwyn Garden City/Hertfordshire

# 8 - 10 - 12 - 14 metres Flood Poles



Photograph shows C.U. 10 metre FPW series Flood Poles with 4 Phosco FL 300 floodlights on each at Tattersalls, Newmarket.

Catalogue No.	Accommodating FL300   FL310		Catalogue No.	Accommodating FL300   FL310	
FP81	1	-	FP121	1	-
FP82	2	-	FP122	2	-
FPW81	-	1	FPW121	-	1
FPW82	-	2	FPW122	-	2
FPW83	3	-	FPW123	3	-
FPW83	2	1	FPW123	2	1
FPW84	4	-	FPW124	4	-
FP101	1	-	FP141	1	-
FP102	2	-	FP142	2	-
FPW101	-	1	FPW141	-	1
FPW102	-	2	FPW142	-	2
FPW103	3	-	FPW143	3	-
FPW103	2	1	FPW143	2	1
FPW104	4	-	FPW144	4	-

**KEY:—**

FP — Floodlight Pole.

W — Wide base compartment to accommodate up to 4 sets of appropriate control gear.

8/10/12/14 — Mounting height.

Last digit — No. of fittings.

C.U. Flood Poles are designed specifically for the Phosco range of floodlights. Although Flood Poles will accommodate floodlights from other manufacturers, fixings and clearances should be checked for compatibility. Likewise compartment sizes should be checked when using non-standard gear.

HEAD OFFICE  
Great Amwell  
Ware, Herts SG12 9TA  
Tel: Ware (0920) 2272  
Telex: 81398  
ENGLAND

North West Area  
Knowsley Industrial Park  
Near Liverpool L33 7UH  
Tel: 051 546 2887

South West Area  
Coleford  
Gloucestershire GL16 7EG  
Tel: Dean (0594) 33369

North East Area  
Cleckheaton  
West Yorkshire BD19 5LE  
Tel: (0274) 876887