

# **TUBULAR STEEL COLUMNS**

Lighting Columns up to 15  
metres.





**TT**

TAPERED TUBULAR  
**C O L U M N S**





# SPECIFICATION

The concept of tapered tubular one piece columns is particularly suited to specifiers of quality architectural exterior lighting.

The tapered design T T has a most attractive appearance in any surrounding. Tapered columns are particularly suitable for schemes requiring a modern well designed column to complement a lantern. Appearance however is only one of its advantages. The CU tapered circular column section is the most efficient aerodynamic shape available having the lowest shape coefficient specified in BS 5649.

Production of the T T columns is carried out in our Corby factory which is equipped with the most advanced C.N.C. controlled column production equipment available. This has been installed to enable us to offer products of the highest quality and design specification. The factory is quality assured to BS 5750 Pt. 2.

The column shaft itself is manufactured in one piece, without lateral welds or joints, by a hot flow-forming process. This method ensures a stress-free product with perfect concentricity. The one piece construction of columns in the TT range means that corrosion at the internal step is a thing of the past.

The columns are trimmed to exact length, and doors and cable entry slots are produced on an automatic cutting line. Columns are also automatically drilled for bracket fixing. Positional accuracy throughout this process is ensured by the use of a robot transfer mechanism.

Columns can be supplied for post top lanterns or with brackets. Bracket projections supplied as standard range between 0.3m and 3.0m, single and double arm (to BS 5649). Anti-rotation protection is included to fix arm at 90° intervals to the door in brackets of 750 mm projection and over.

## Surface Protection

Hot dipped galvanised to BS 729 with additional treatment if required consisting of:

- (a) 'T' Wash to outer surface.
- (b) Bitumen coating to root.

## Base Compartment Accommodation

Guide to maximum lantern control gear that typically can be housed within TT columns - normal cut out allowed for.

Backboards as door dimensions.

Door Size mm	Available Depth mm	Control Gear Rating
300 x 85	121	Cut-out only
500 x 85	55	Up to 125W MBF Up to 55W SOX Up to 120W SON
500 x 100	78	Up to 400W MBI or MBF Up to 135W SOX Up to 250W SON
600 x 115	100	Up to 400w SON Up to Twin 250W SON Up to Twin 180W SOX Up to Twin 400W MBI or MBF

## Doors

Overlapping doors to IP33 are standard. They are fixed by a triangular headed lock. A stainless steel M8 earth terminal is supplied in the base compartment and a substantial non-hygroscopic backboard is fitted.



FM1884



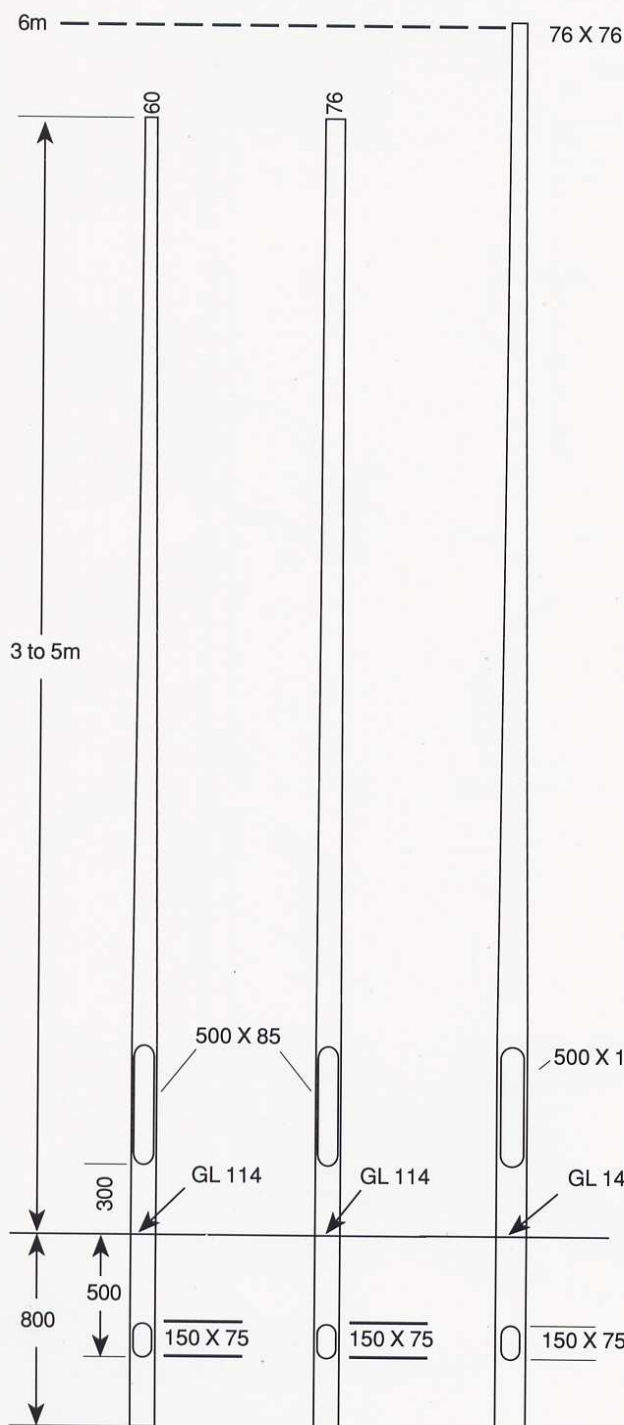
# ARCHITECTURAL POST TOP COLUMNS 3 TO 6M

## Column Ref:

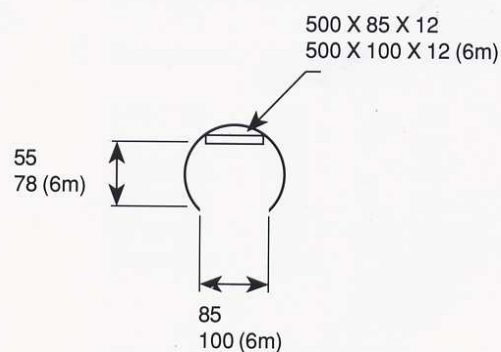
60mm Spigot: 3m TT303061  
 3.5m TT3X3061  
 4m TT304061  
 5m TT305061

76mm Spigot: 3.5m TT3X3075  
 4m TT304075  
 5m TT305001  
 6m TT506075

To specify flangeplate versions amend catalogue prefix to TC.

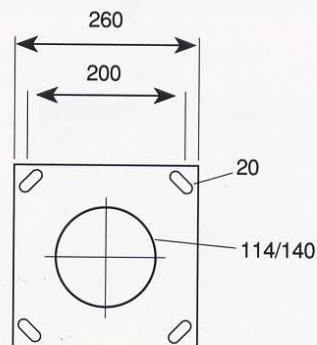


## TYPICAL SECTION THROUGH BASE COMPARTMENT



## DETAIL OF FLANGEPLATE Column Prefix TC

Foundation Bolts  
 Size/Part no:  
 M16/J045250



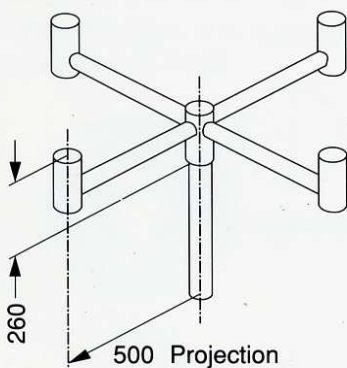
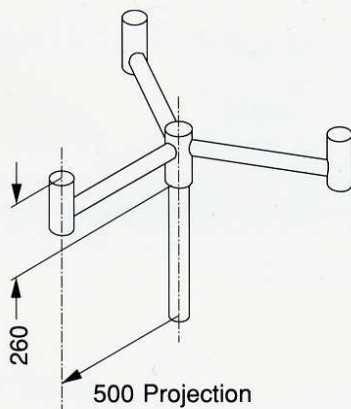
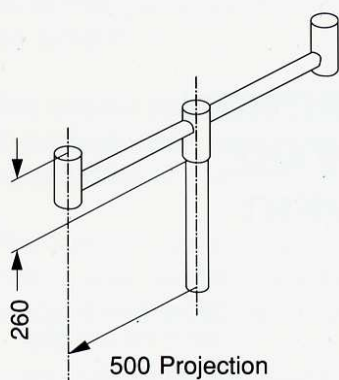
All dimensions are in mm unless otherwise stated.



# DECORATIVE STEEL BRACKETS

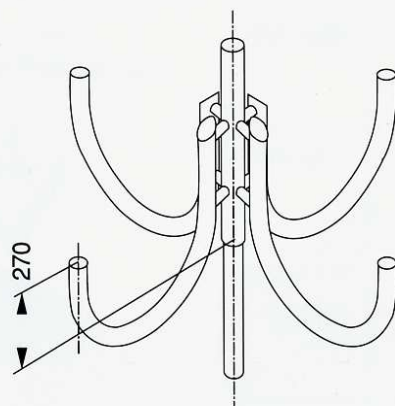
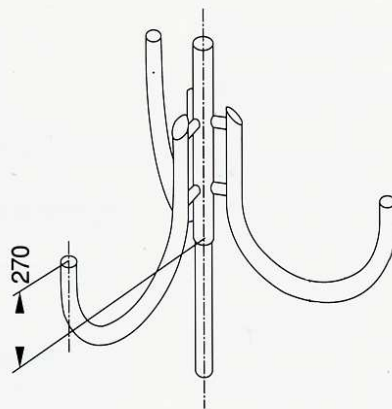
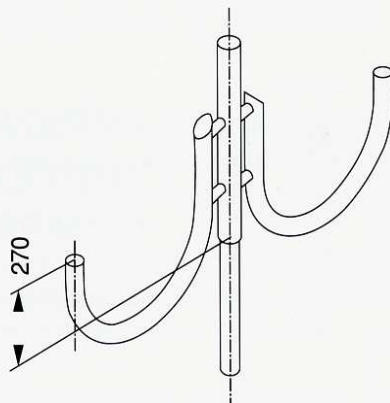
## US SERIES

Lantern fixing 76 x 76 spigot.



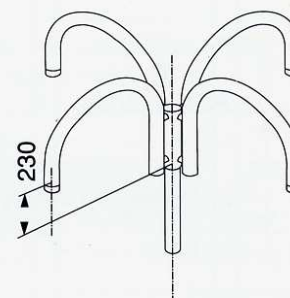
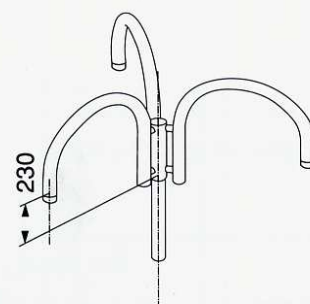
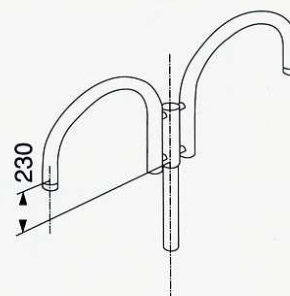
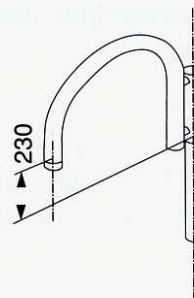
## UU SERIES

Lantern fixing to order for 60 O/D tube.



## TE SERIES

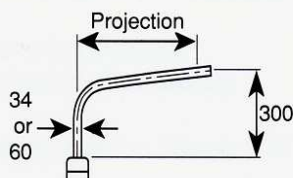
Lantern fixing 2" BSP thread 60 O/D tube.



All dimensions in mm unless otherwise stated.

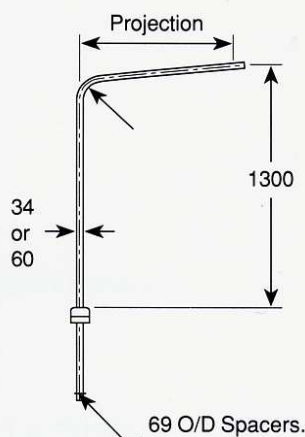
# 5M COLUMN & SIDE ENTRY BRACKETS

Type E Brackets are suitable for 5m & 6m Post Top Columns.  
Type C Brackets are suitable for 5m, 6m, 8m and 10m Columns.



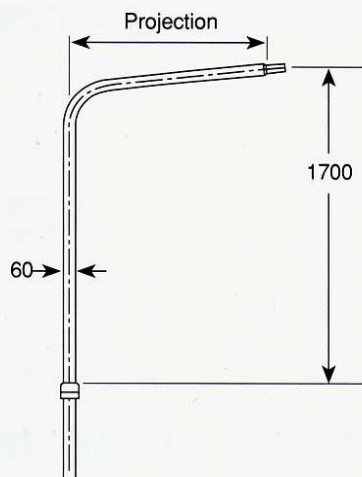
## Type E Brackets

Reference	Projection	Diameter
B406501	300	34
B410501	500	34
B415501	750	34
B706501	300	60
B710501	500	60
B715501	750	60



## Type C Brackets for 5m Column giving 6m mounting height.

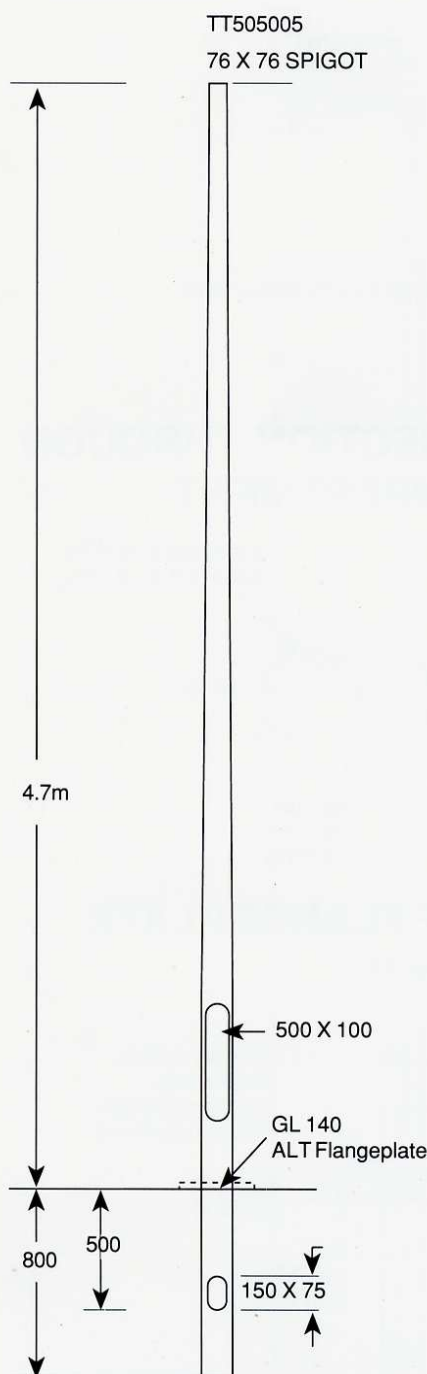
Reference	Projection	Diameter
B406133	300	34
B410133	500	34
B706133	300	60
B710133	500	60
B715133	750	60
B720133	1000	60



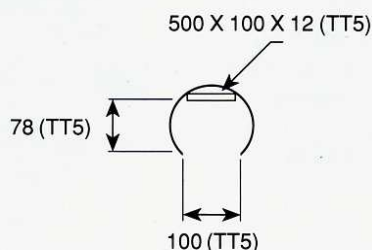
## Single Arm Type C Brackets For Columns on pages 5 & 6.

Reference	Projection
B710135	500
B715135	750
B720135	1000
B725135	1250
B730135	1500
B740135	2000

Double arm brackets available up to 2m span.

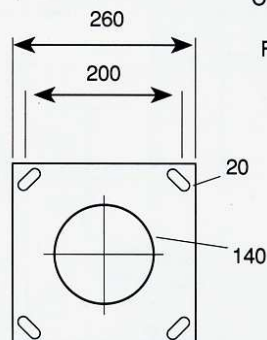


## TYPICAL SECTION THROUGH BASE COMPARTMENT.



## DETAIL OF FLANGEPLATE

Column Prefix TC



Foundation Bolts  
Size/Part No:  
M16/J045250

All dimensions in mm unless otherwise stated.

# TT COLUMN 8M & 10M

The standard 6.3m P.T. column becomes 8m with bracket.  
The standard 8.3m P.T. column becomes 10m with bracket.

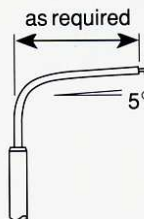
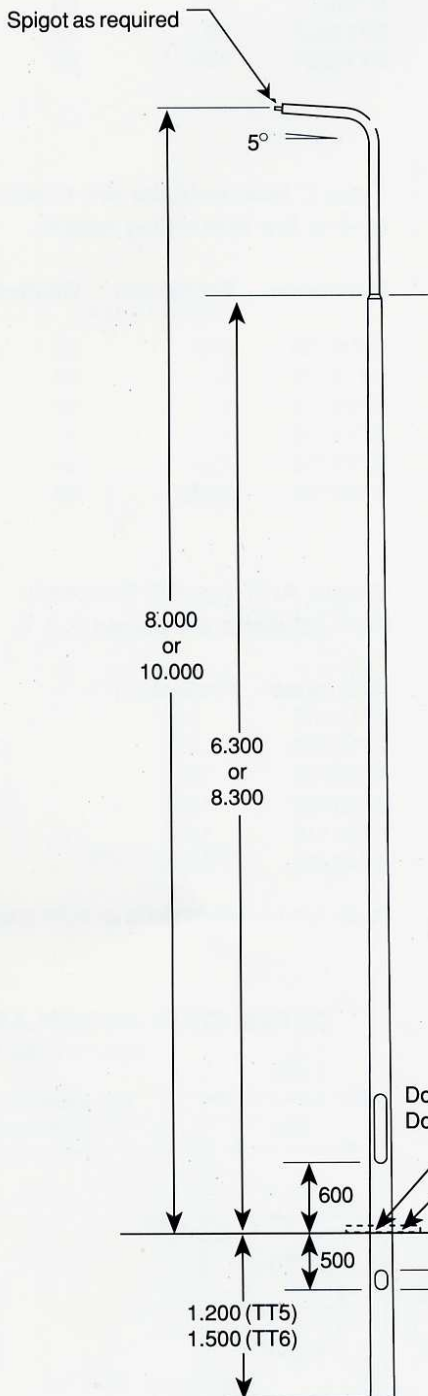
## Column Ref:

6.3m TT508009 Rooted  
TC508009 Flangeplate

Rooted Column Weight 81kg

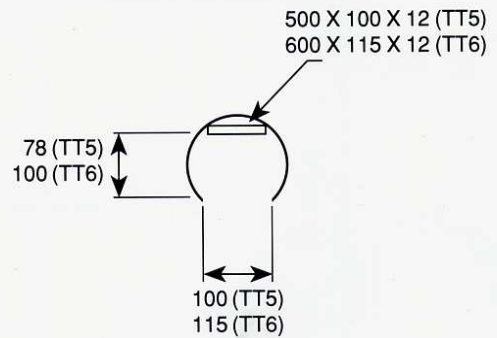
8.3m TT610013 Rooted  
TC610013 Flangeplate

Rooted Column Weight 152.8kg

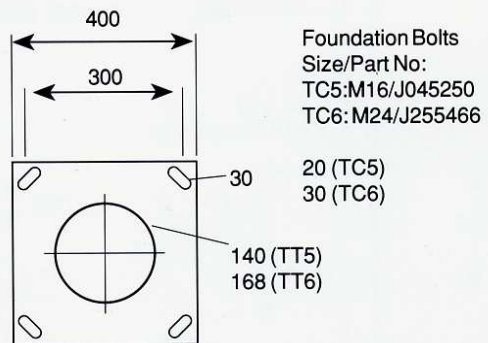


Separate Brackets up to 2m projection.

## TYPICAL SECTION THROUGH BASE COMPARTMENT



## DETAIL OF FLANGEPLATE Column Prefix TC



All dimensions in mm unless otherwise stated.

# TT COLUMN 10M & 12M

The standard 10.3m P.T. column becomes 12m with bracket.

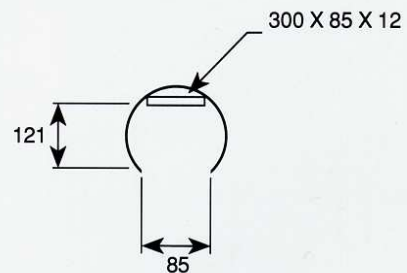
## Column Ref:

TT612001 Rooted  
TC612001 Flangeplate

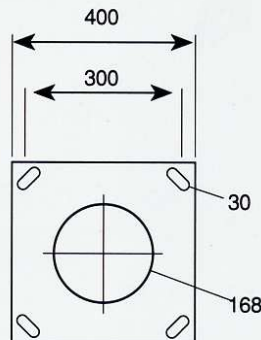
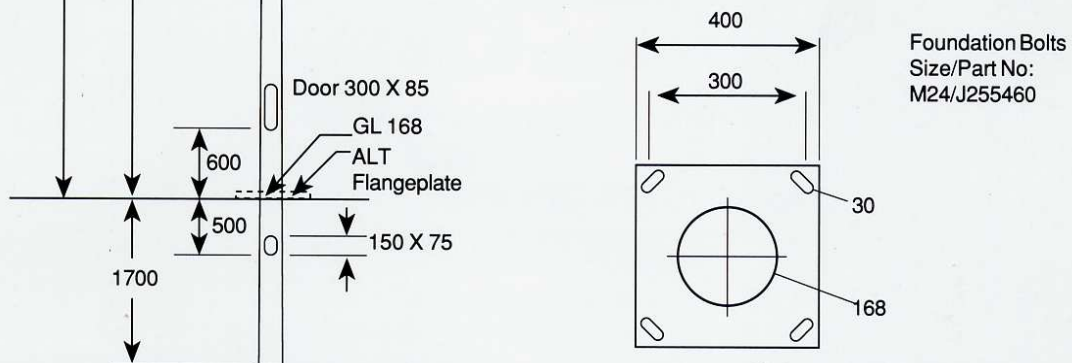
Rooted Column Weight 187kg



## TYPICAL SECTION THROUGH BASE COMPARTMENT



## DETAIL OF FLANGEPLATE Column Prefix TC



Foundation Bolts  
Size/Part No:  
M24/J255460

All dimensions in mm unless otherwise stated.



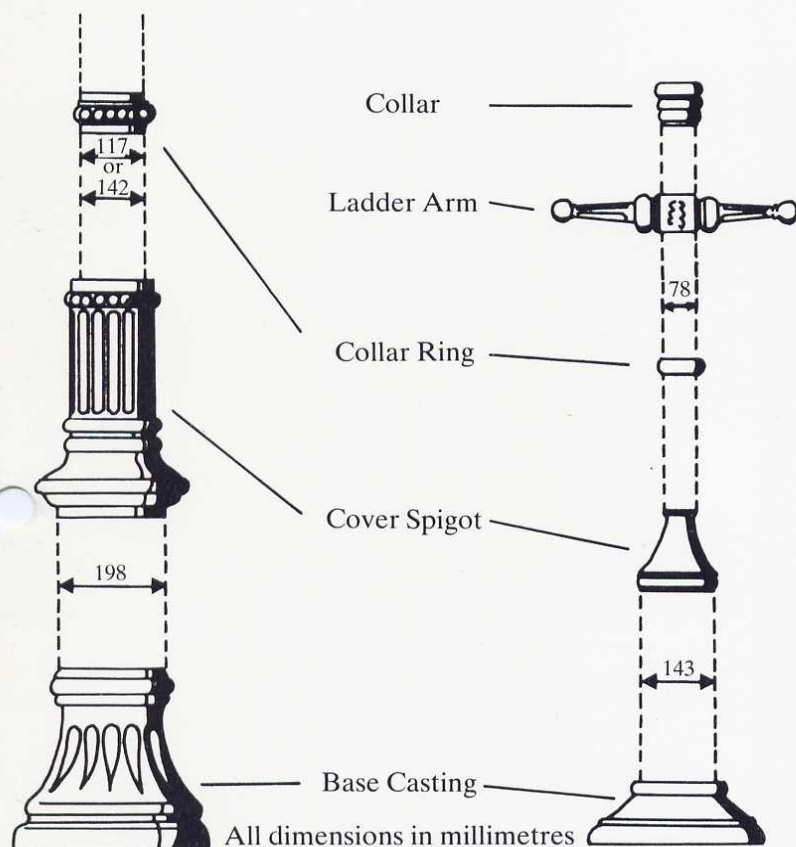
# CU Cast Conversion Kits

CU cast conversion kits provide an economical method of converting plain tubular steel columns into decorative traditional lamp-posts.

These kits can be supplied with new columns or to fit posts already erected.

The Promenade fits 5 and 6m columns.

The Boulevard is available in a variety of different sizes to fit 8, 10 and 12m columns.



## BOULEVARD

Group A 8m, 10m and 12m  
For 194/140mm columns  
or 194/114mm columns  
other sizes available

## PROMENADE

Group B 5m and 6m  
For 140/76mm columns



CU Promenade column with Phosco P514 Albert Square lantern.





Products offered for sale may differ from those described in this brochure due to changes in design and manufacture. The company reserves the right to alter specifications without notice.



**CU PHOSCO LIMITED**

Charles House, Great Amwell, Ware, Herts SG12 9TA

Tel Ware: 0920 462272 Tel International: + 44 920 462272 Fax: 0920 461370 Tlx: 81398